

Final Report

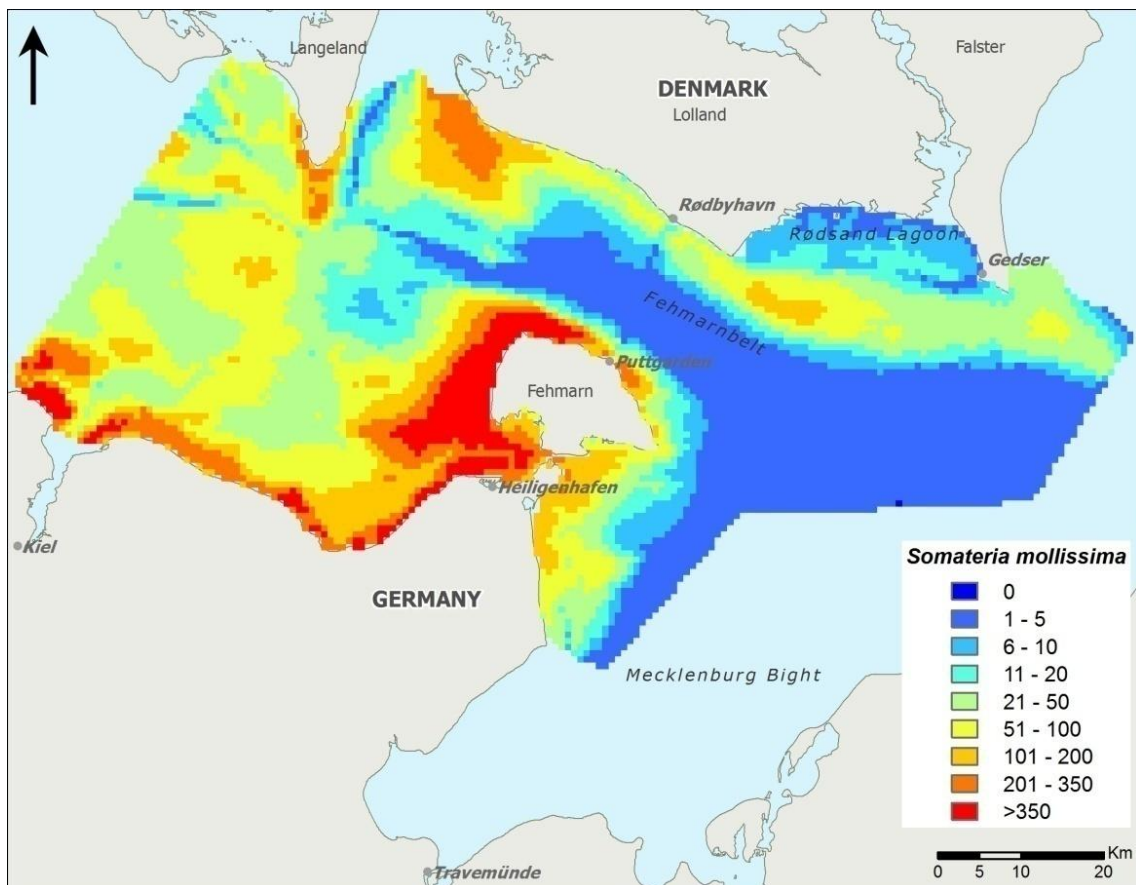
**FEHMARNBELT FIXED LINK
BIRD SERVICES (FEBI)**

Bird Investigations in Fehmarnbelt - Baseline

Waterbirds in Fehmarnbelt

E3TR0011 Volume II – Appendix II, Part IV

Maps of ship-based surveys in 2010



Responsible editor:

FEBI consortium / co DHI
Agern Allé 5
DK-2970 Hørsholm
Denmark

FEBI Project Director: Anders Malmgren Hansen, DHI
www.dhigroup.com

Please cite as:

FEBI (2013). Fehmarnbelt Fixed Link EIA.
Bird Investigations in Fehmarnbelt – Baseline.
Volume II. Waterbirds in Fehmarnbelt.
Report No. E3TR0011
Appendix II, Part IV: Maps of ship-based surveys in 2010.

Appendix: 44 pages

(Main Report: ISBN 978-87-92416-51-3)

May 2013

ISBN 978-87-92416-80-3

Maps:

Unless otherwise stated:

DDO Orthofoto: DDO®, copyright COWI

Geodatastyrelsen (formerly Kort- og Matrikelstyrelsen), Kort10 and 25 Matrikelkort

GEUS (De Nationale Geologiske Undersøgelser for Danmark og Grønland)

HELCOM (Helsinki Commission – Baltic Marine Environment Protection Commission)

Landesamt für Vermessung und Geoinformation Schleswig-Holstein (formerly

Landesvermessungsamt Schleswig-Holstein) GeoBasis-DE/LVermGeo SH

© Femern A/S 2013

All rights reserved.

The sole responsibility of this publication lies with the author. The European Union is not responsible for any use that may be made of the information contained therein.



FEHMARNBELT BIRDS

CONTENTS

1	APPENDIX II - WATERBIRDS IN THE FEHMARNBELT – MAPS	1
1.1	Ship-based Surveys in 2010.....	1
1.1.1	Red-throated Diver / Black-throated Diver / Unidentified Divers – <i>Gavia stellata</i> / <i>Gavia arctica</i> / <i>Gavia</i> sp.....	1
1.1.2	Great Crested Grebe / Red-necked Grebe / Unidentified Grebes – <i>Podiceps cristatus</i> / <i>Podiceps grisegna</i> / <i>Podiceps</i> sp.	4
1.1.3	Great Cormorant – <i>Phalacrocorax carbo</i>	8
1.1.4	Common Goldeneye / Greater Scaup / Tufted Duck – <i>Bucephala clangula</i> / <i>Aythya</i> <i>marila</i> / <i>Aythya fuligula</i>	14
1.1.5	Common Eider – <i>Somateria mollissima</i>	17
1.1.6	Long-tailed Duck – <i>Clangula hyemalis</i>	22
1.1.7	Velvet Scoter / Common Scoter – <i>Melanitta fusca</i> / <i>Melanitta nigra</i>	25
1.1.8	Red-breasted Merganser / Goosander – <i>Mergus serrator</i> / <i>Mergus merganser</i>	30
1.1.9	Black-headed Gull / Little Gull – <i>Larus ridibundus</i> / <i>Larus minutus</i>	34
1.1.10	Great Black-backed Gull / Common Gull / Herring Gull – <i>Larus marinus</i> / <i>Larus</i> <i>canus</i> / <i>Larus argentatus</i>	36
1.1.11	Razorbill/ Black Guillemot – <i>Alca torda</i> / <i>Cephus grylle</i>	42

List of figures is included as the final pages

FEHMARNBELT BIRDS

Note to the reader:

In this report the time for start of construction is artificially set to 1 October 2014 for the tunnel and 1 January 2015 for the bridge alternative. In the Danish EIA (VVM) and the German EIA (UVS/LBP) absolute year references are not used. Instead the time references are relative to start of construction works. In the VVM the same time reference is used for tunnel and bridge, i.e. year 0 corresponds to 2014/start of tunnel construction; year 1 corresponds to 2015/start of bridge construction etc. In the UVS/LBP individual time references are used for tunnel and bridge, i.e. for tunnel construction year 1 is equivalent to 2014 (construction starts 1 October in year 1) and for bridge construction year 1 is equivalent to 2015 (construction starts 1st January).

1 APPENDIX II - WATERBIRDS IN THE FEHMARNBELT – MAPS

1.1 Ship-based Surveys in 2010

1.1.1 Red-throated Diver / Black-throated Diver / Unidentified Divers – *Gavia stellata* / *Gavia arctica* / *Gavia* sp.

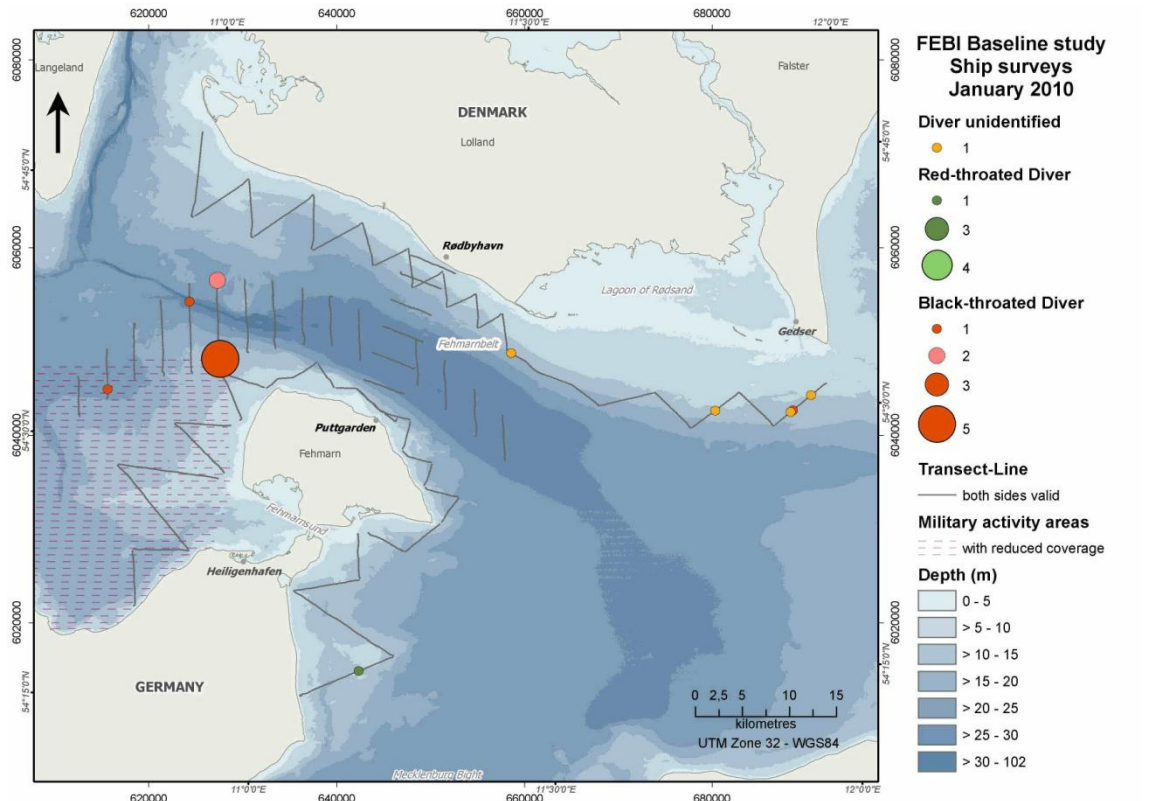


Figure 1.1 Red-throated Diver, Black-throated Diver and unidentified diver (*Gavia* sp.) distribution in the study area during ship-based surveys (January 2010).

FEHMARNBELT BIRDS

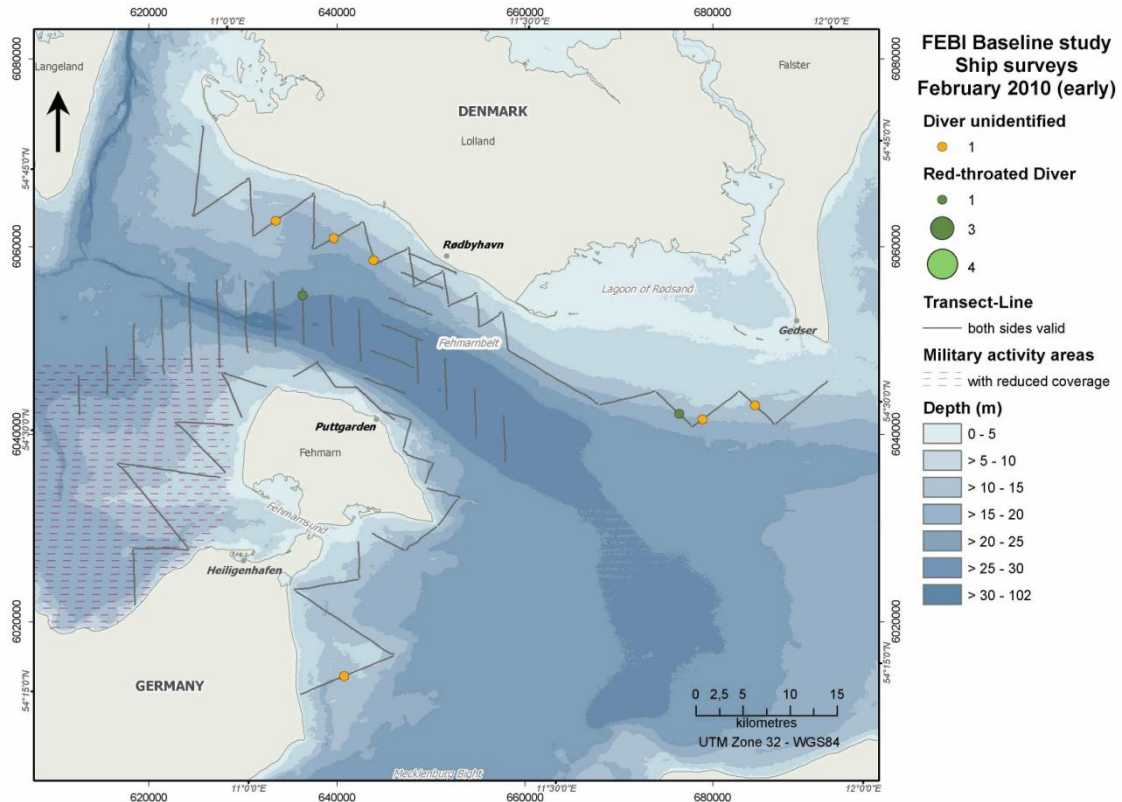


Figure 1.2 Red-throated Diver and unidentified diver (*Gavia* sp.) distribution in the study area during ship-based surveys (February 2010).

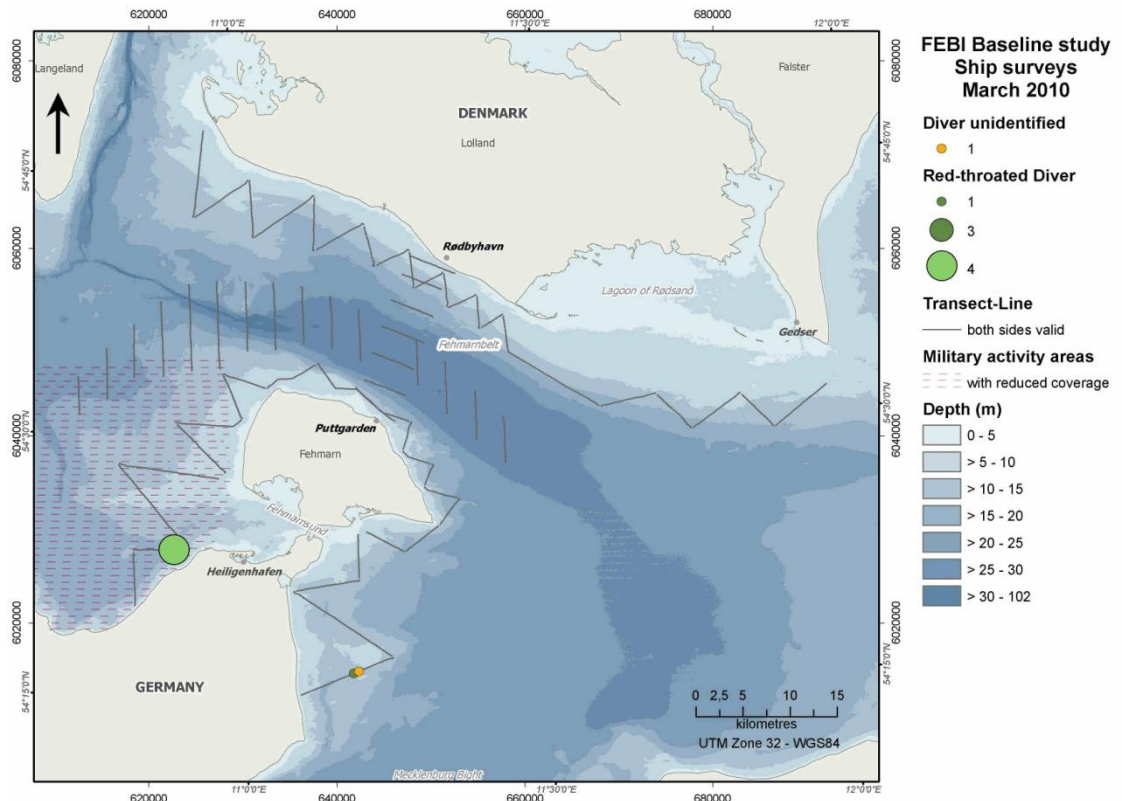


Figure 1.3 Red-throated Diver and unidentified diver (*Gavia* sp.) distribution in the study area during ship-based surveys (March 2010).

FEHMARNBELT BIRDS

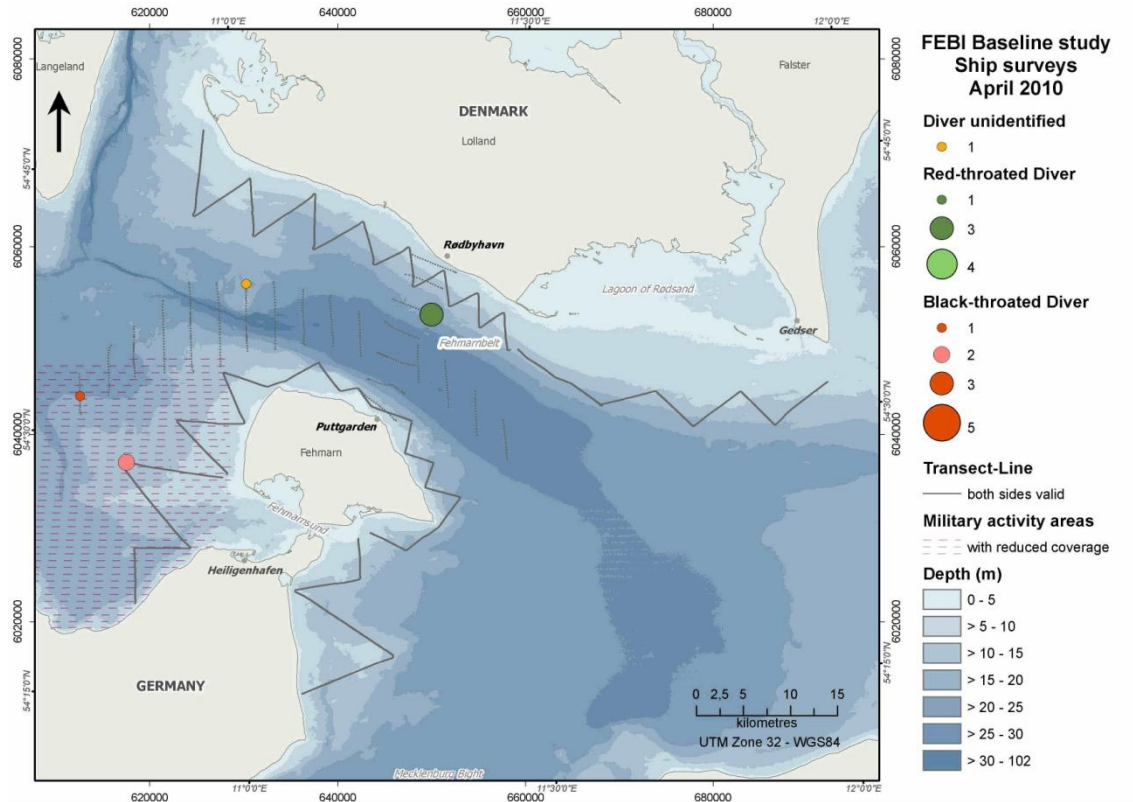


Figure 1.4 Red-throated Diver, Black-throated Diver and unidentified diver (*Gavia* sp.) distribution in the study area during ship-based surveys (April 2010).

1.1.2 **Great Crested Grebe / Red-necked Grebe / Unidentified Grebes – Podiceps cristatus / Podiceps grisegna / Podiceps sp.**

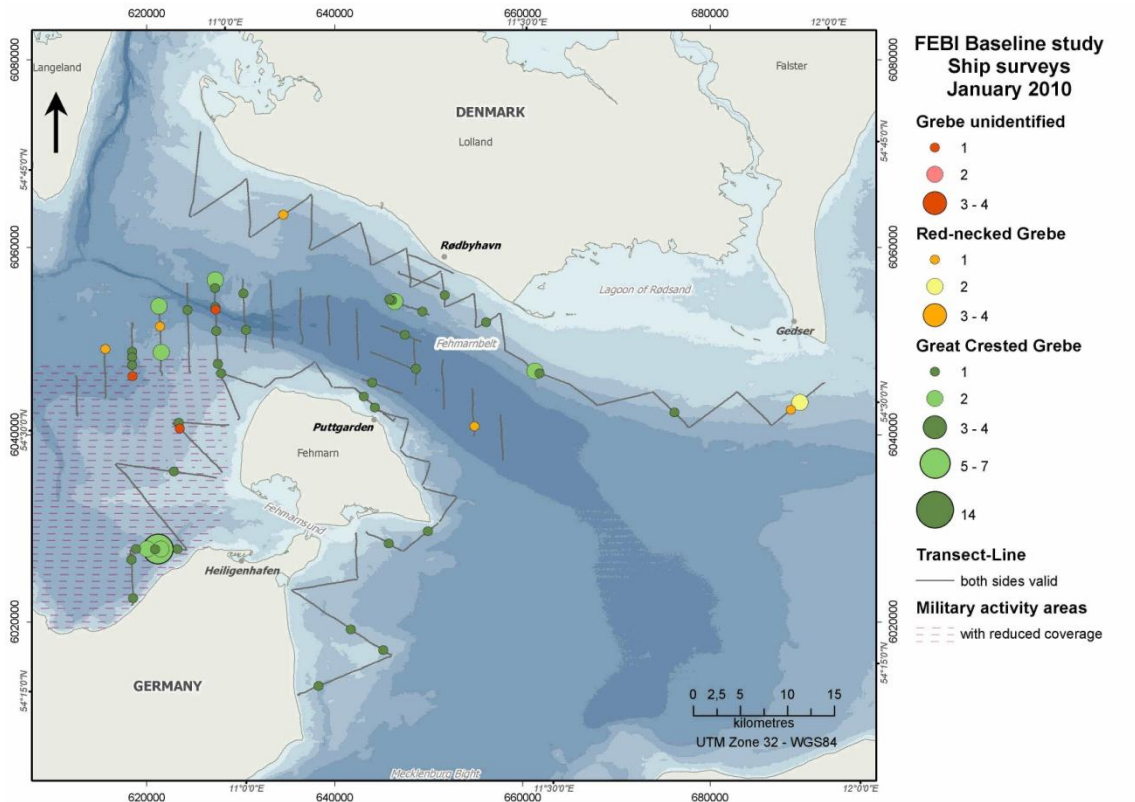


Figure 1.5 Great Crested Grebe, Red-necked Grebe and unidentified Grebe (Podiceps sp.) distribution in the study area during ship-based surveys (January 2010).

FEHMARNBELT BIRDS

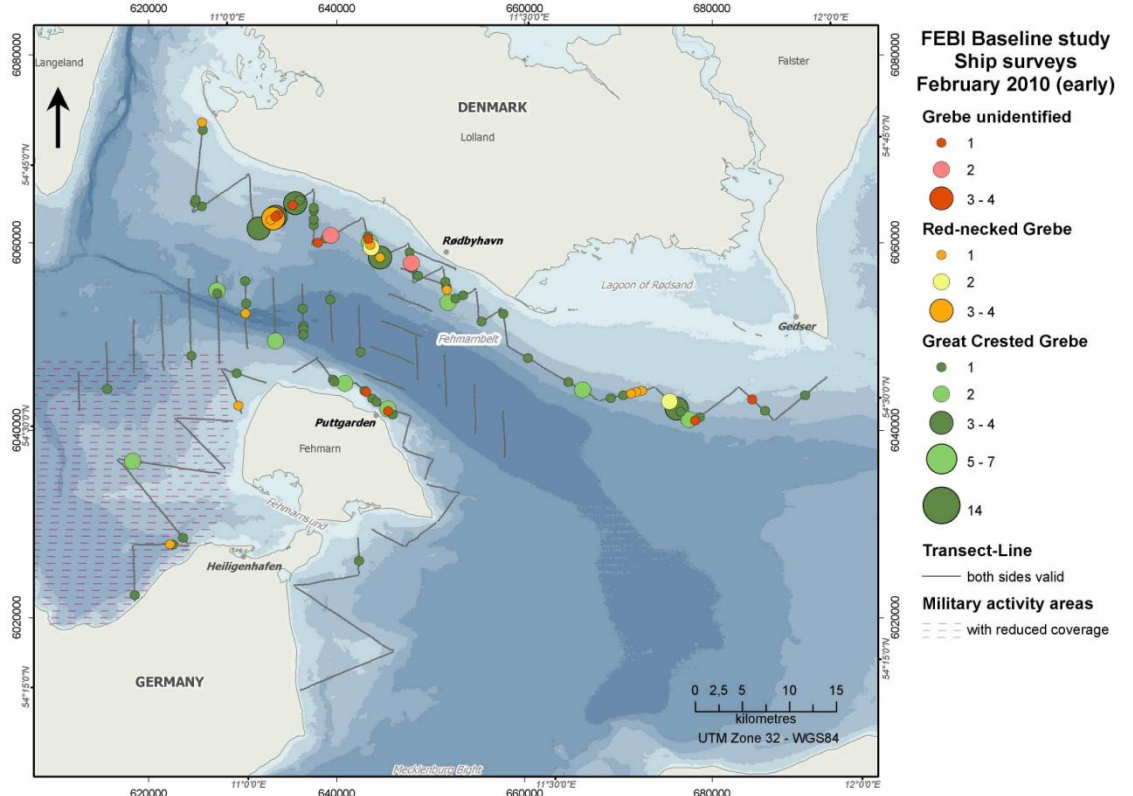


Figure 1.6 Great Crested Grebe, Red-necked Grebe and unidentified Grebe (*Podiceps* sp.) distribution in the study area during ship-based surveys (February 2010).

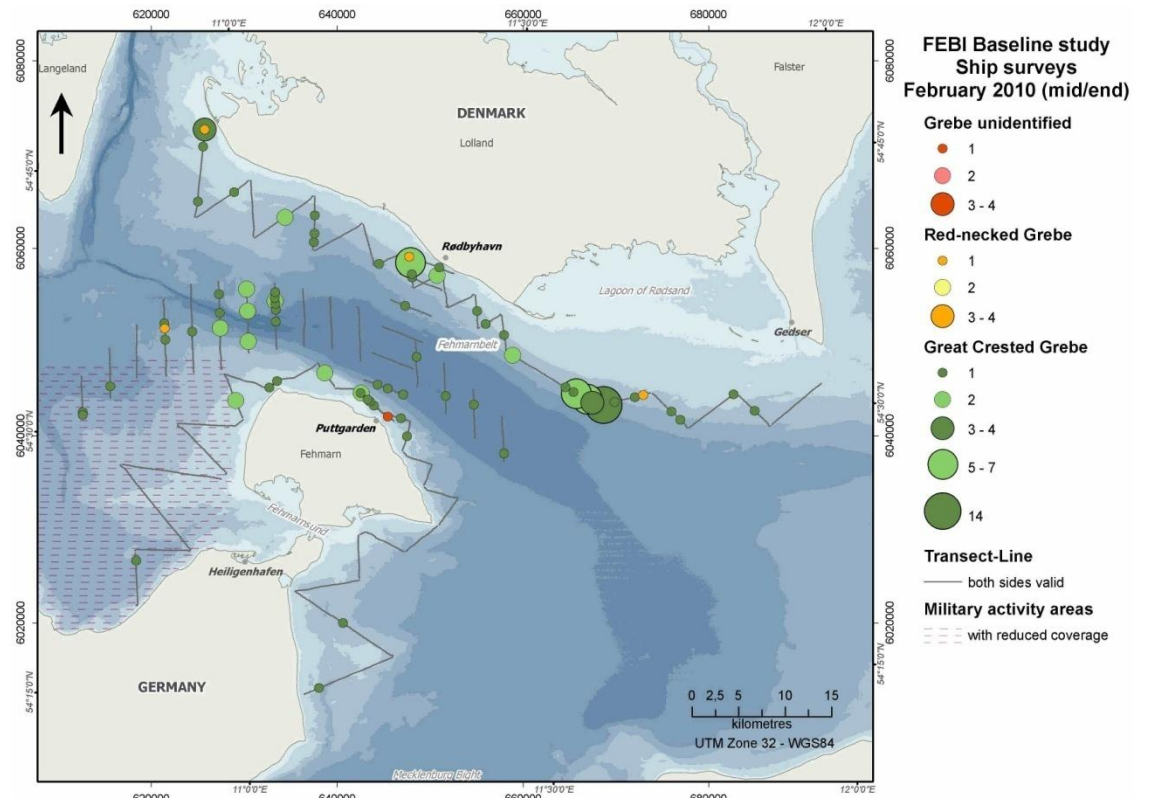


Figure 1.7 Great Crested Grebe, Red-necked Grebe and unidentified Grebe (*Podiceps* sp.) distribution in the study area during ship-based surveys (February 2010).

FEHMARNBELT BIRDS

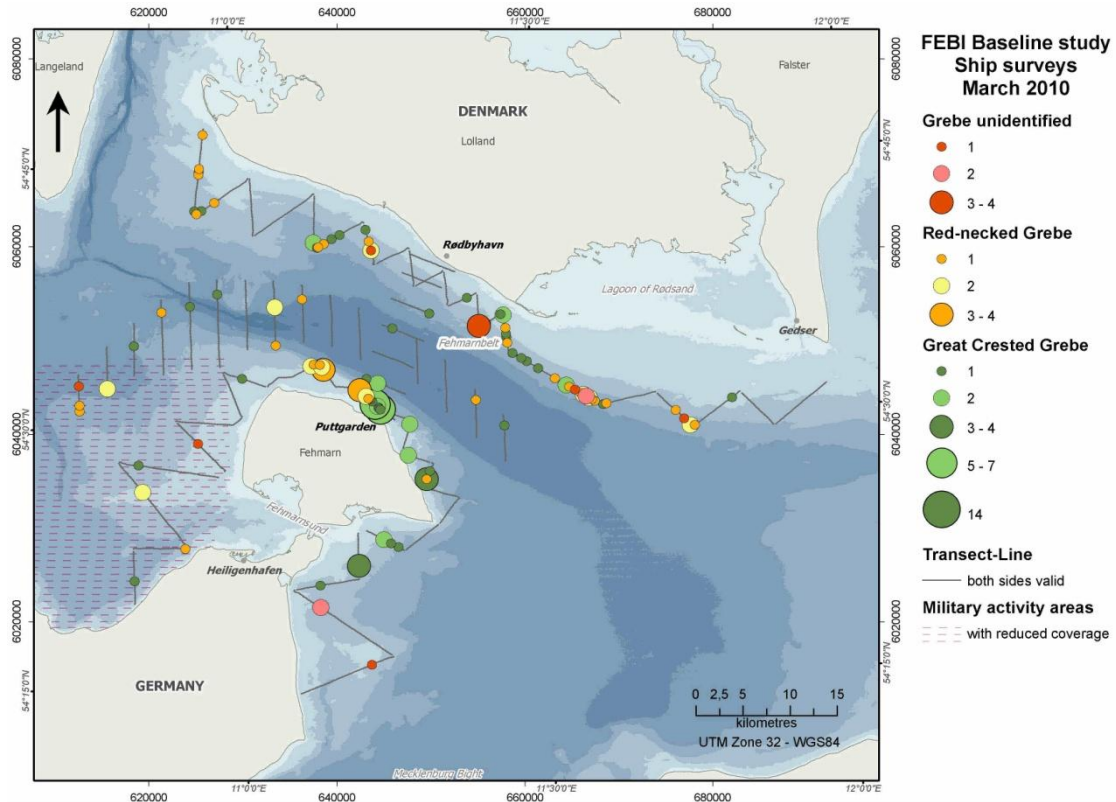


Figure 1.8 Great Crested Grebe, Red-necked Grebe and unidentified Grebe (*Podiceps* sp.) distribution in the study area during ship-based surveys (March 2010).

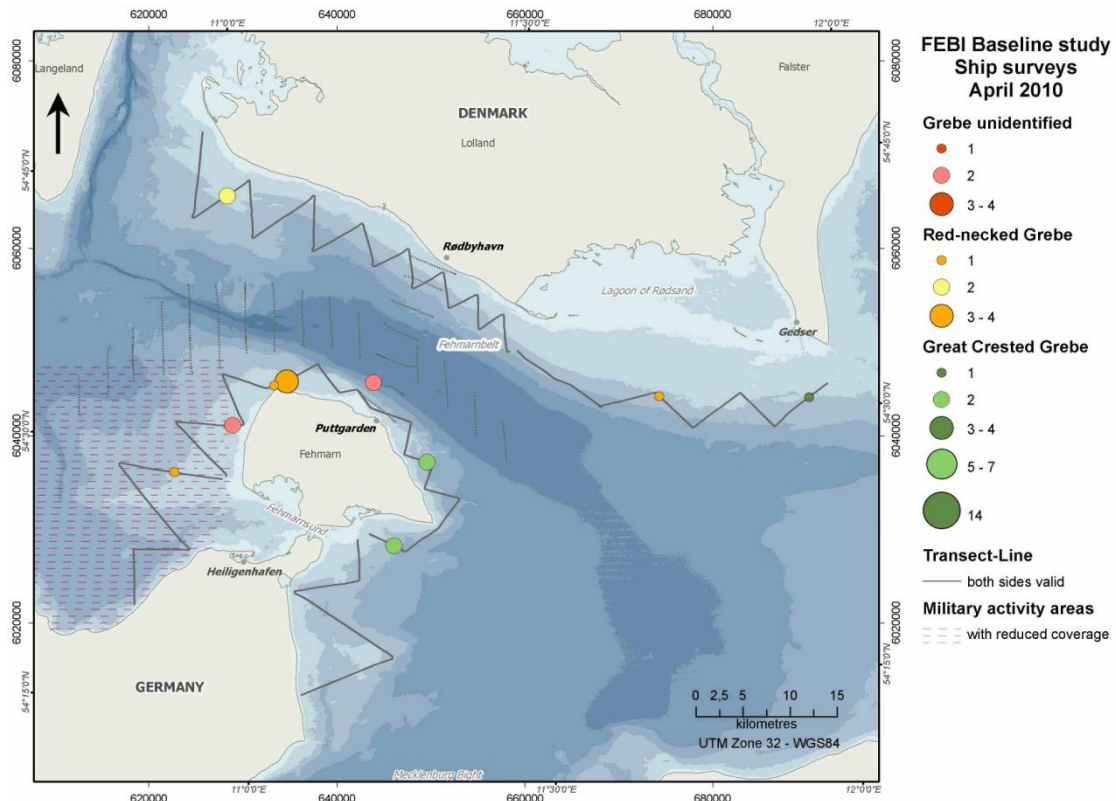


Figure 1.9 Great Crested Grebe, Red-necked Grebe and unidentified Grebe (*Podiceps* sp.) distribution in the study area during ship-based surveys (April 2010).

FEHMARNBELT BIRDS

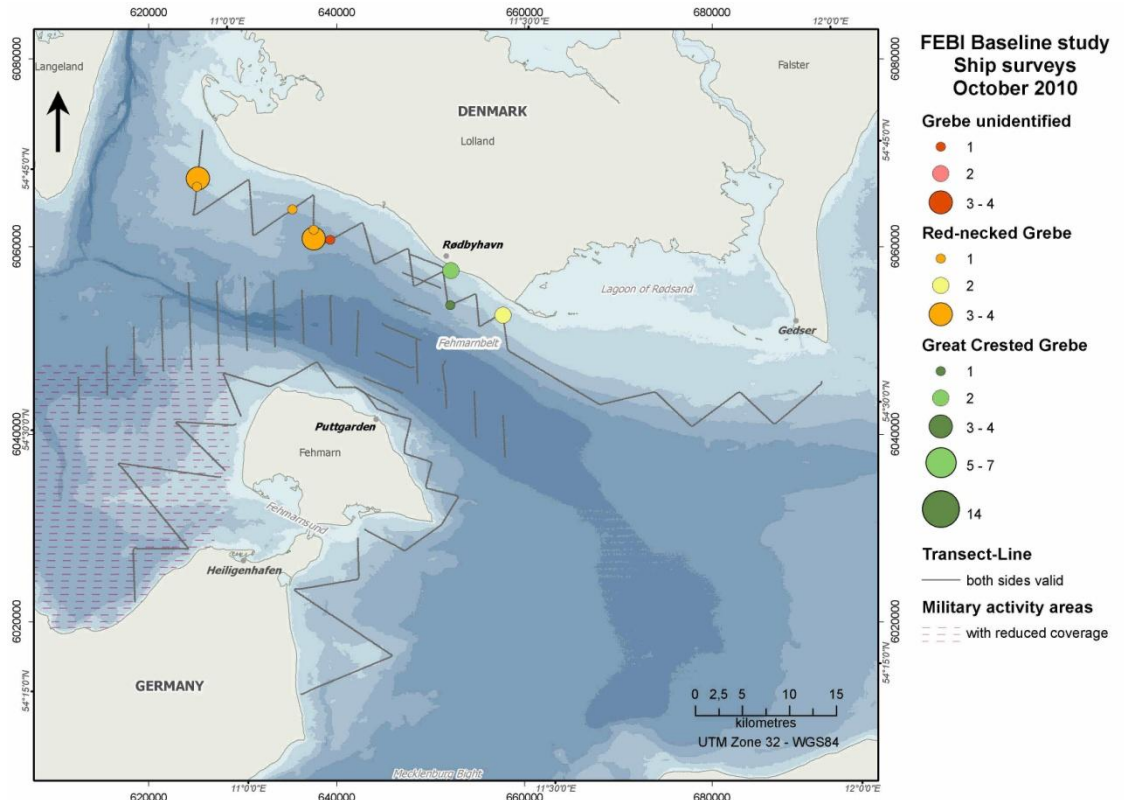


Figure 1.10 Great Crested Grebe, Red-necked Grebe and unidentified Grebe (*Podiceps* sp.) distribution in the study area during ship-based surveys (October 2010).

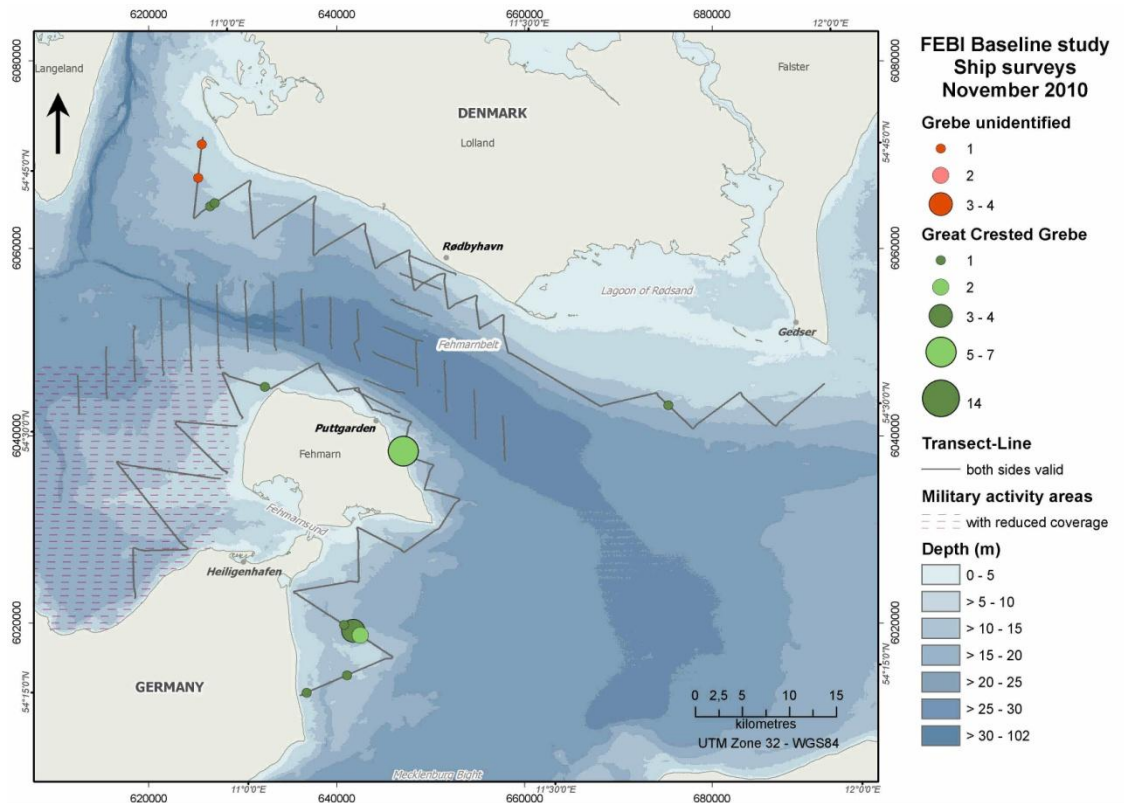


Figure 1.11 Great Crested Grebe and unidentified Grebe (*Podiceps* sp.) distribution in the study area during ship-based surveys (November 2010).

1.1.3 Great Cormorant – *Phalacrocorax carbo*

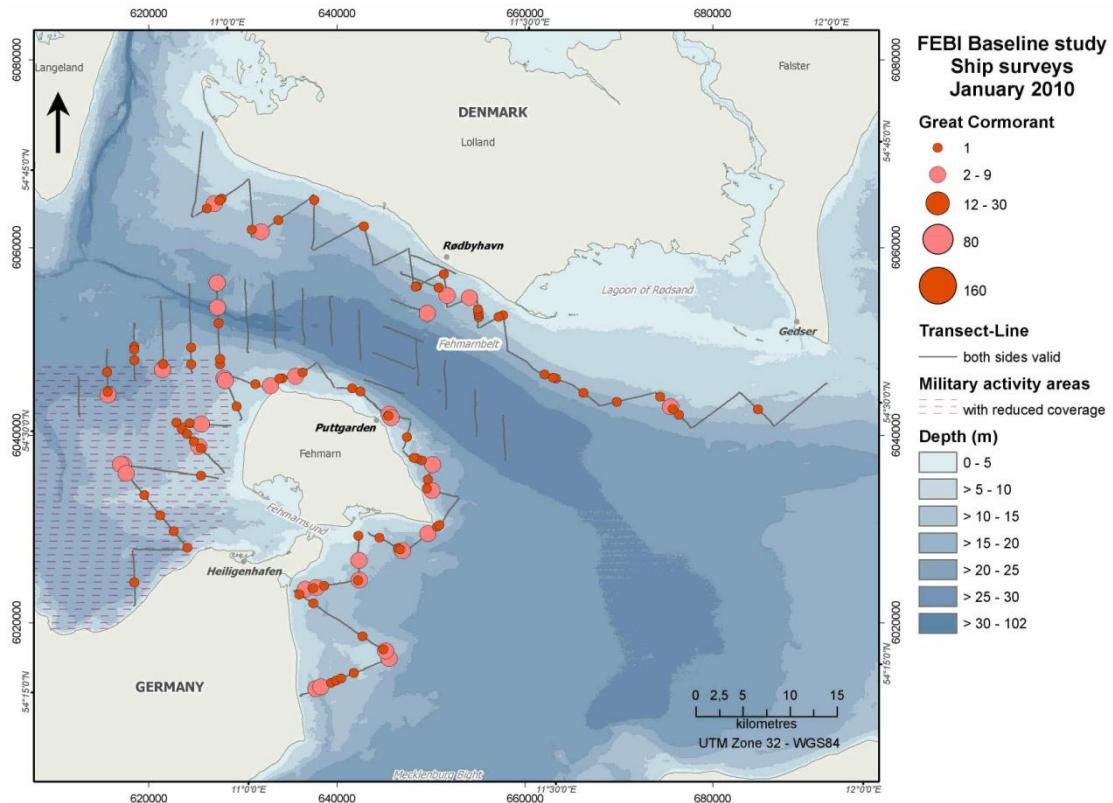


Figure 1.12 Great Cormorant distribution in the study area during ship-based surveys (January 2010).

FEHMARNBELT BIRDS

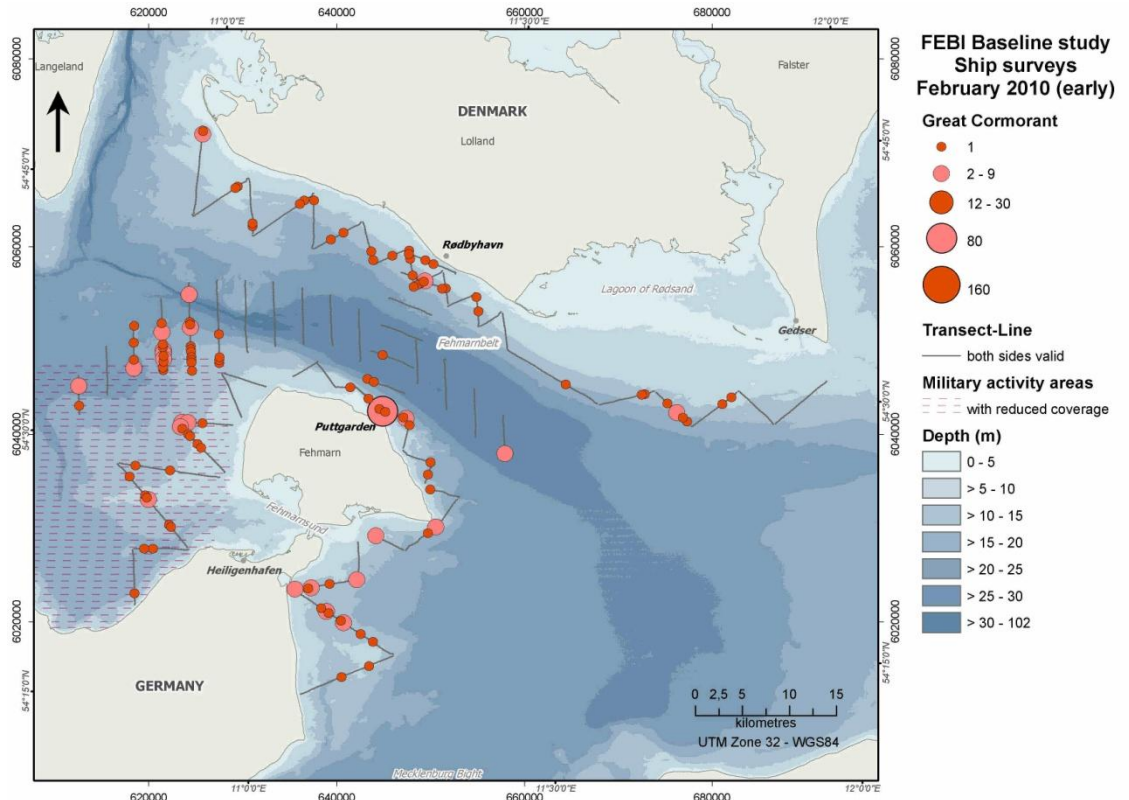


Figure 1.13 Great Cormorant distribution in the study area during ship-based surveys (February 2010).

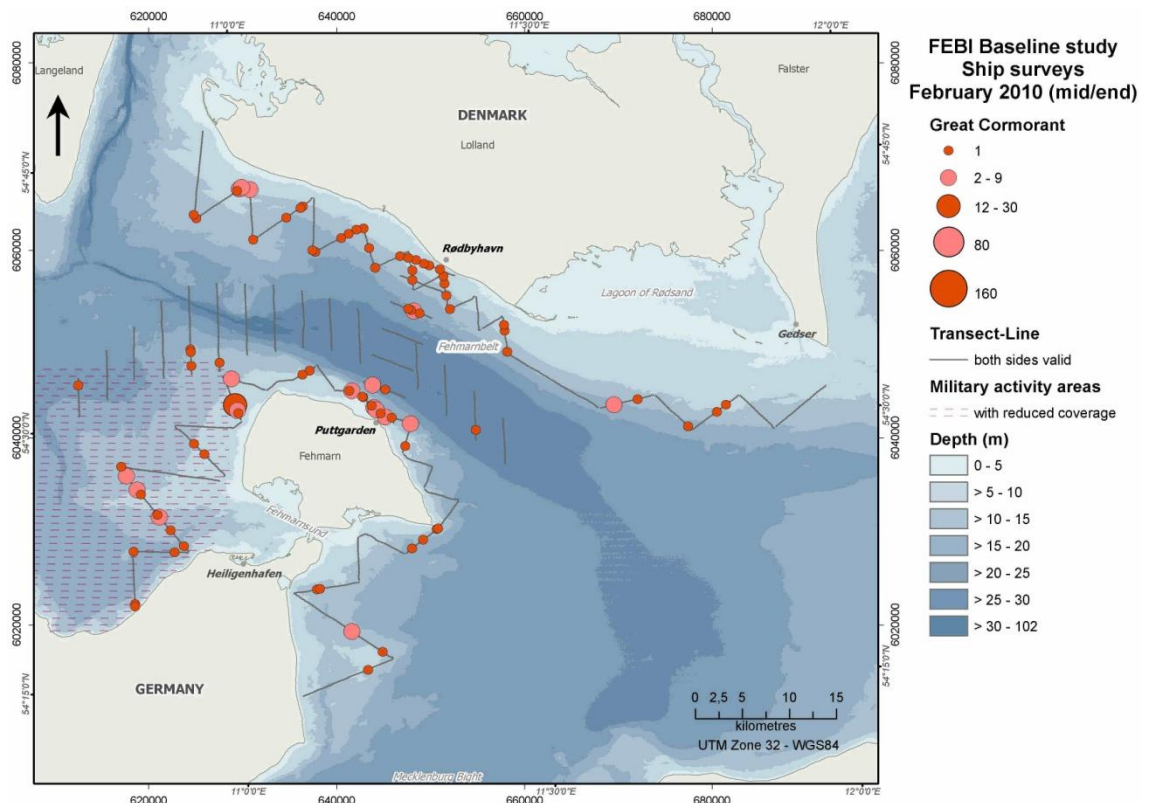


Figure 1.14 Great Cormorant distribution in the study area during ship-based surveys (February 2010).

FEHMARNBELT BIRDS

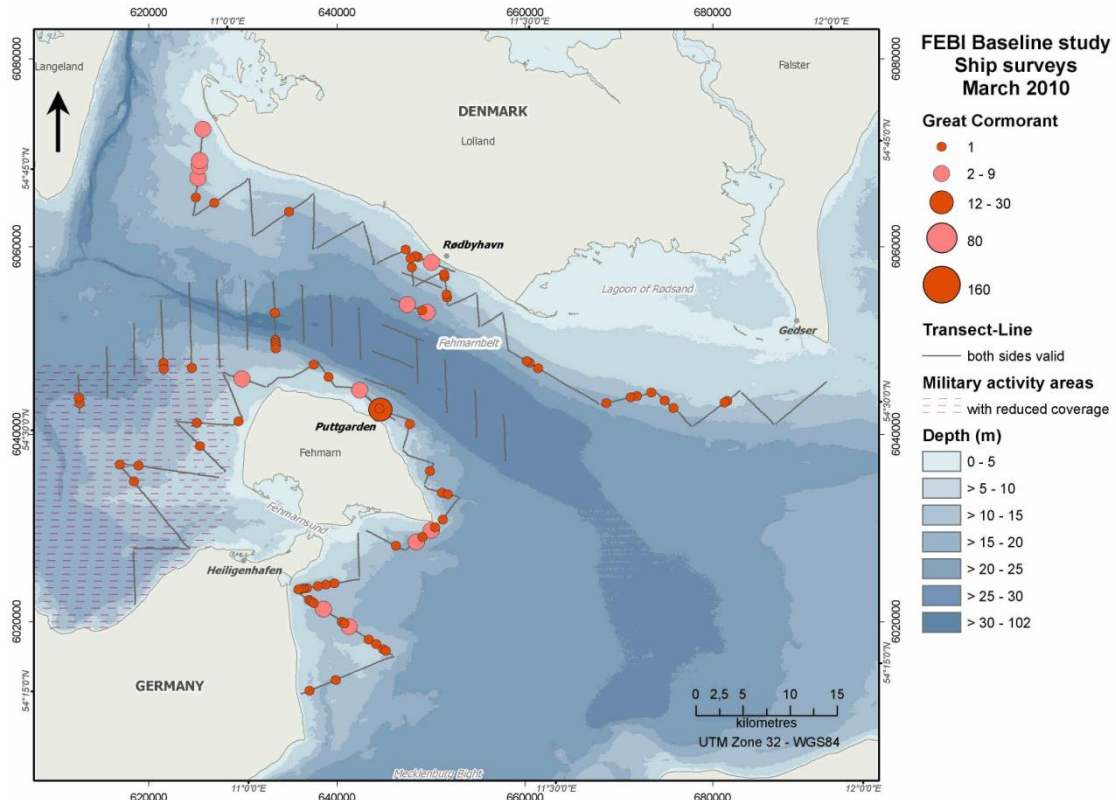


Figure 1.15 Great Cormorant distribution in the study area during ship-based surveys (March 2010).

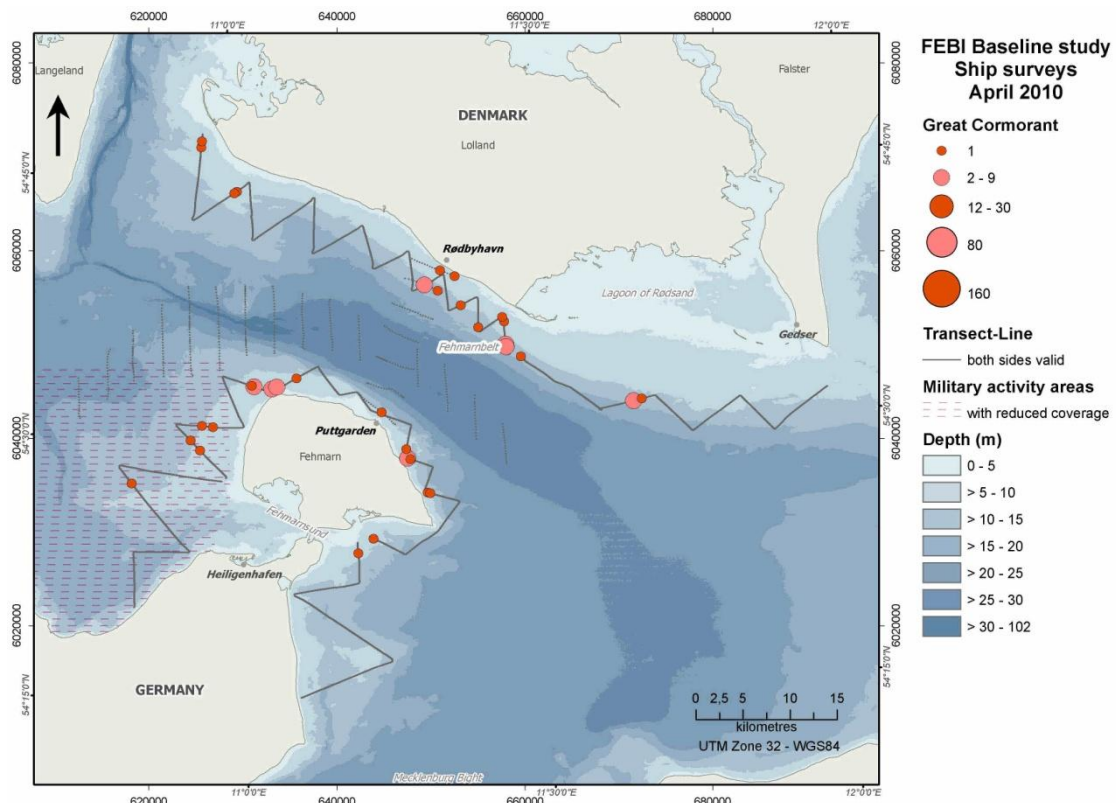


Figure 1.16 Great Cormorant distribution in the study area during ship-based surveys (April 2010).

FEHMARNBELT BIRDS

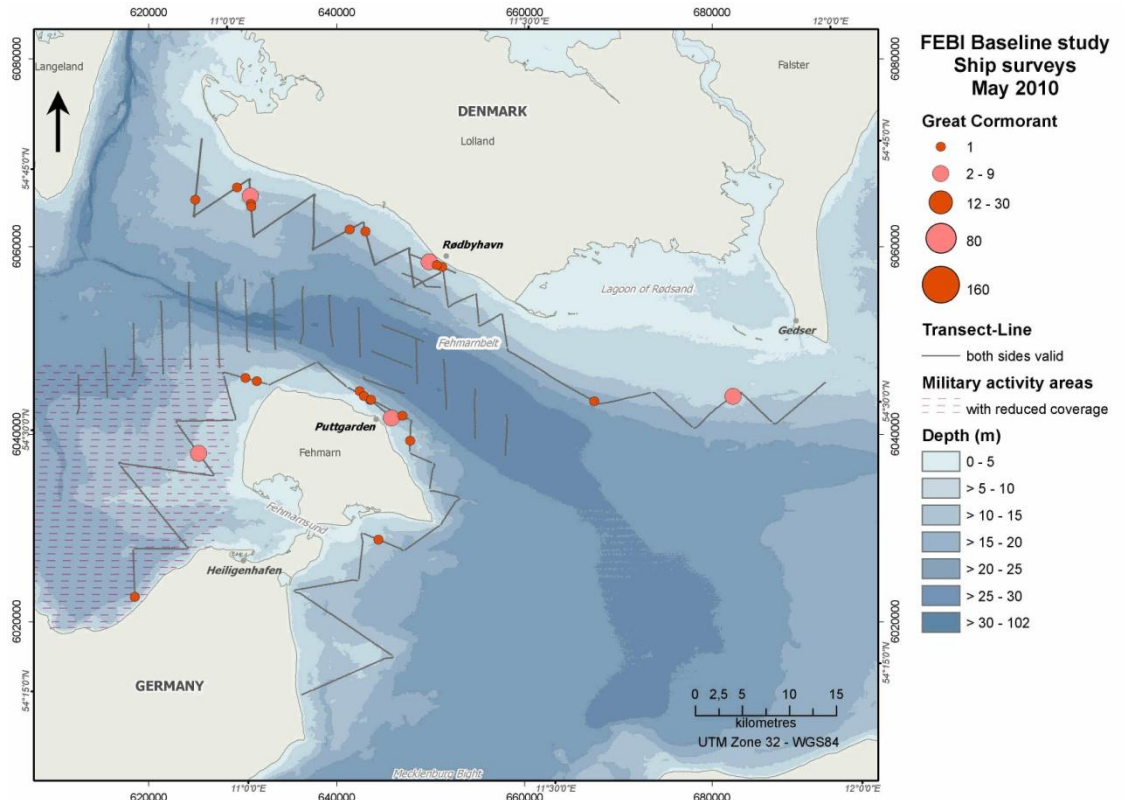


Figure 1.17 Great Cormorant distribution in the study area during ship-based surveys (May 2010).

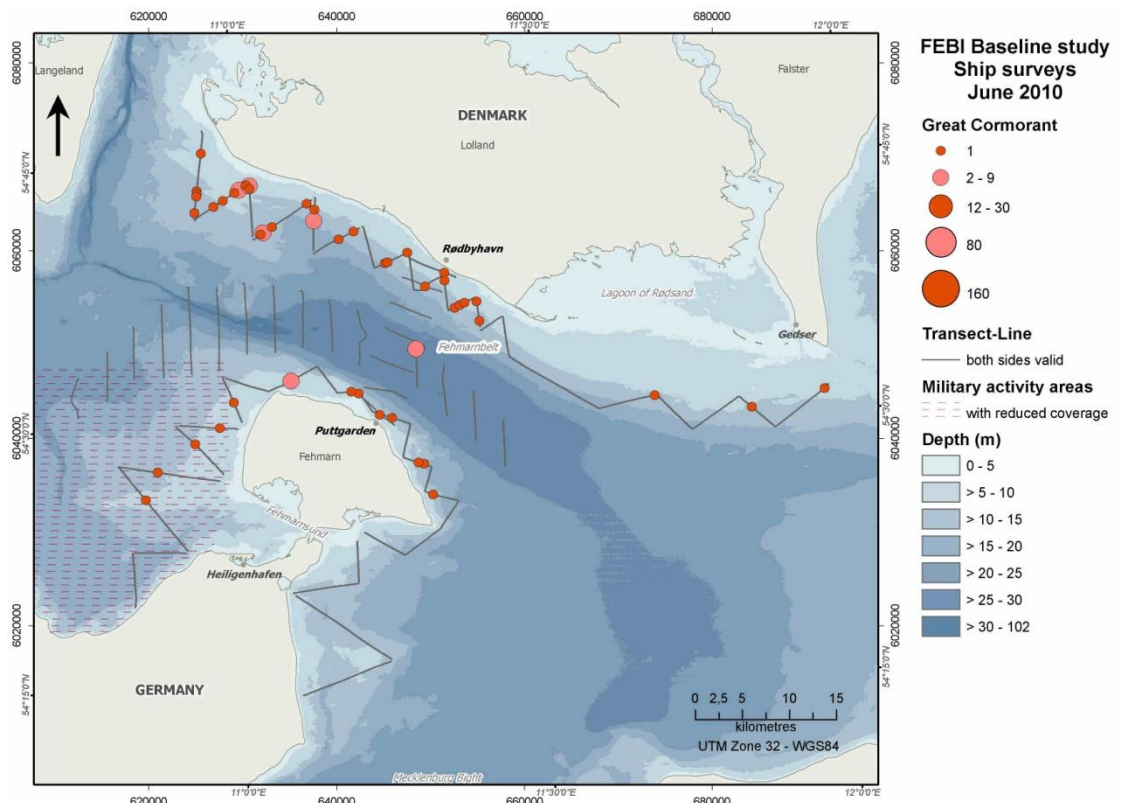


Figure 1.18 Great Cormorant distribution in the study area during ship-based surveys (June 2010).

FEHMARNBELT BIRDS

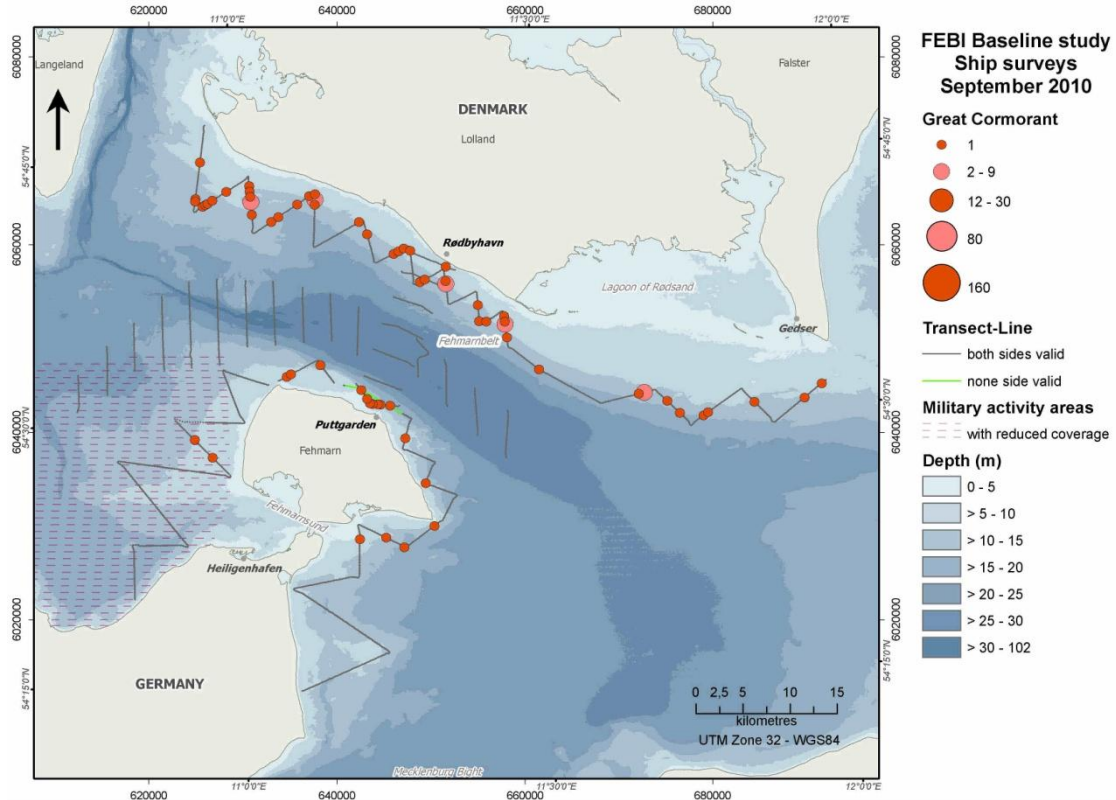


Figure 1.19 Great Cormorant distribution in the study area during ship-based surveys (September 2010).

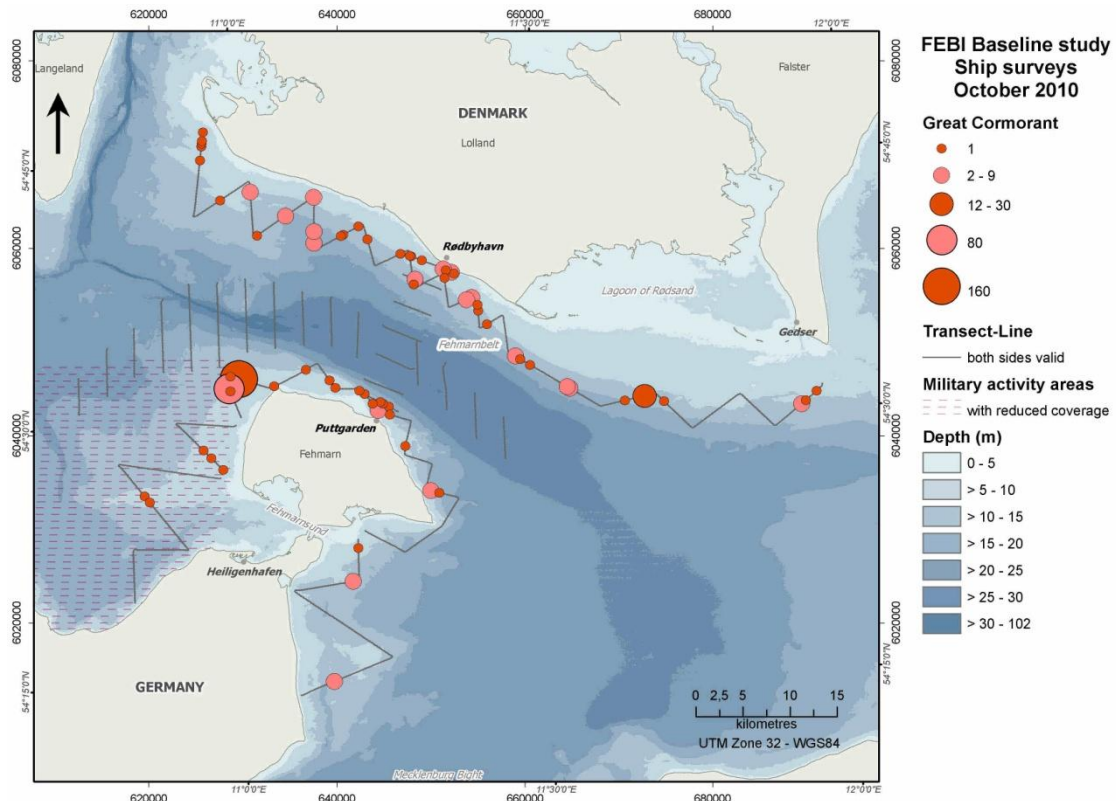


Figure 1.20 Great Cormorant distribution in the study area during ship-based surveys (October 2010).

FEHMARNBELT BIRDS

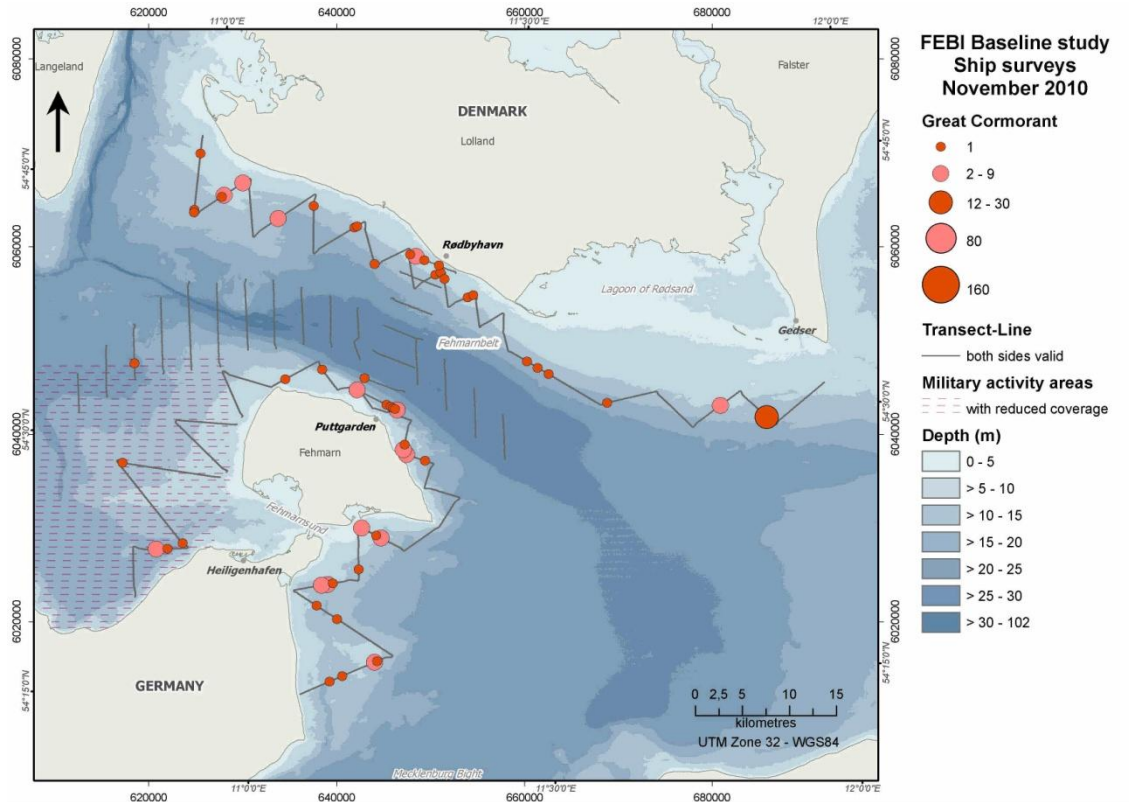


Figure 1.21 Great Cormorant distribution in the study area during ship-based surveys (November 2010).

1.1.4 Common Goldeneye / Greater Scaup / Tufted Duck – *Bucephala clangula* / *Aythya marila* / *Aythya fuligula*

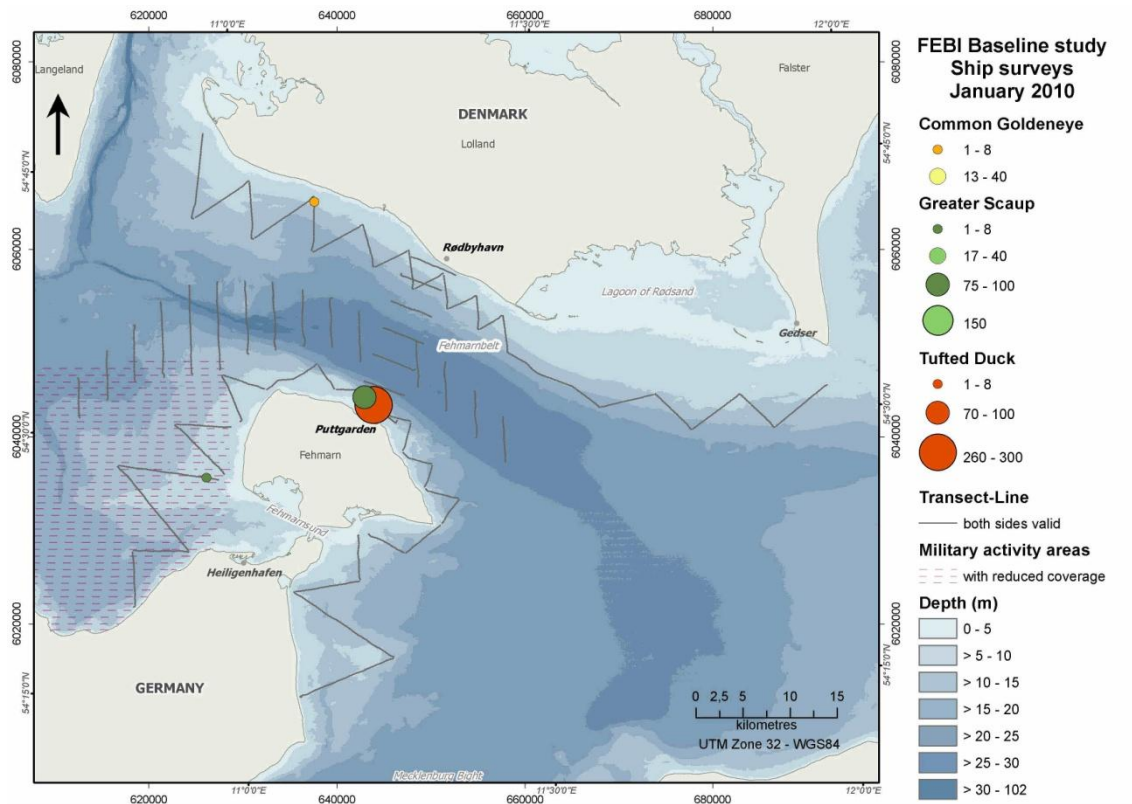


Figure 1.22 Common Goldeneye, Greater Scaup and Tufted Duck distribution in the study area during ship-based surveys (January 2010).

FEHMARNBELT BIRDS

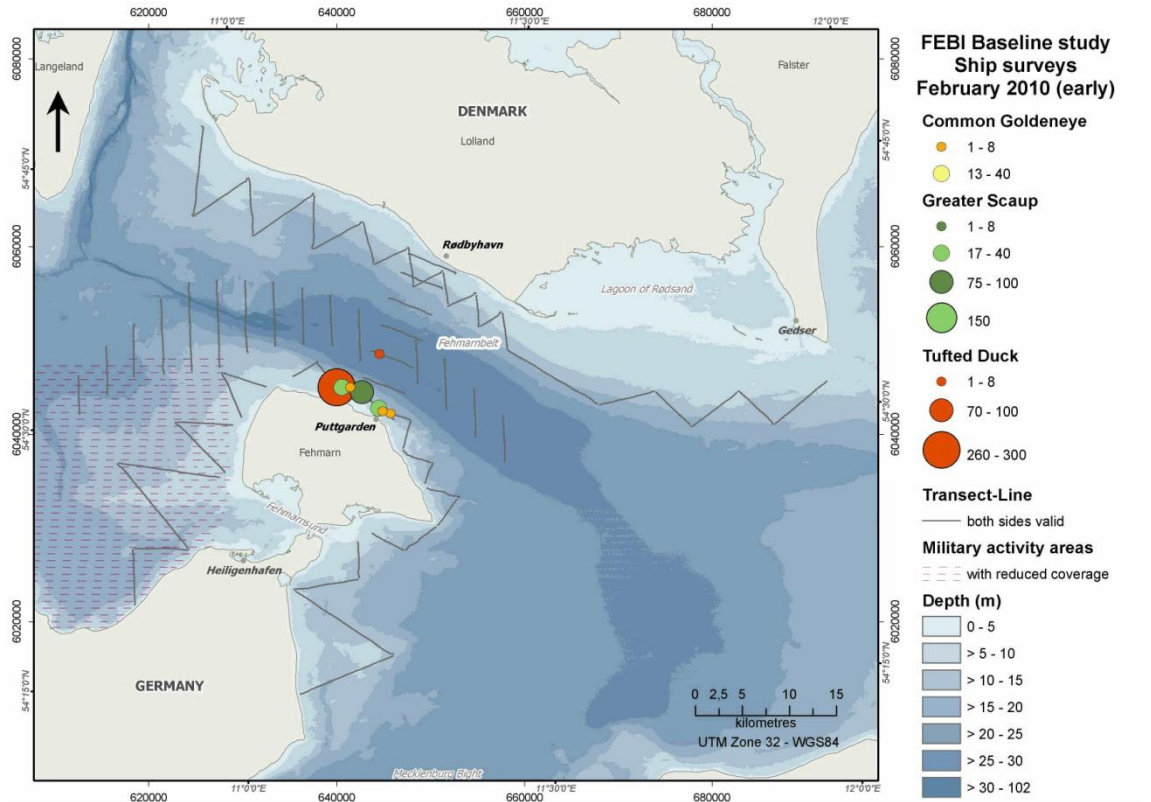


Figure 1.23 Common Goldeneye, Greater Scaup and Tufted Duck distribution in the study area during ship-based surveys (February 2010).

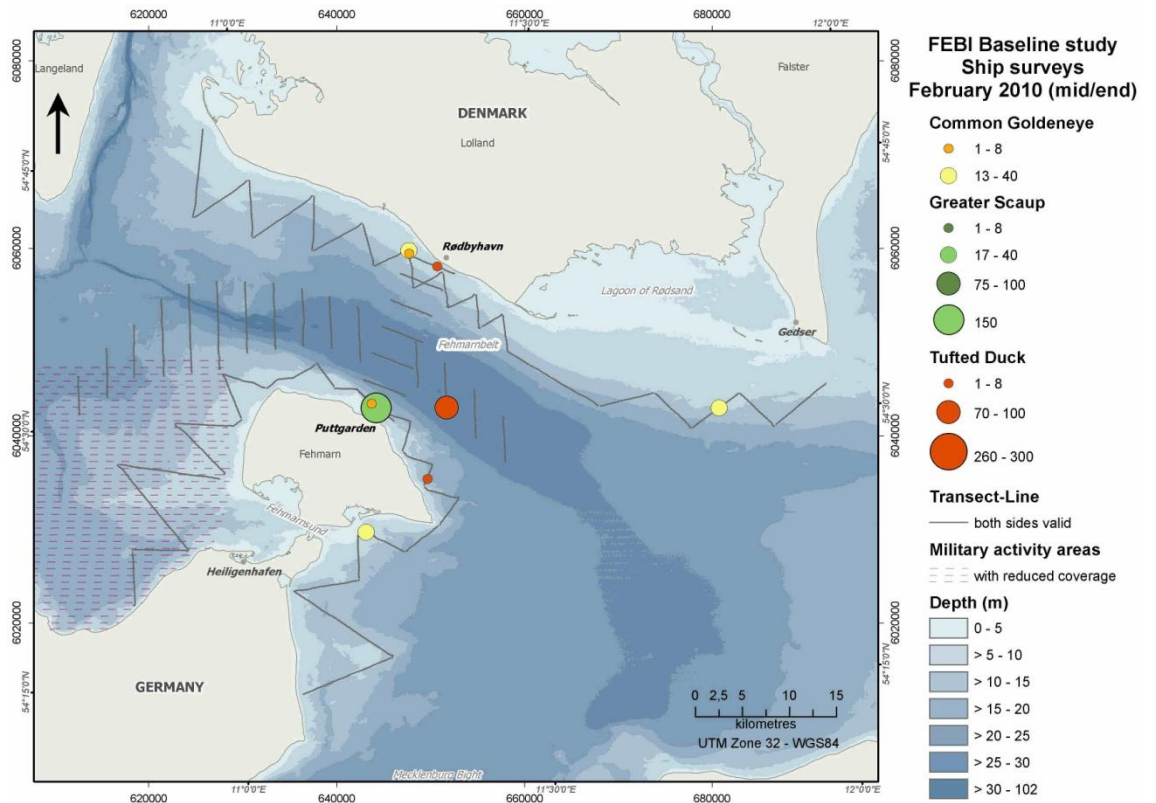


Figure 1.24 Common Goldeneye, Greater Scaup and Tufted Duck distribution in the study area during ship-based surveys (February 2010).

FEHMARNBELT BIRDS

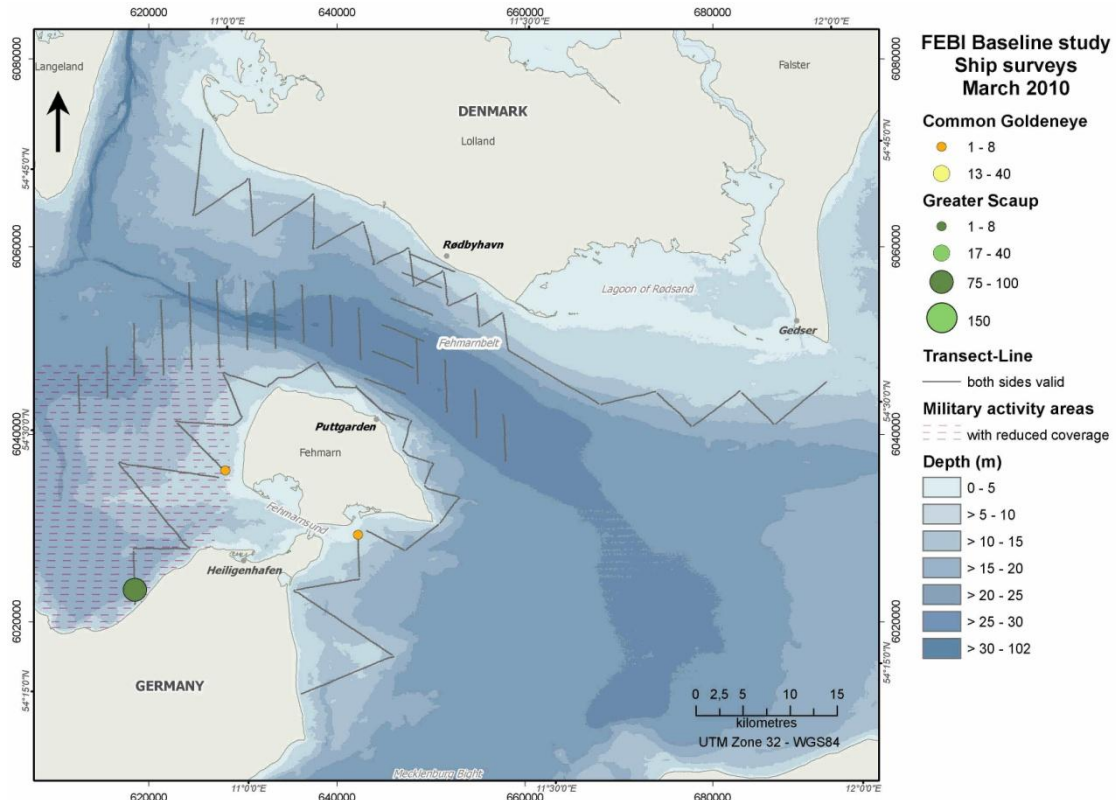


Figure 1.25 Common Goldeneye and Greater Scaup distribution in the study area during ship-based surveys (March 2010).

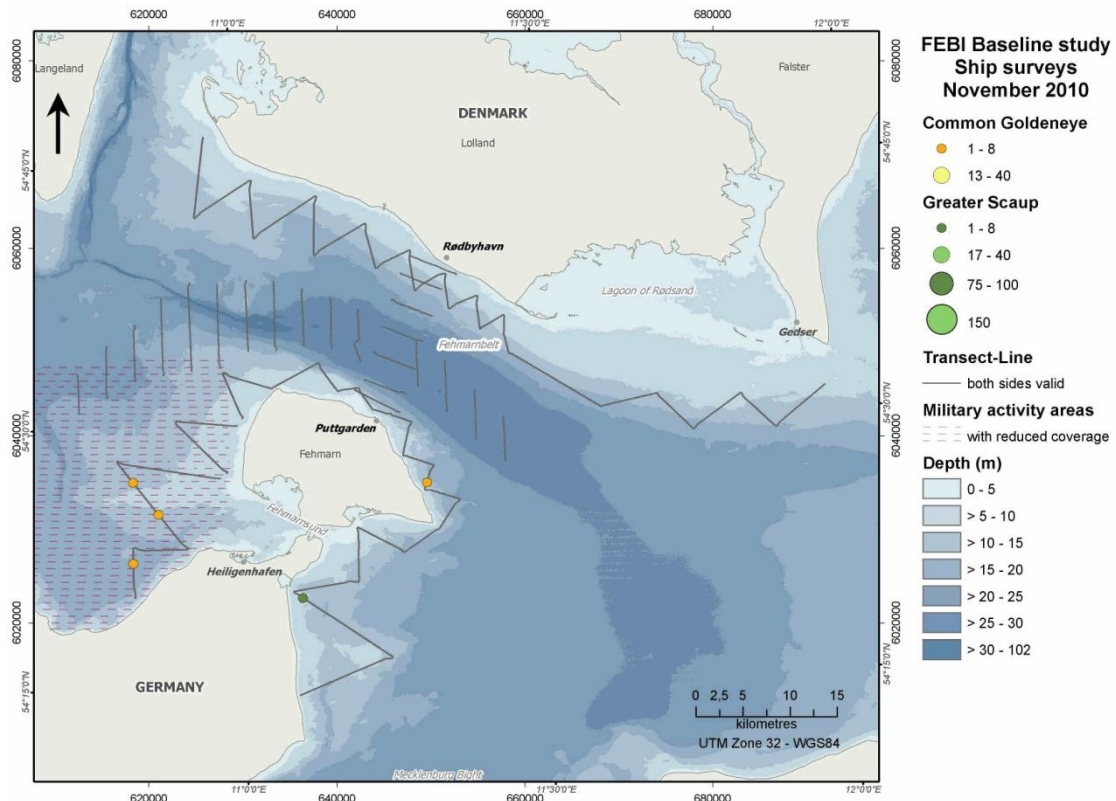


Figure 1.26 Common Goldeneye and Greater Scaup distribution in the study area during ship-based surveys (November 2010).

1.1.5 Common Eider – Somateria mollissima

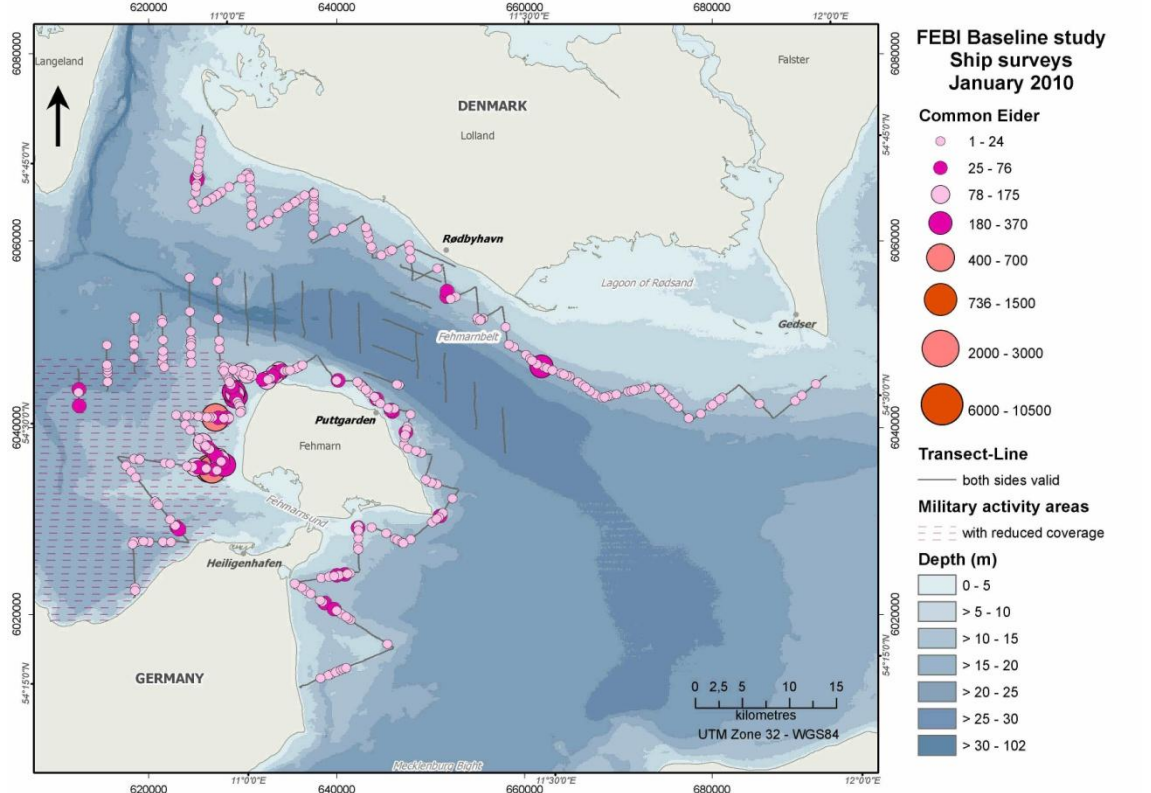


Figure 1.27 Common Eider distribution in the study area during ship-based surveys (January 2010).

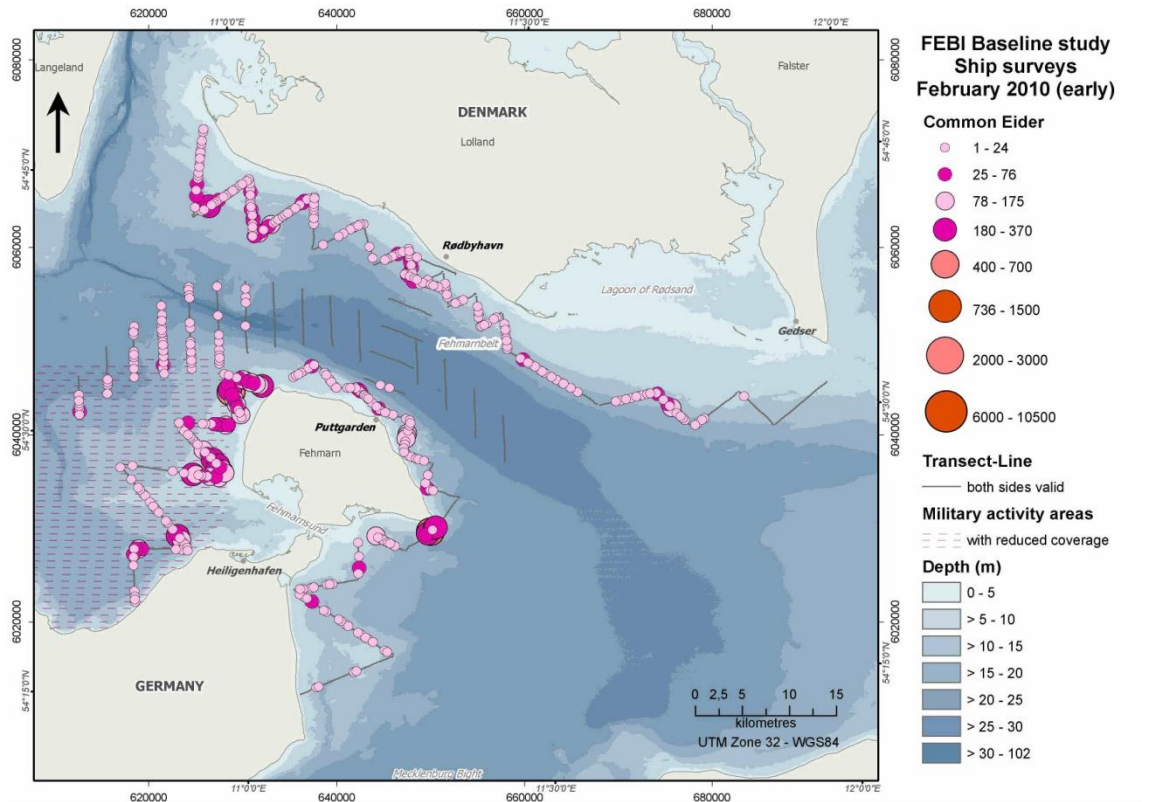


Figure 1.28 Common Eider distribution in the study area during ship-based surveys (February 2010).

FEHMARNBELT BIRDS

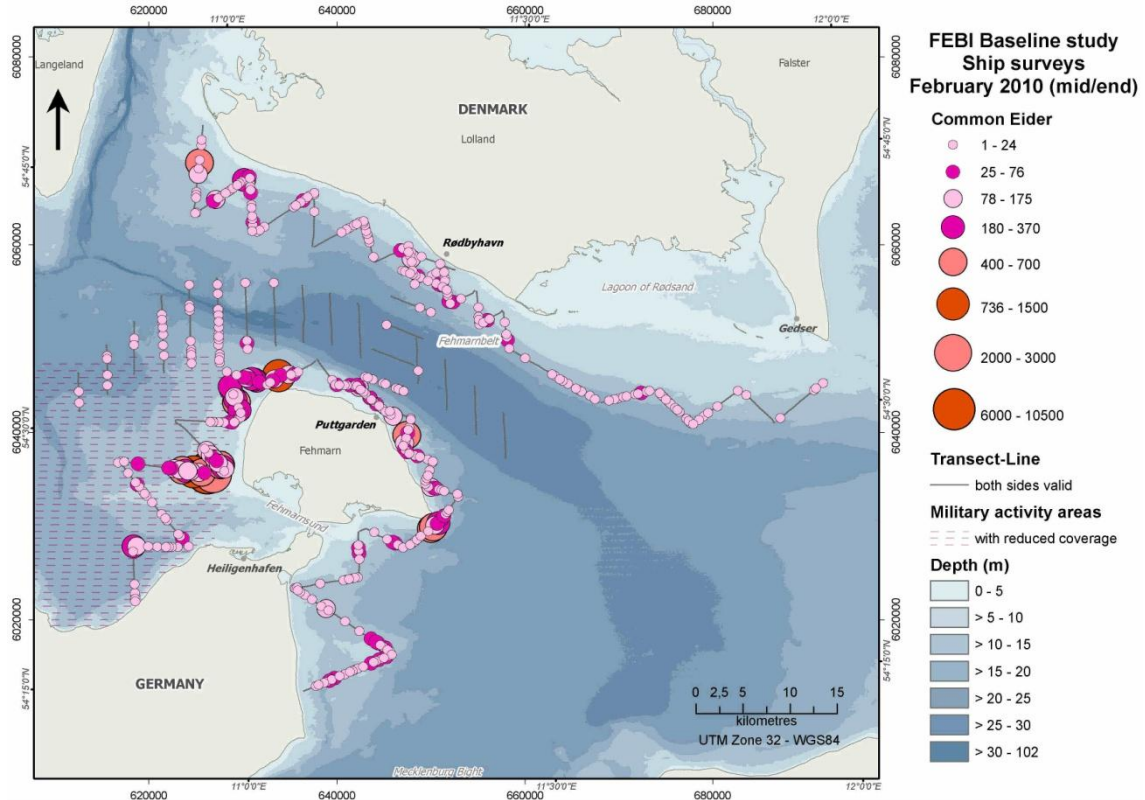


Figure 1.29 Common Eider distribution in the study area during ship-based surveys (February 2010).

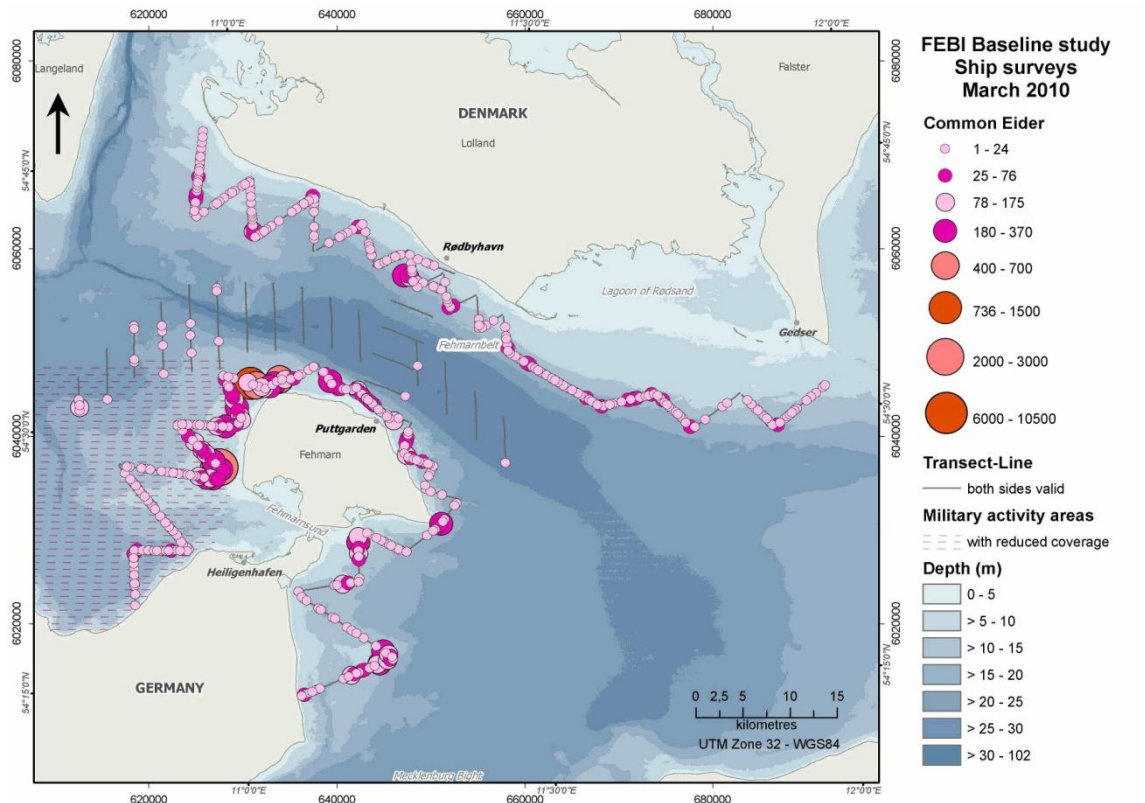


Figure 1.30 Common Eider distribution in the study area during ship-based surveys (March 2010).

FEHMARNBELT BIRDS

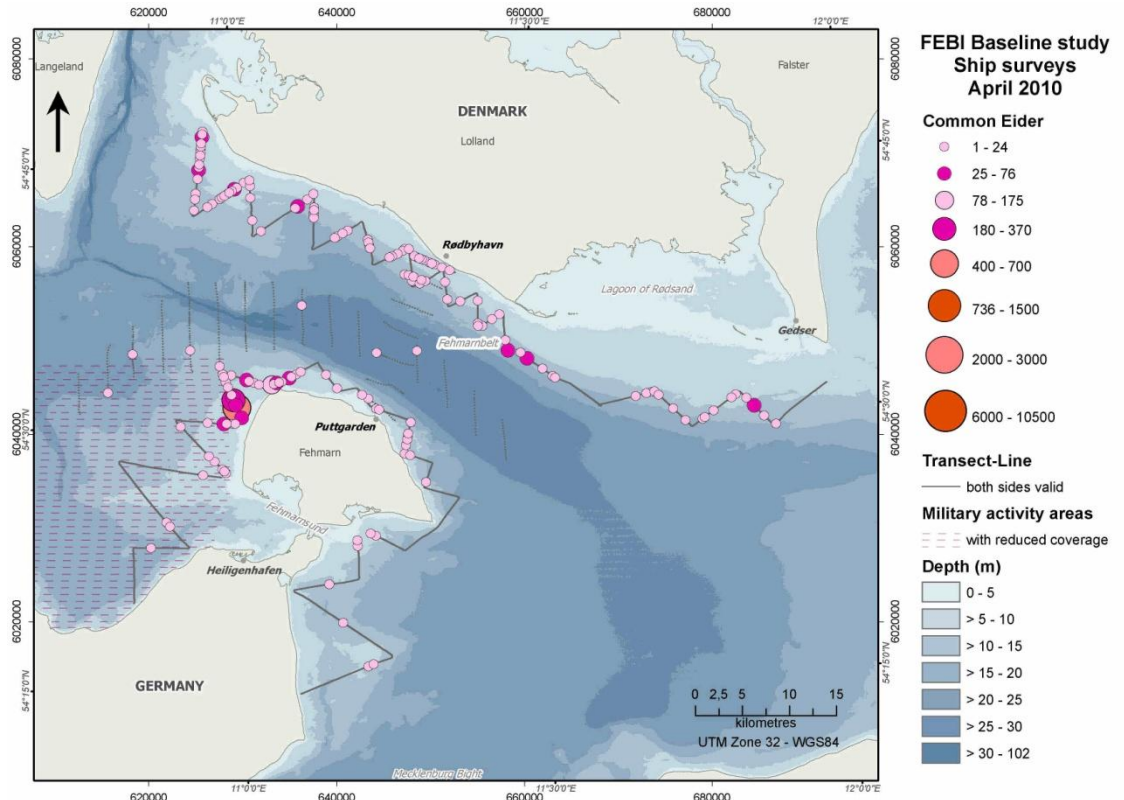


Figure 1.31 Common Eider distribution in the study area during ship-based surveys (April 2010).

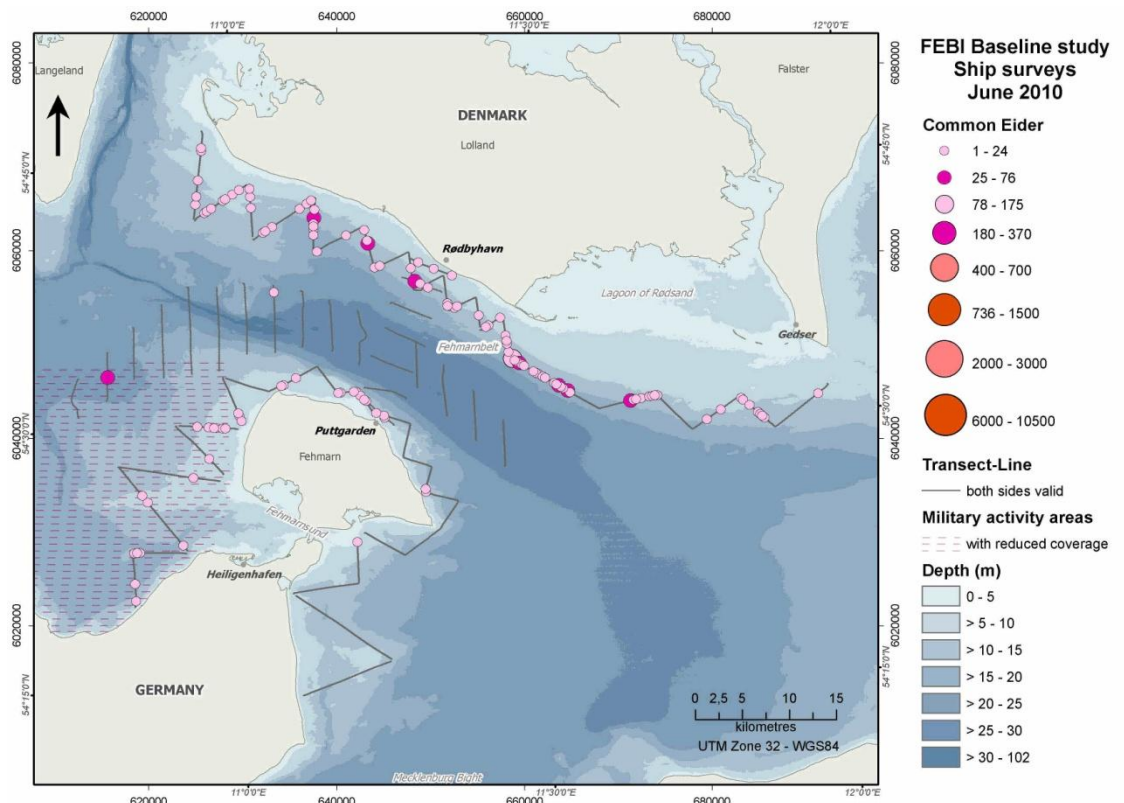


Figure 1.32 Common Eider distribution in the study area during ship-based surveys (June 2010).

FEHMARNBELT BIRDS

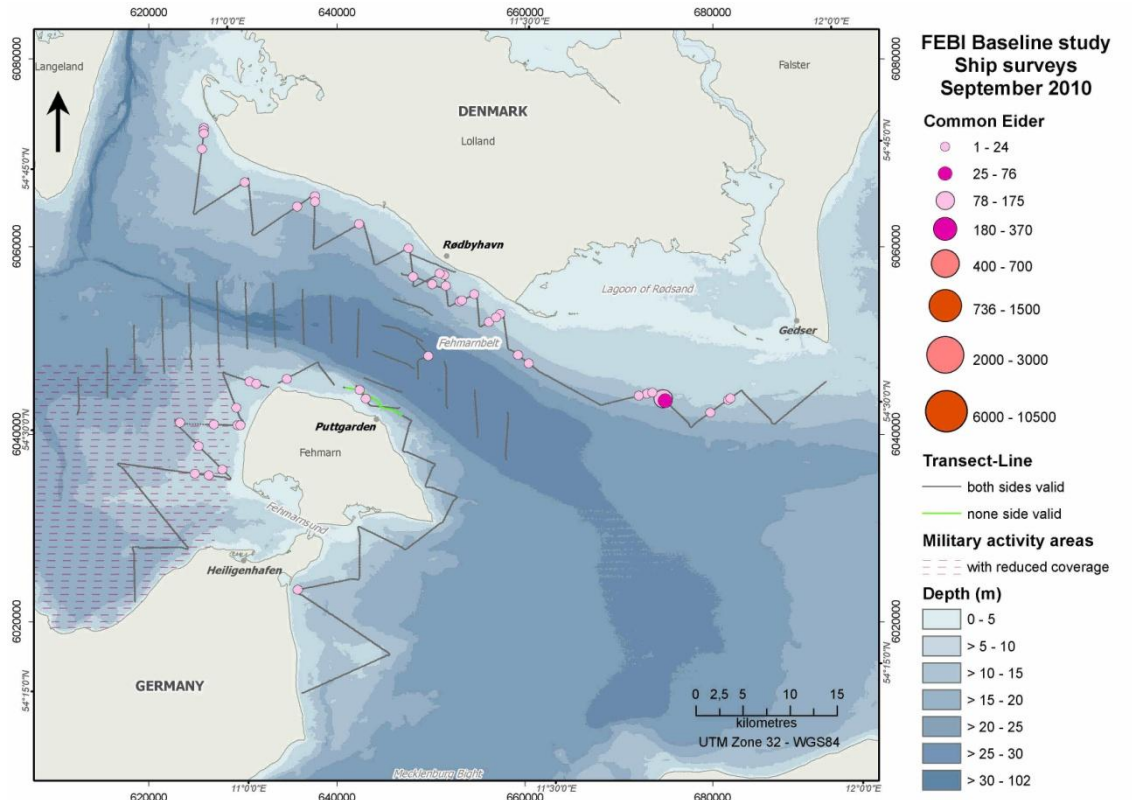


Figure 1.33 Common Eider distribution in the study area during ship-based surveys (September 2010).

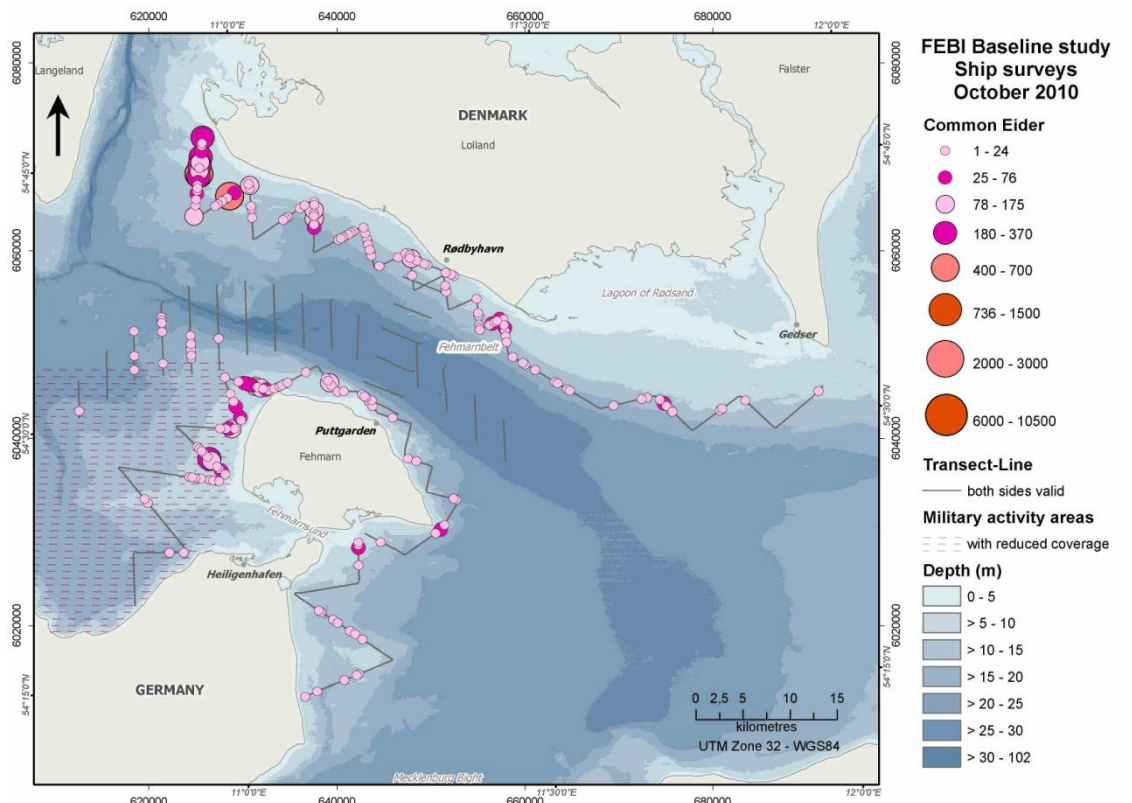


Figure 1.34 Common Eider distribution in the study area during ship-based surveys (October 2010).

FEHMARNBELT BIRDS

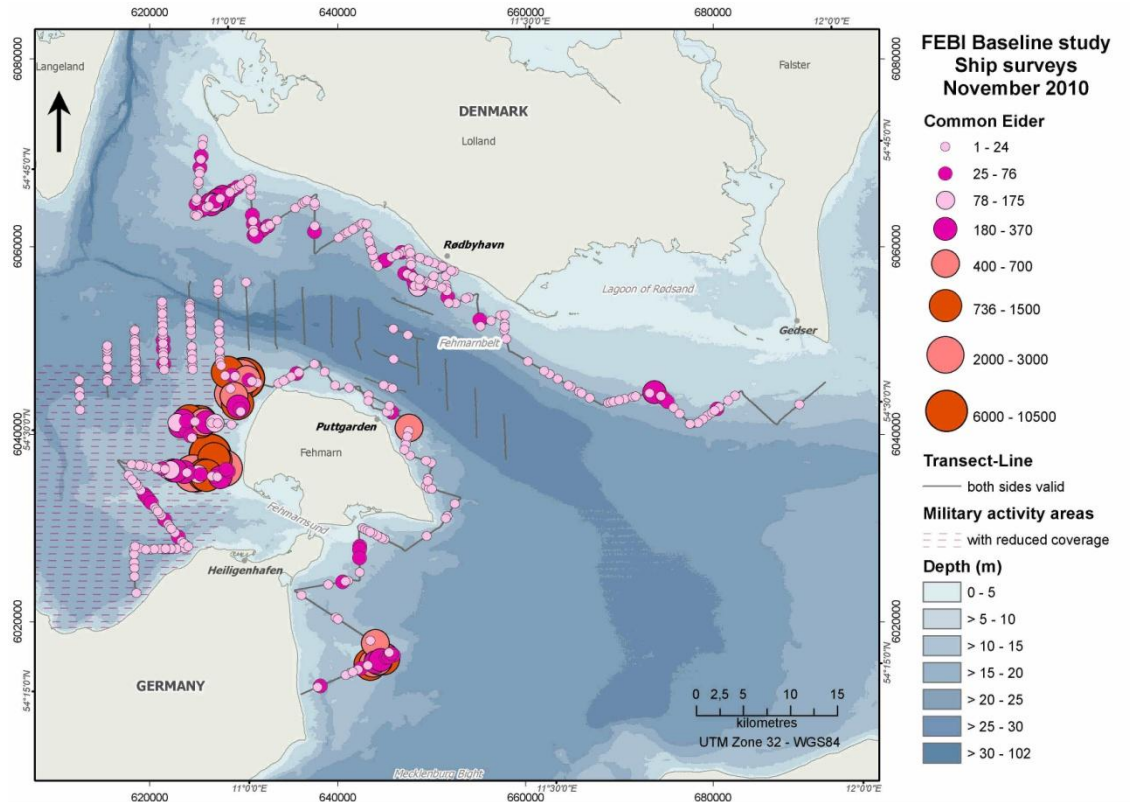


Figure 1.35 Common Eider distribution in the study area during ship-based surveys (November 2010).

1.1.6 Long-tailed Duck – *Clangula hyemalis*

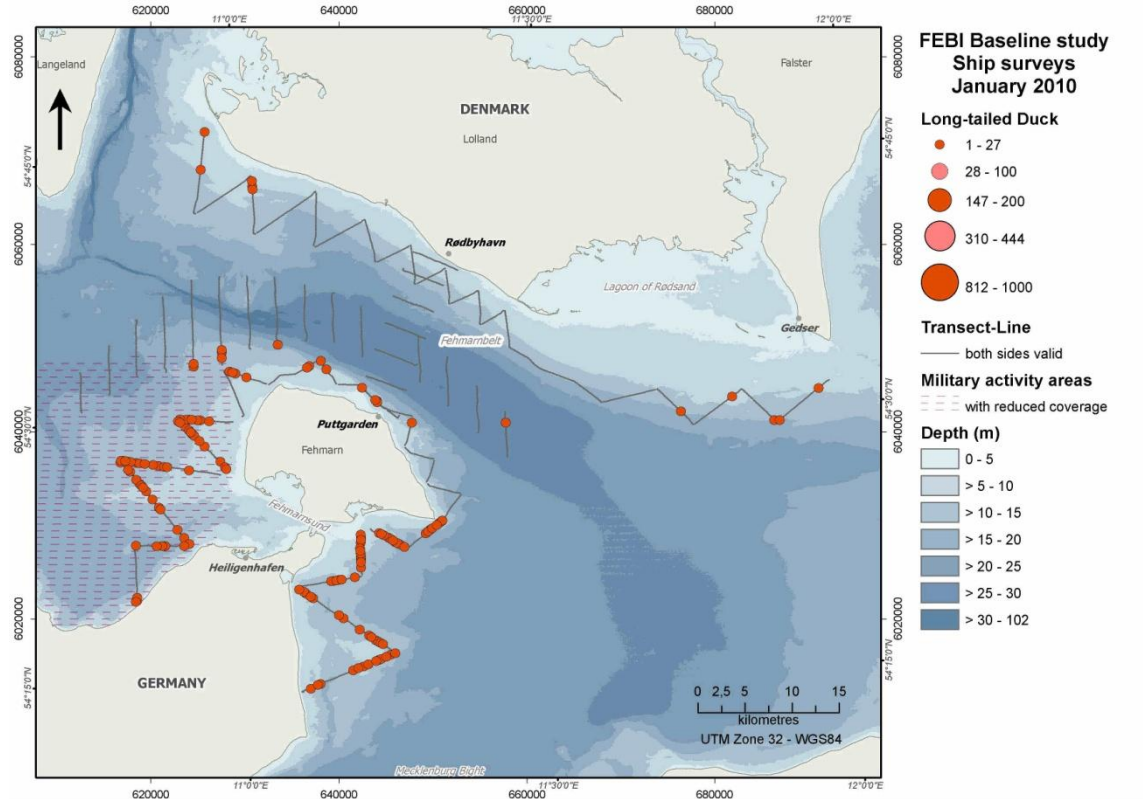


Figure 1.36 Long-tailed Duck distribution in the study area during ship-based surveys (January 2010).

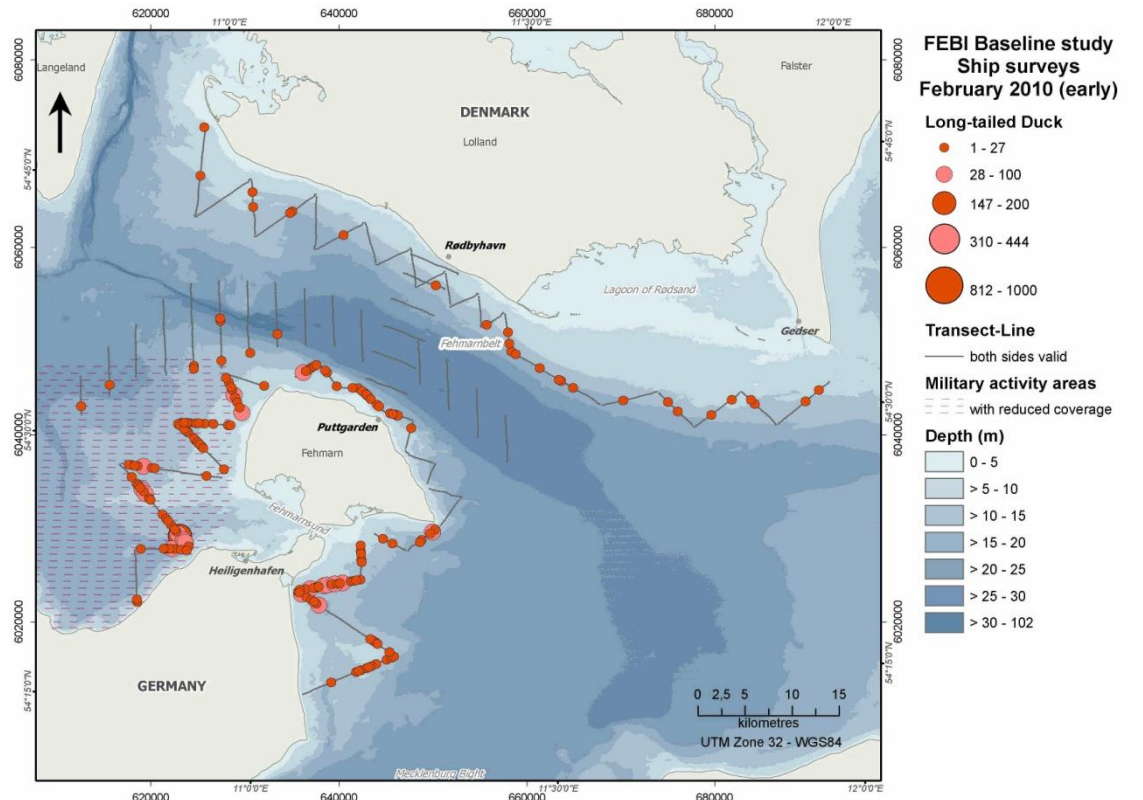


Figure 1.37 Long-tailed Duck distribution in the study area during ship-based surveys (February 2010).

FEHMARNBELT BIRDS

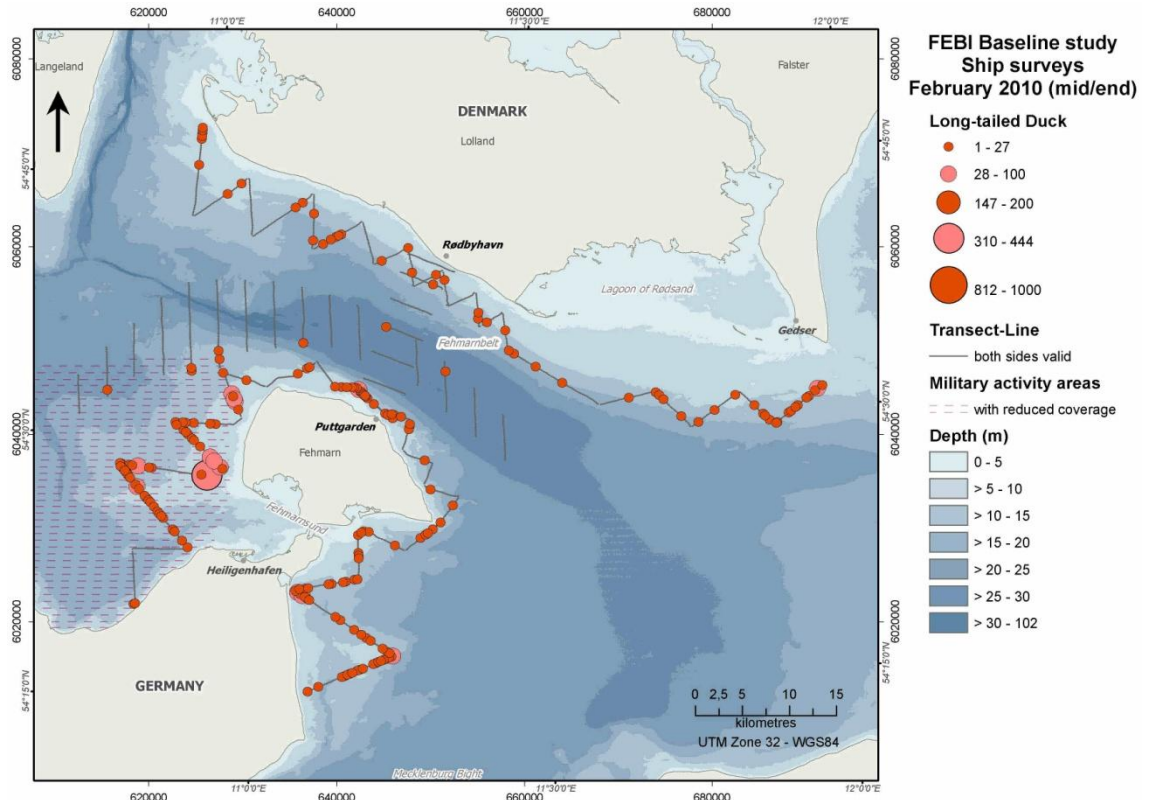


Figure 1.38 Long-tailed Duck distribution in the study area during ship-based surveys (February 2010).

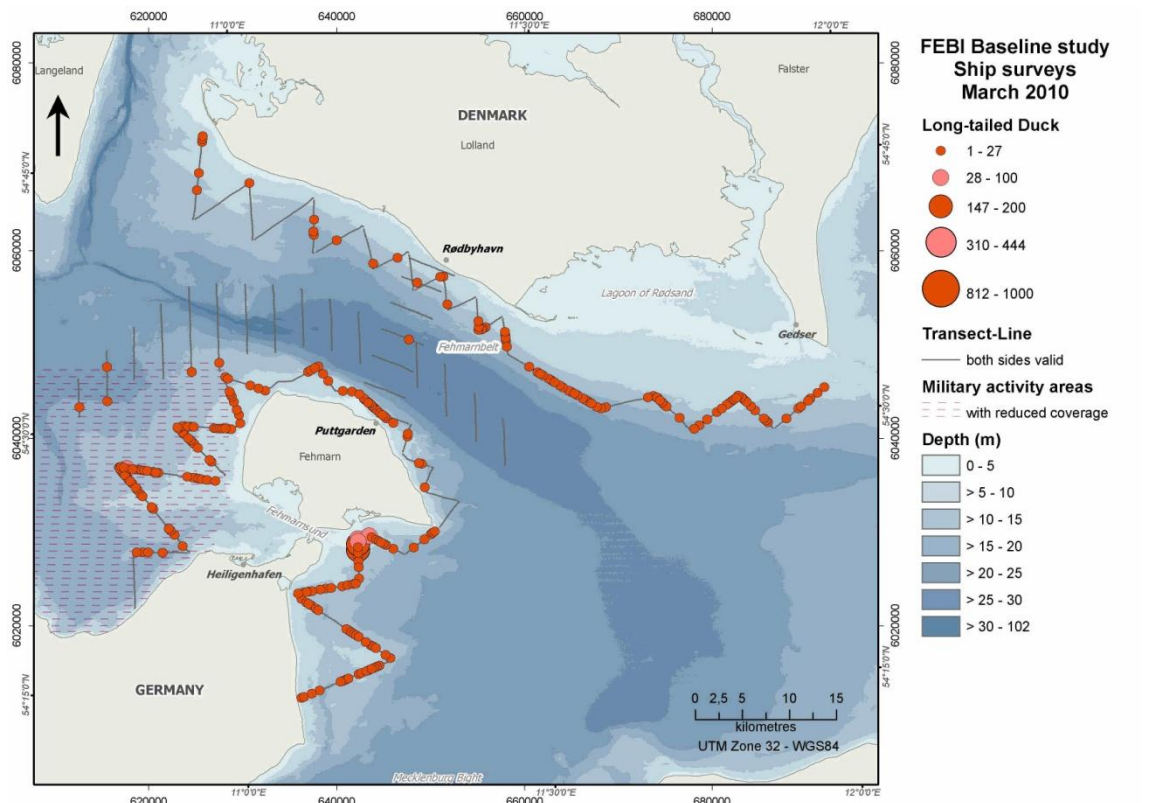


Figure 1.39 Long-tailed Duck distribution in the study area during ship-based surveys (March 2010).

FEHMARNBELT BIRDS

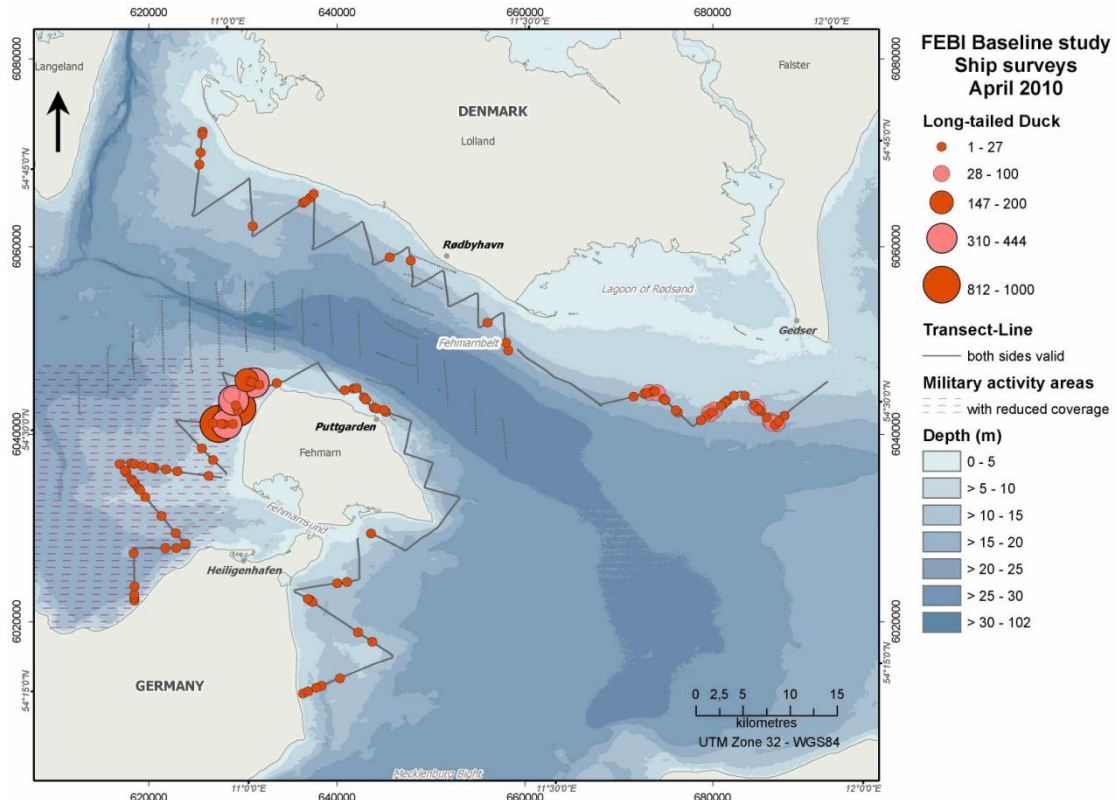


Figure 1.40 Long-tailed Duck distribution in the study area during ship-based surveys (April 2010).

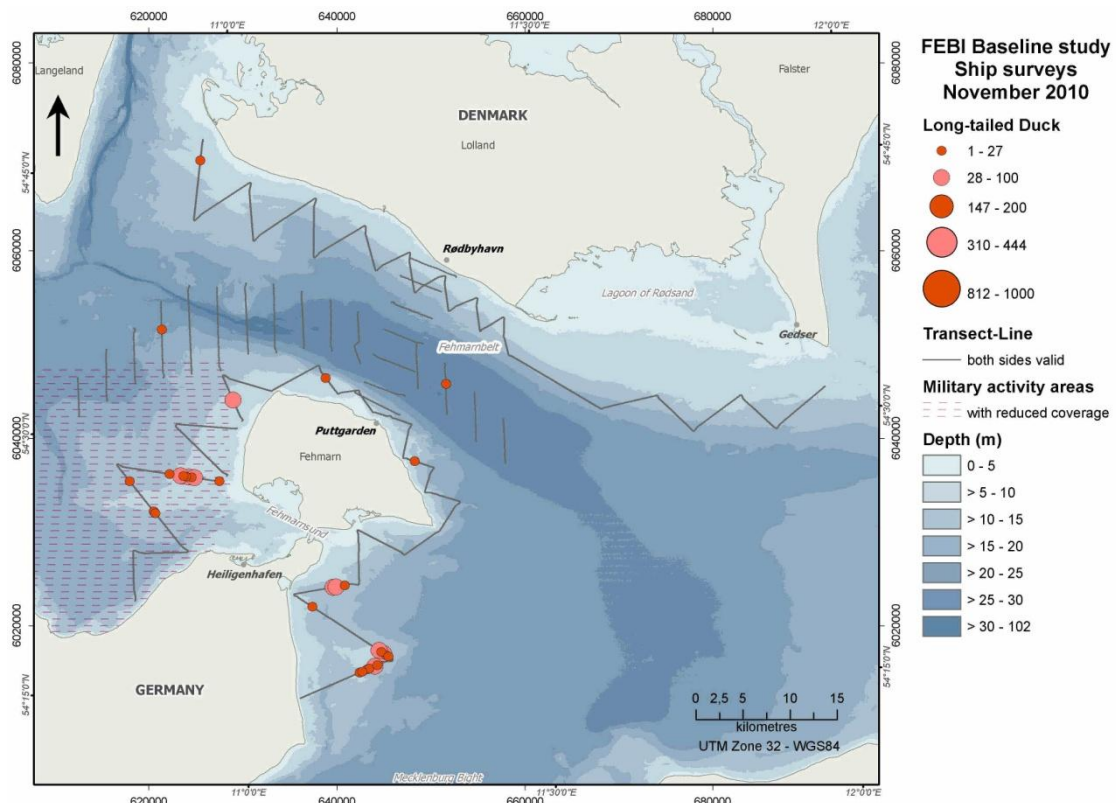


Figure 1.41 Long-tailed Duck distribution in the study area during ship-based surveys (November 2010).

1.1.7 Velvet Scoter / Common Scoter – *Melanitta fusca* / *Melanitta nigra*

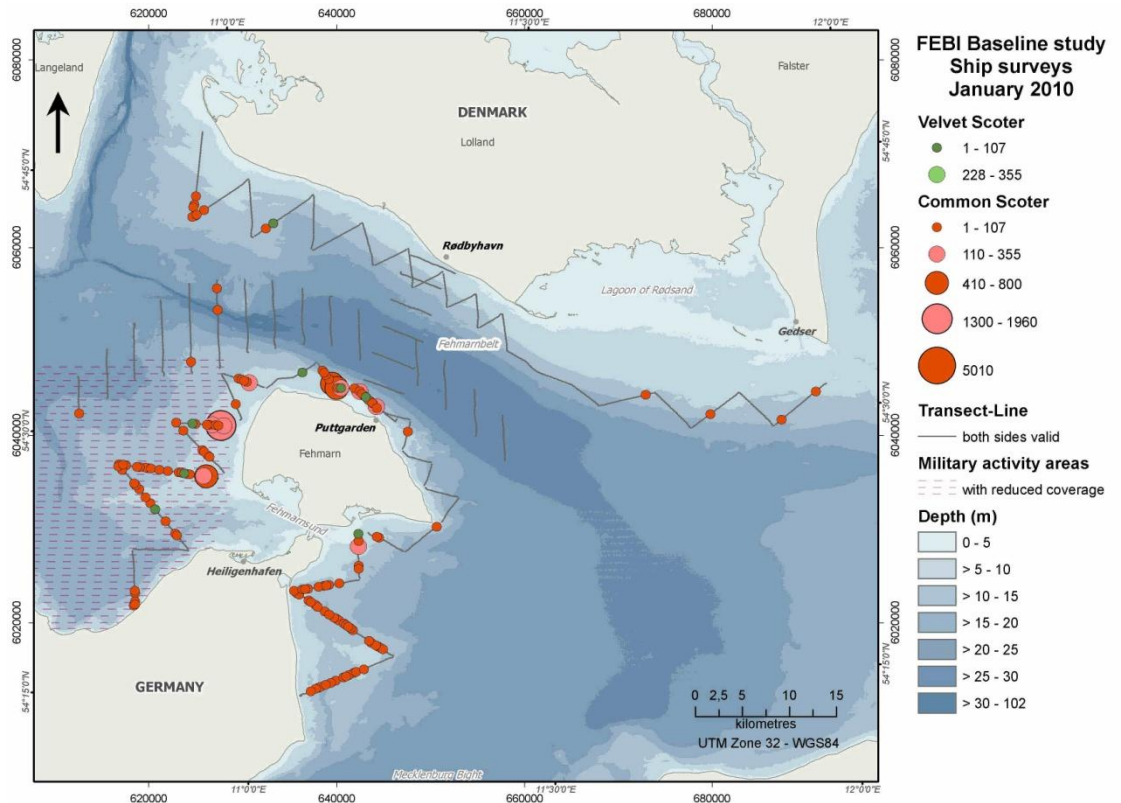


Figure 1.42 Velvet Scoter and Common Scoter distribution in the study area during ship-based surveys (January 2010).

FEHMARNBELT BIRDS

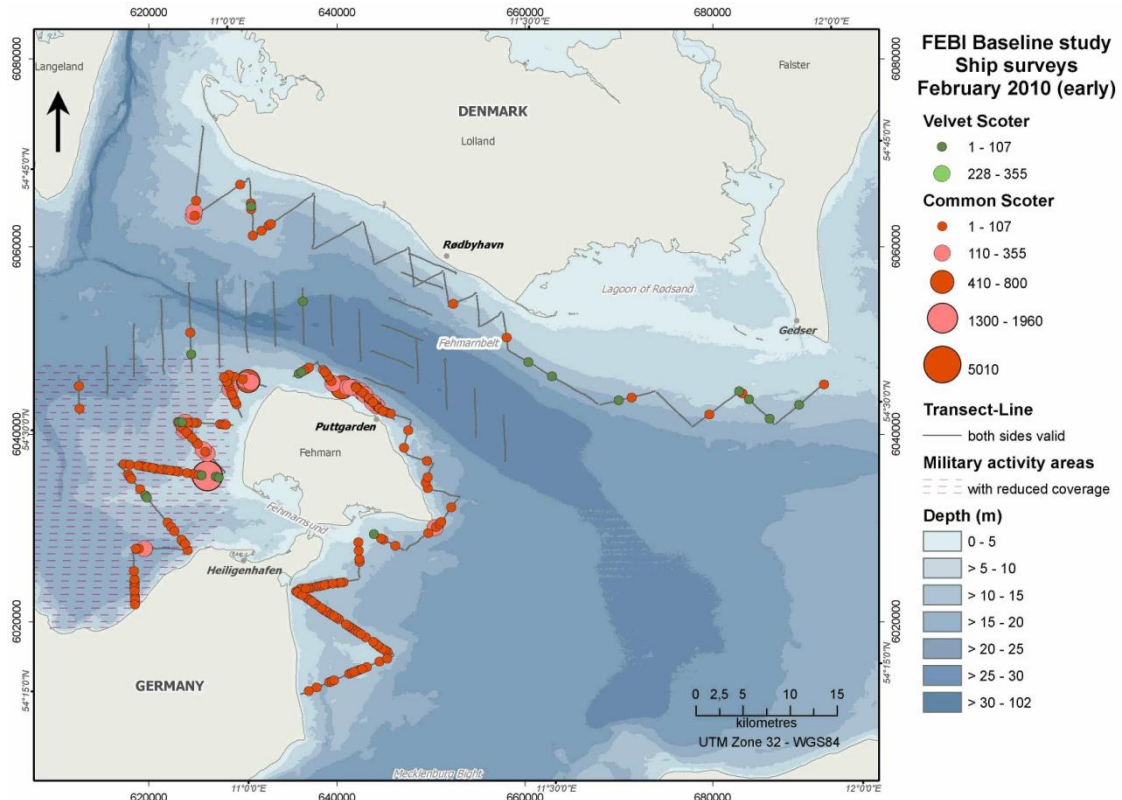


Figure 1.43 Velvet Scoter and Common Scoter distribution in the study area during ship-based surveys (February 2010).

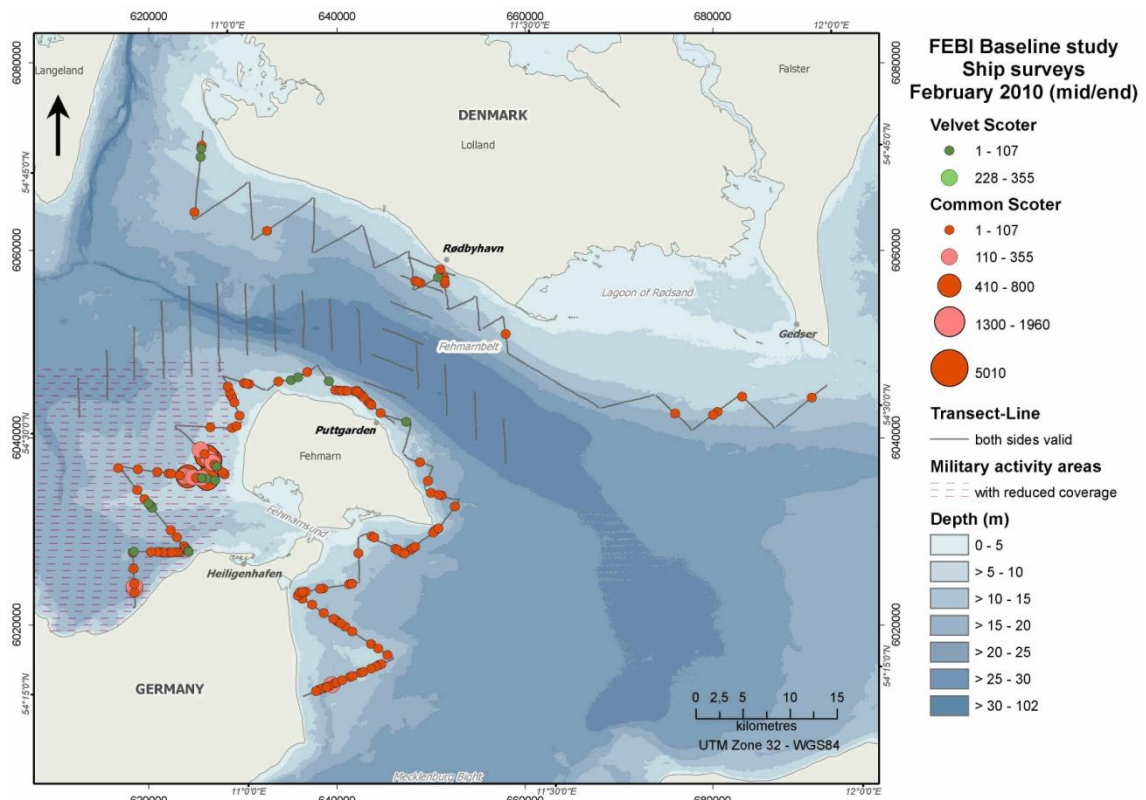


Figure 1.44 Velvet Scoter and Common Scoter distribution in the study area during ship-based surveys (February 2010).

FEHMARNBELT BIRDS

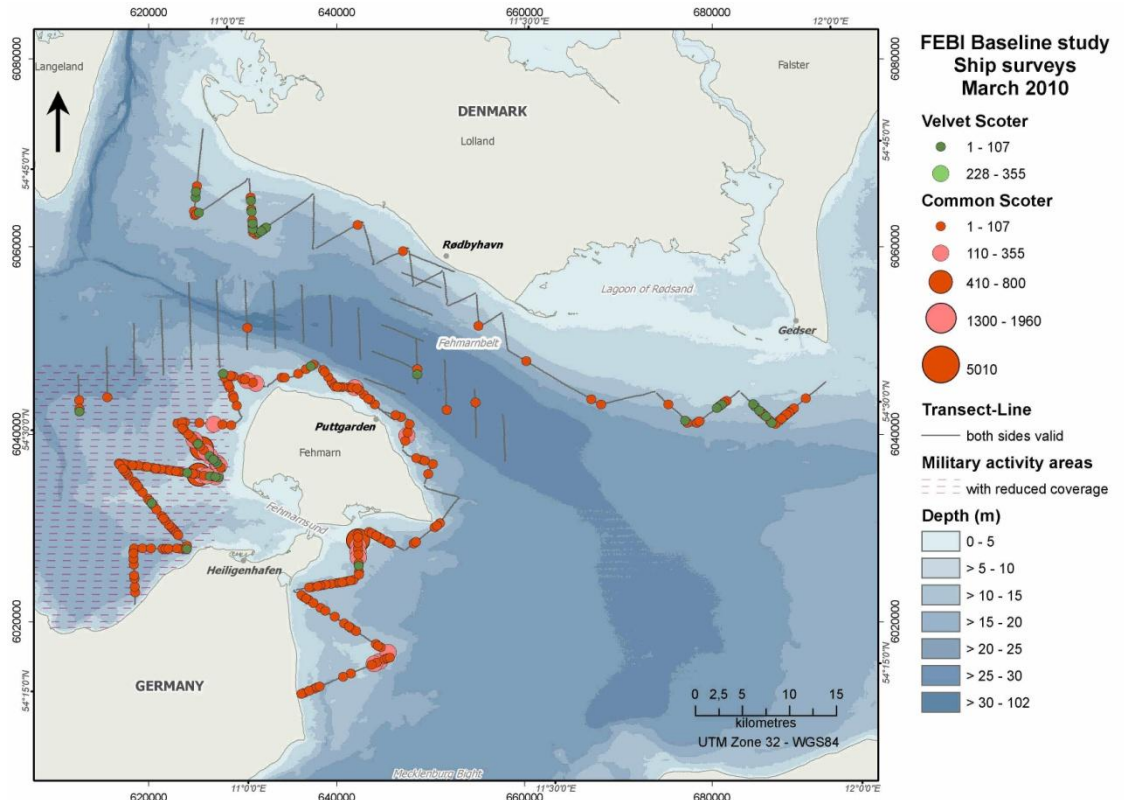


Figure 1.45 Velvet Scoter and Common Scoter distribution in the study area during ship-based surveys (March 2010).

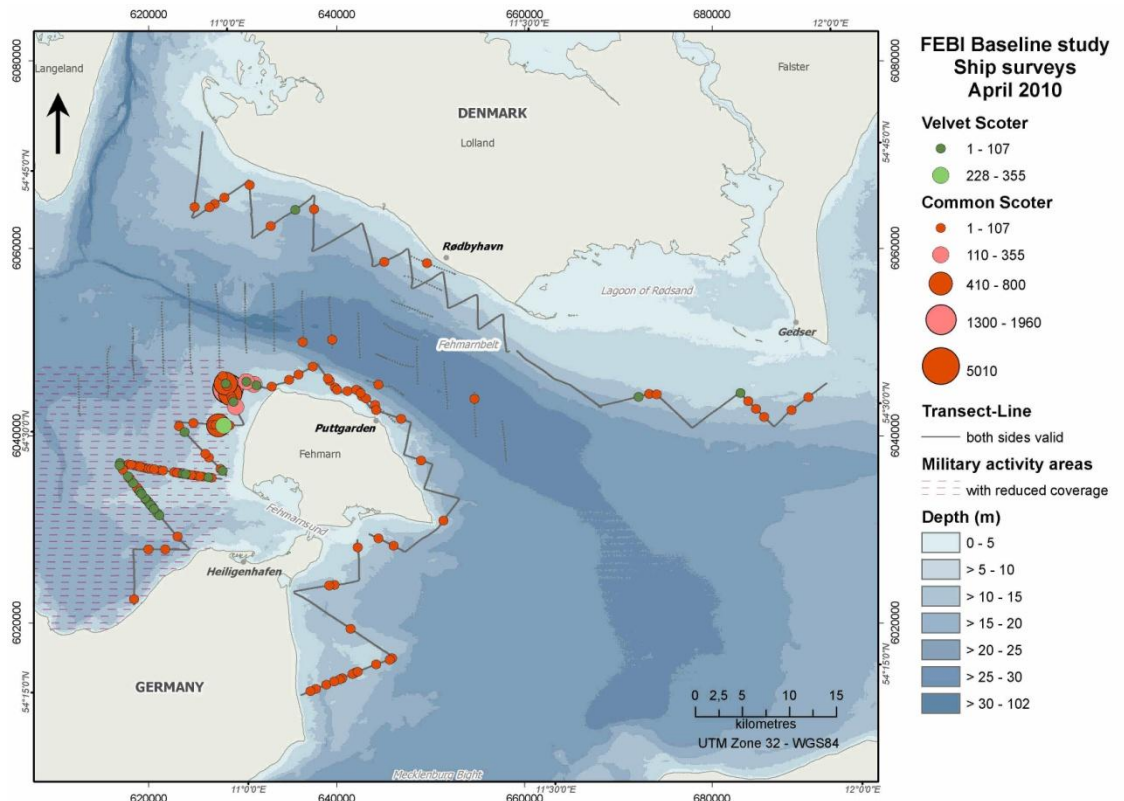


Figure 1.46 Velvet Scoter and Common Scoter distribution in the study area during ship-based surveys (April 2010).

FEHMARNBELT BIRDS

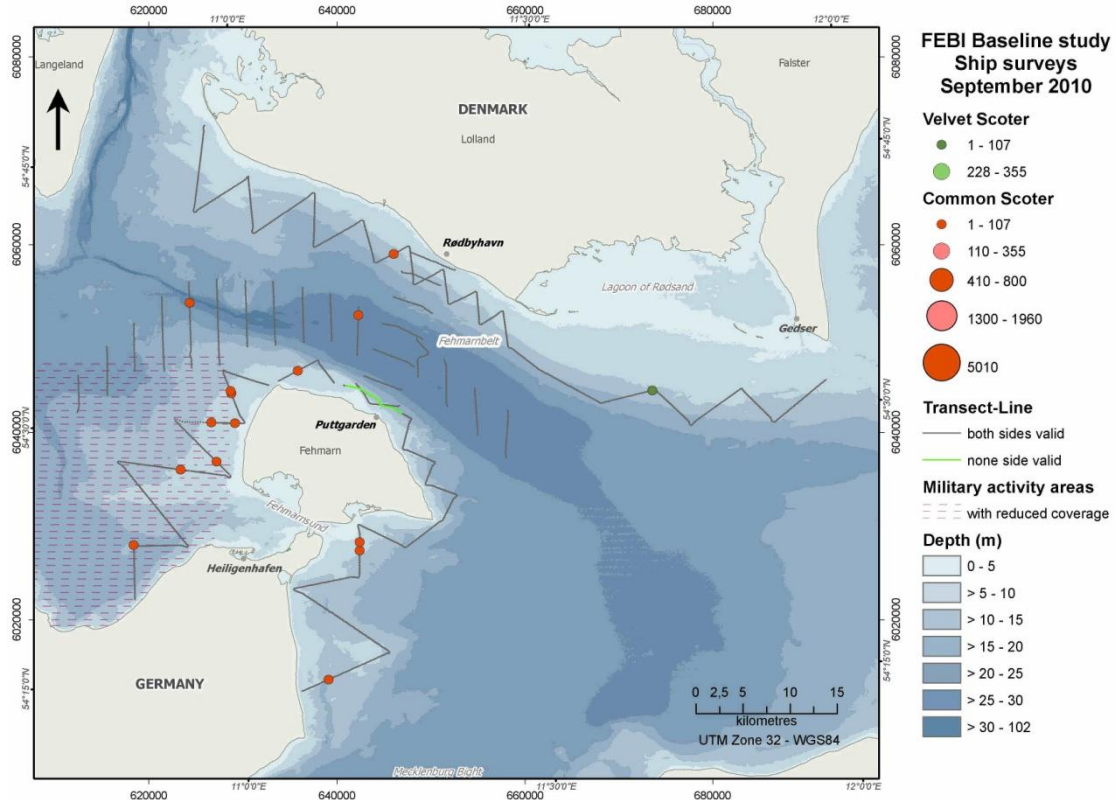


Figure 1.47 Velvet Scoter and Common Scoter distribution in the study area during ship-based surveys (September 2010).

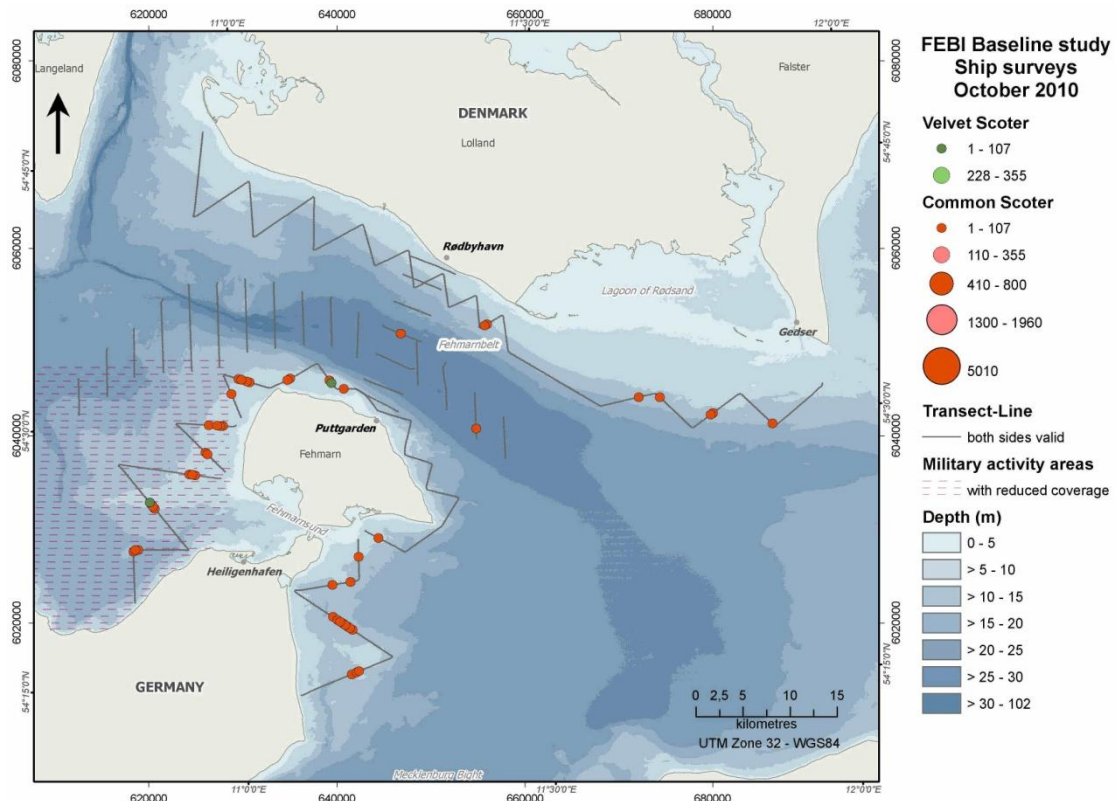


Figure 1.48 Velvet Scoter and Common Scoter distribution in the study area during ship-based surveys (October 2010).

FEHMARNBELT BIRDS

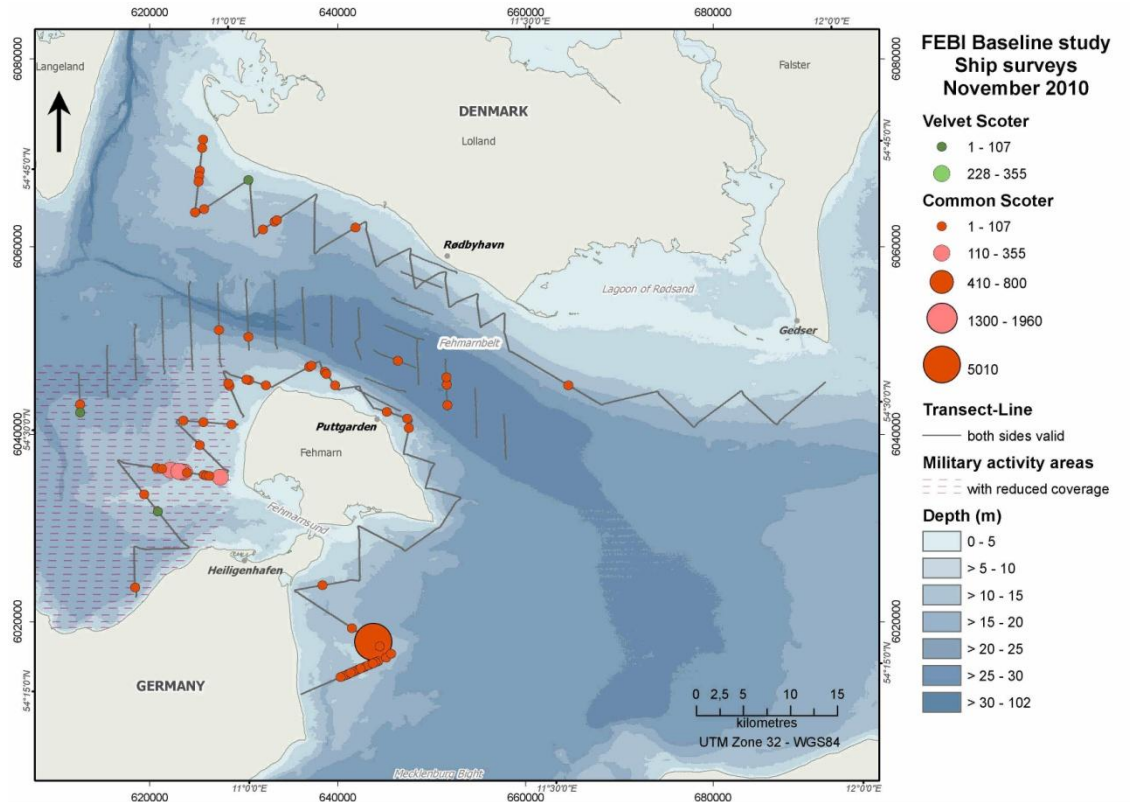


Figure 1.49 Velvet Scoter and Common Scoter distribution in the study area during ship-based surveys (November 2010).

1.1.8 Red-breasted Merganser / Goosander – *Mergus serrator* / *Mergus merganser*

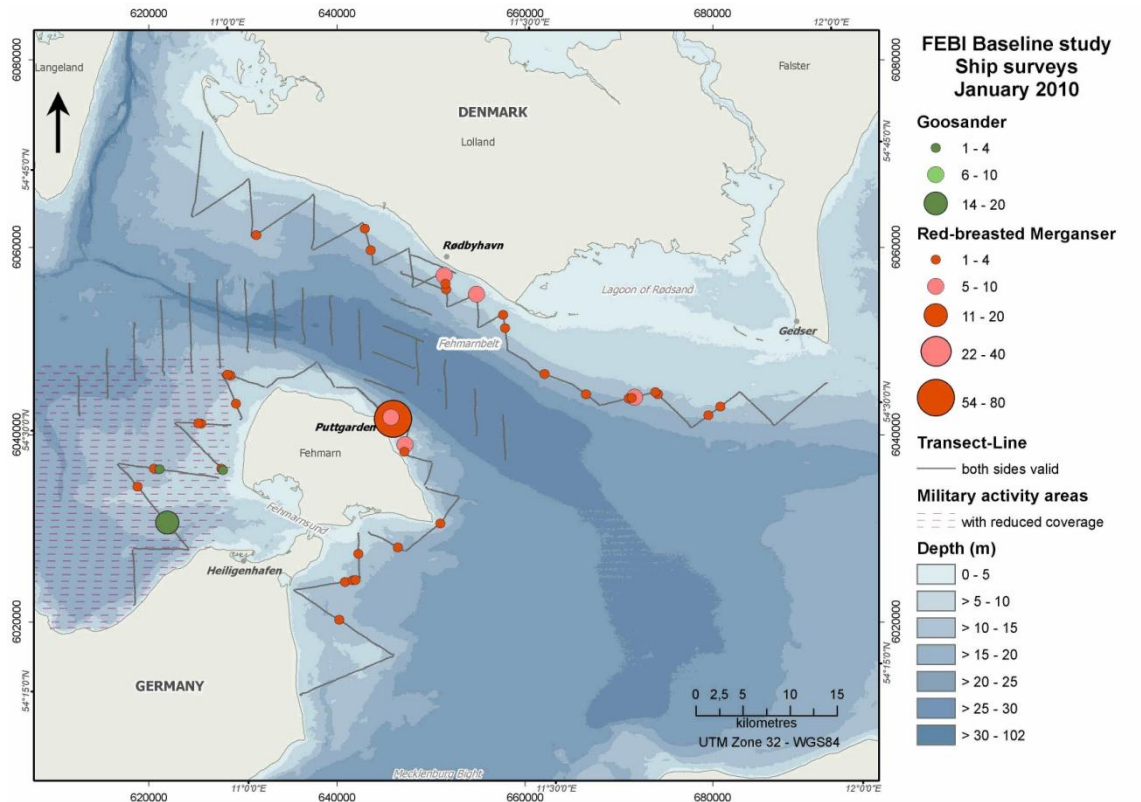


Figure 1.50 Red-breasted Merganser and Goosander distribution in the study area during ship-based surveys (January 2010).

FEHMARNBELT BIRDS

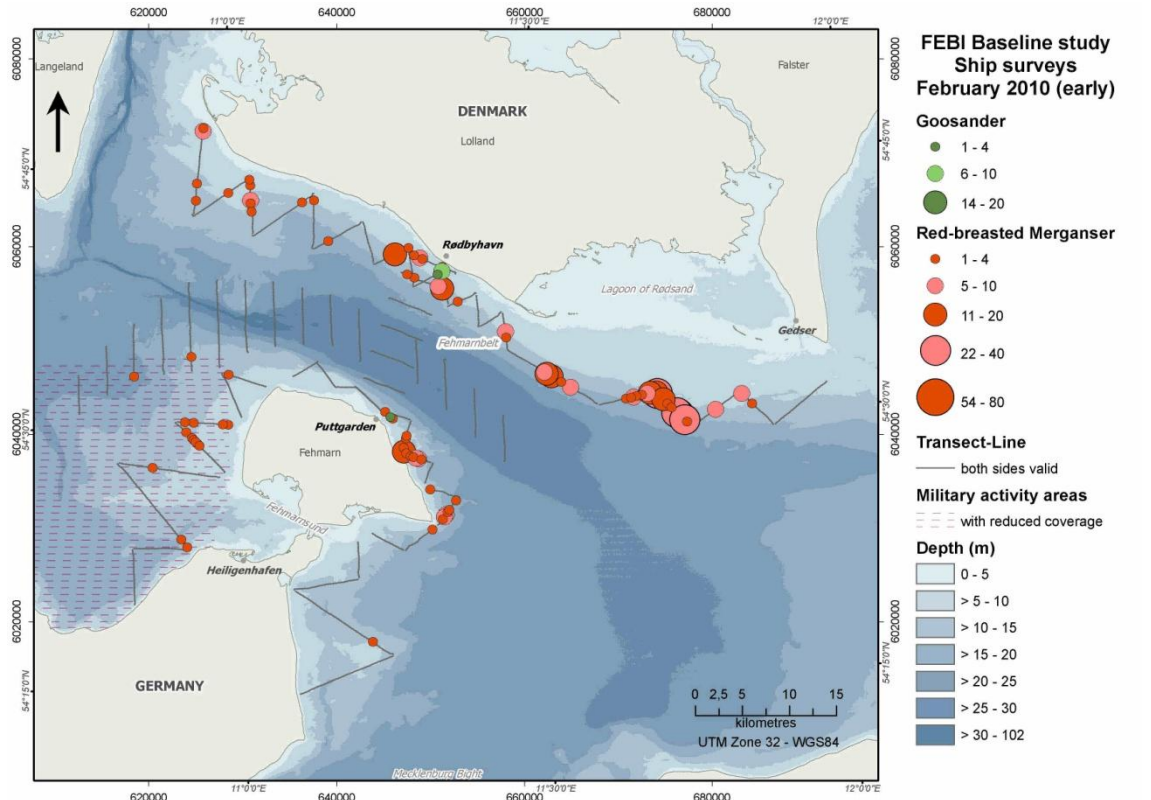


Figure 1.51 Red-breasted Merganser and Goosander distribution in the study area during ship-based surveys (February 2010).

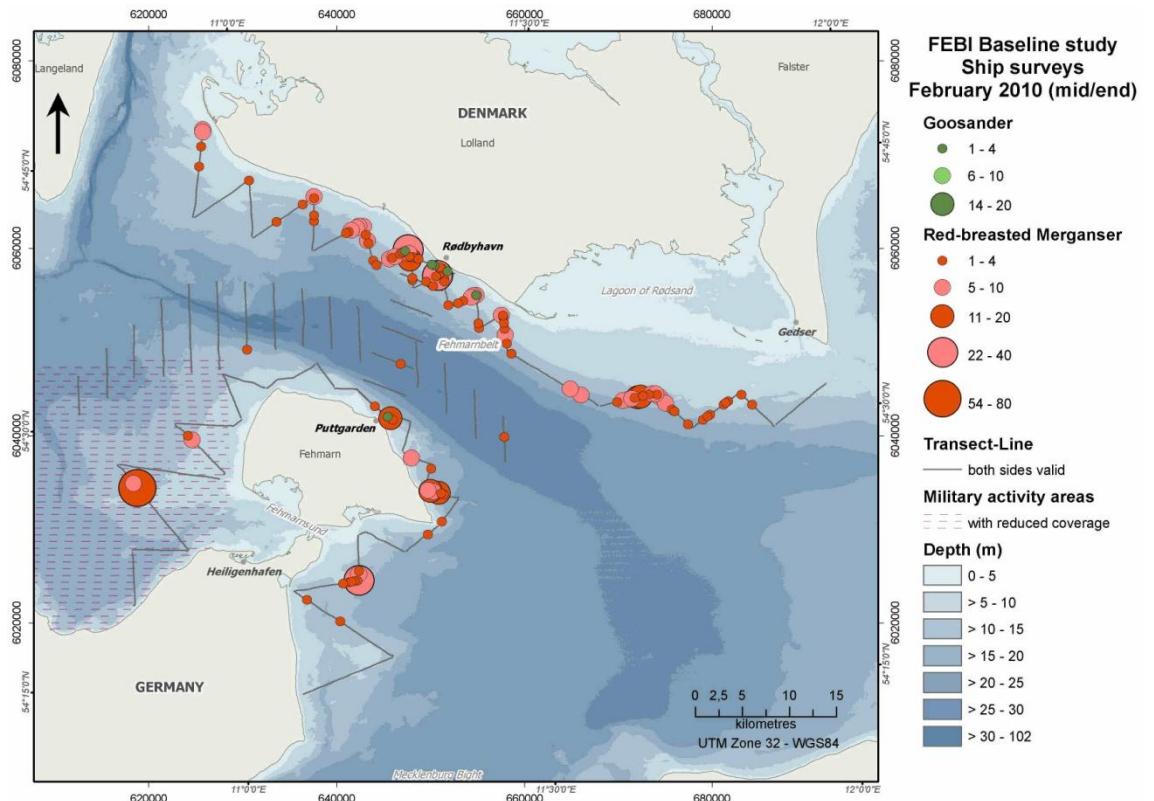


Figure 1.52 Red-breasted Merganser and Goosander distribution in the study area during ship-based surveys (February 2010).

FEHMARNBELT BIRDS

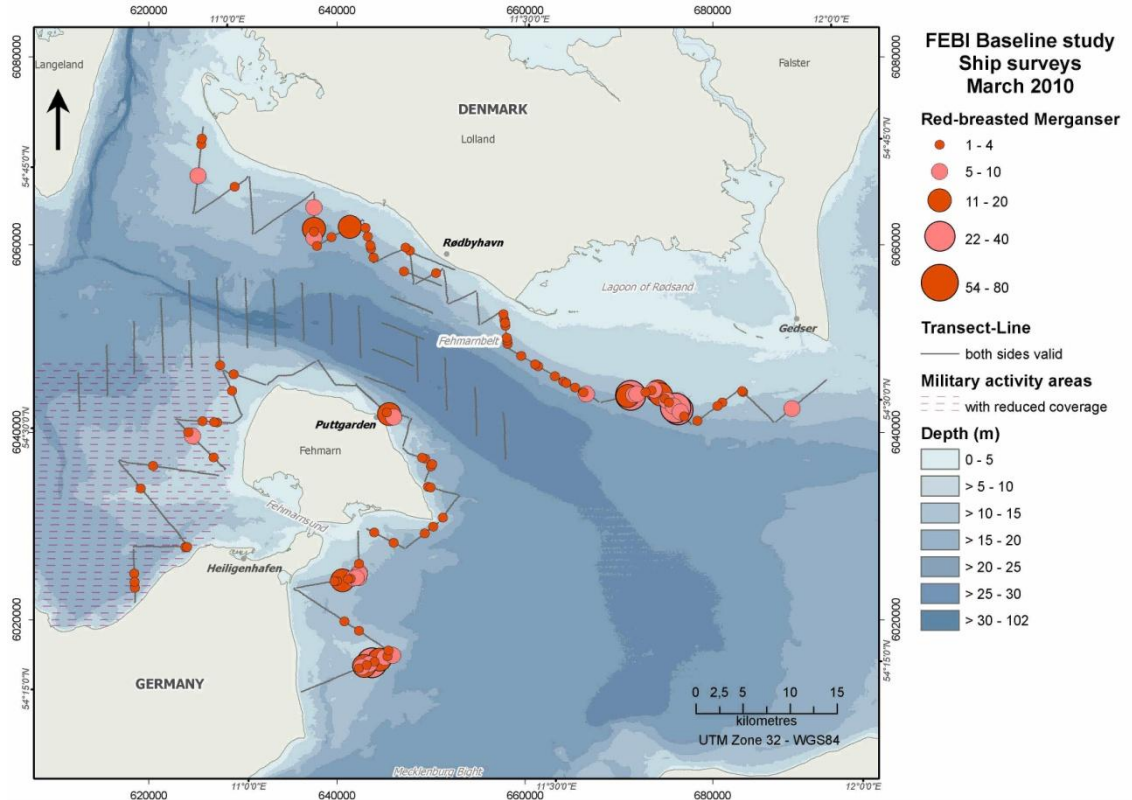


Figure 1.53 Red-breasted Merganser distribution in the study area during ship-based surveys (March 2010).

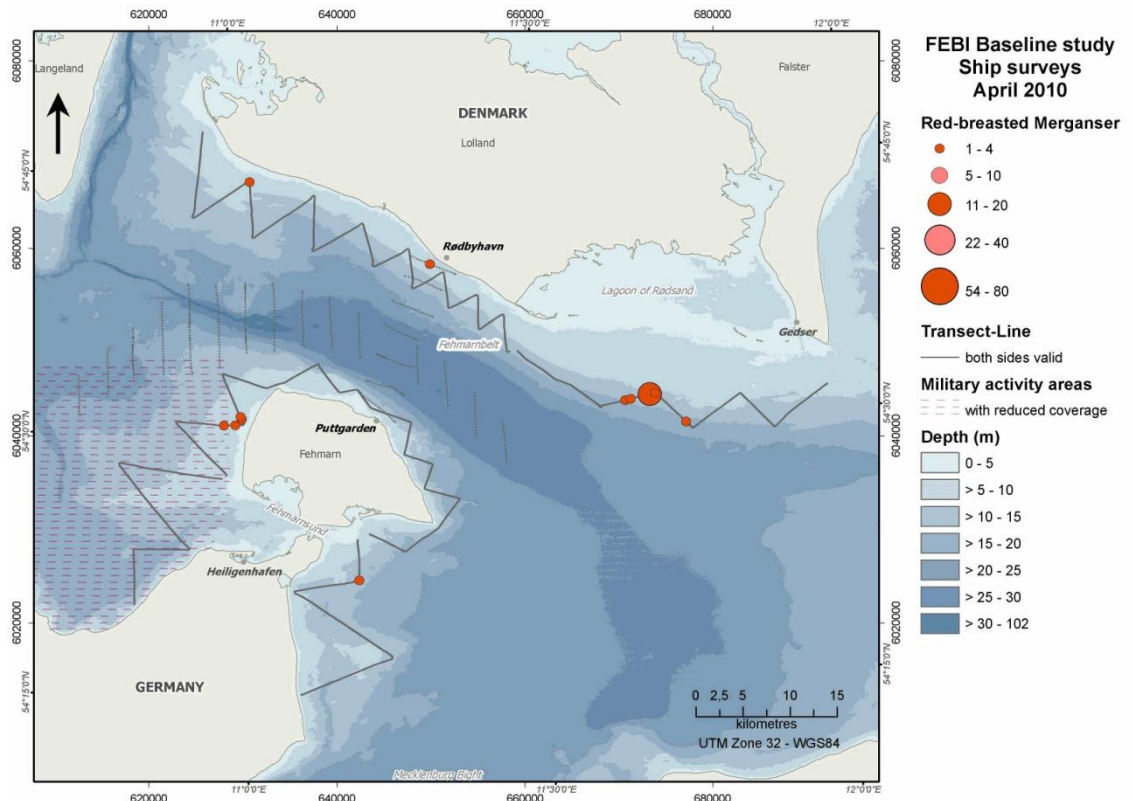


Figure 1.54 Red-breasted Merganser distribution in the study area during ship-based surveys (April 2010).

FEHMARNBELT BIRDS

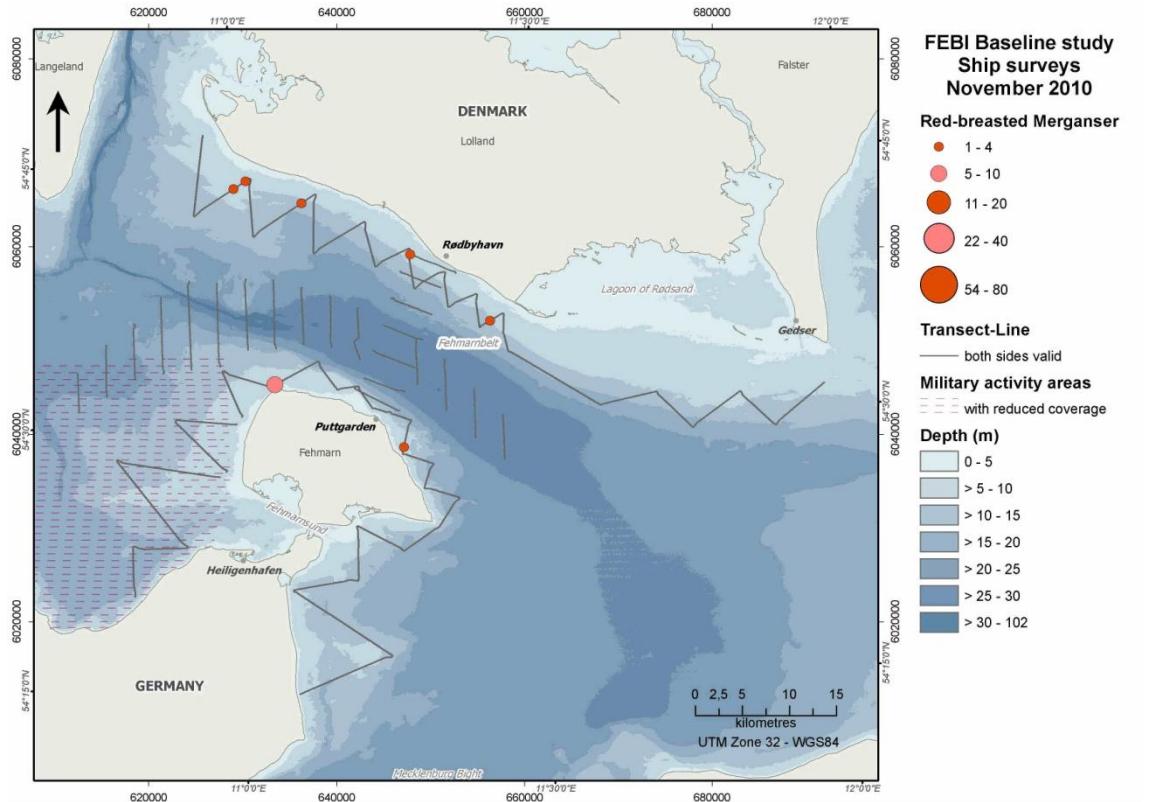


Figure 1.55 Red-breasted Merganser distribution in the study area during ship-based surveys (November 2010).

1.1.9 Black-headed Gull / Little Gull – *Larus ridibundus* / *Larus minutus*

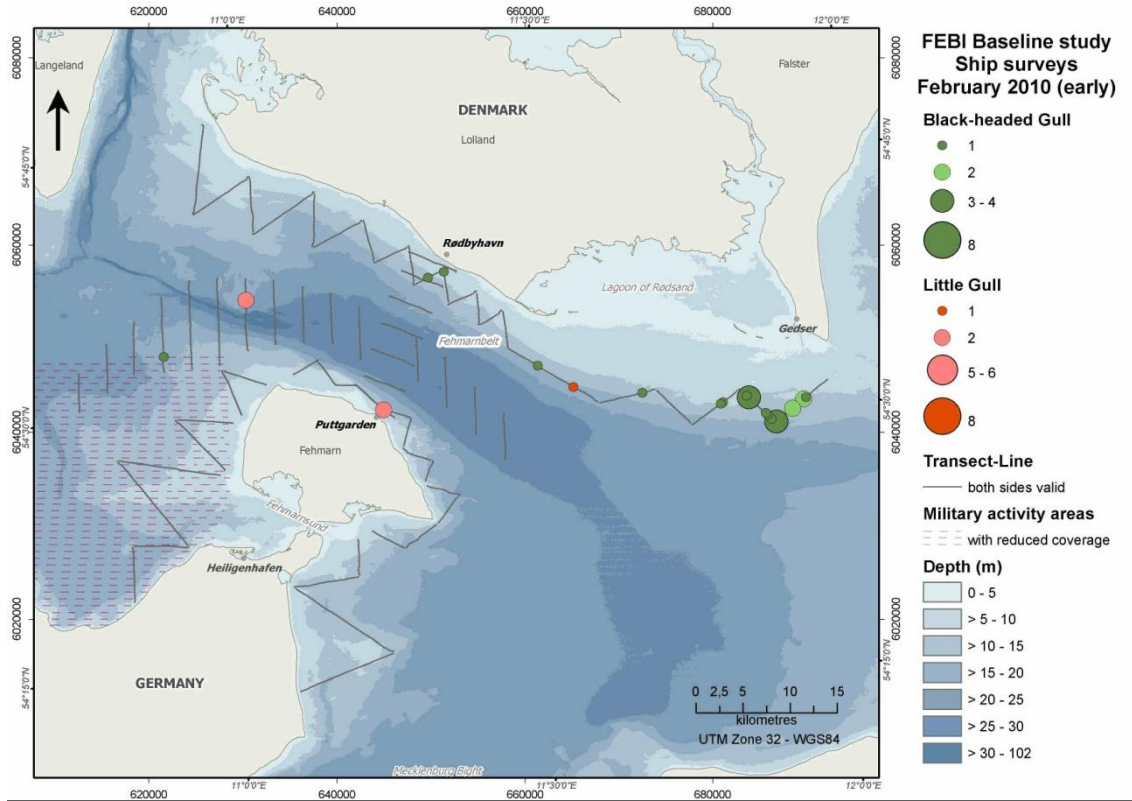


Figure 1.56 Black-headed Gull and Little Gull distribution in the study area during ship-based surveys (February 2010).

FEHMARNBELT BIRDS

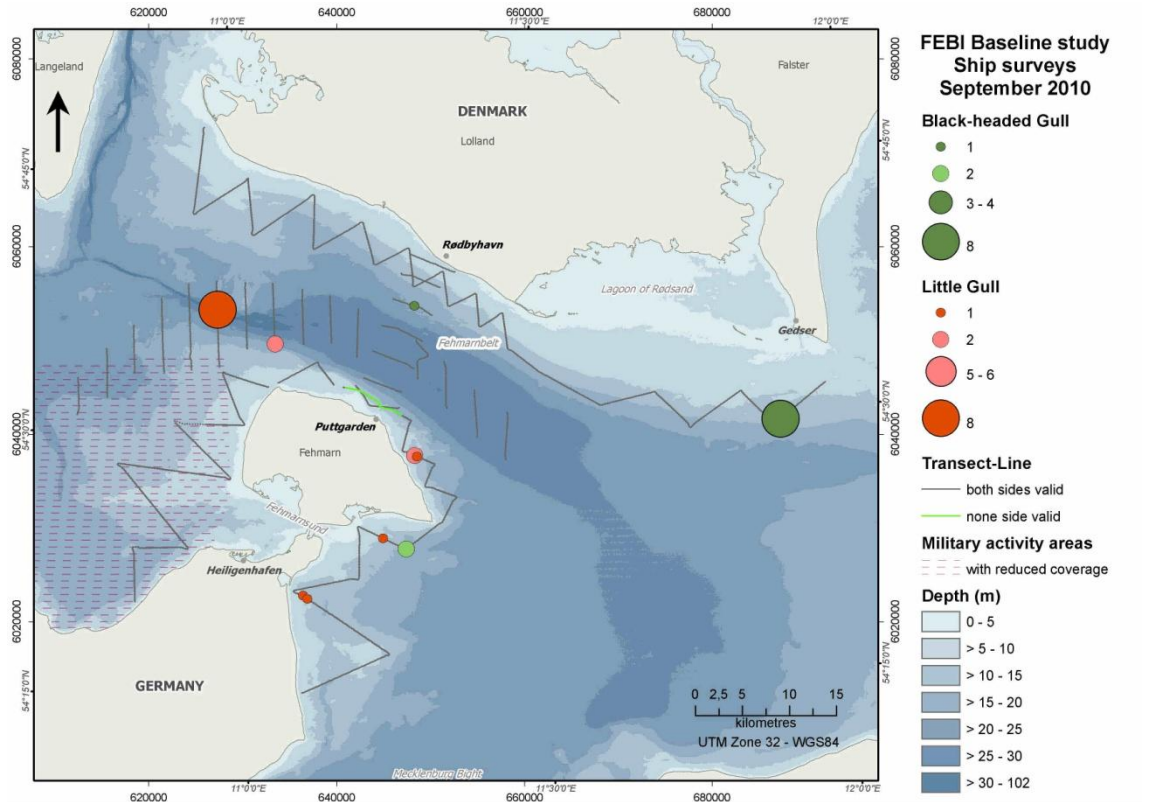


Figure 1.57 Black-headed Gull and Little Gull distribution in the study area during ship-based surveys (September 2010).

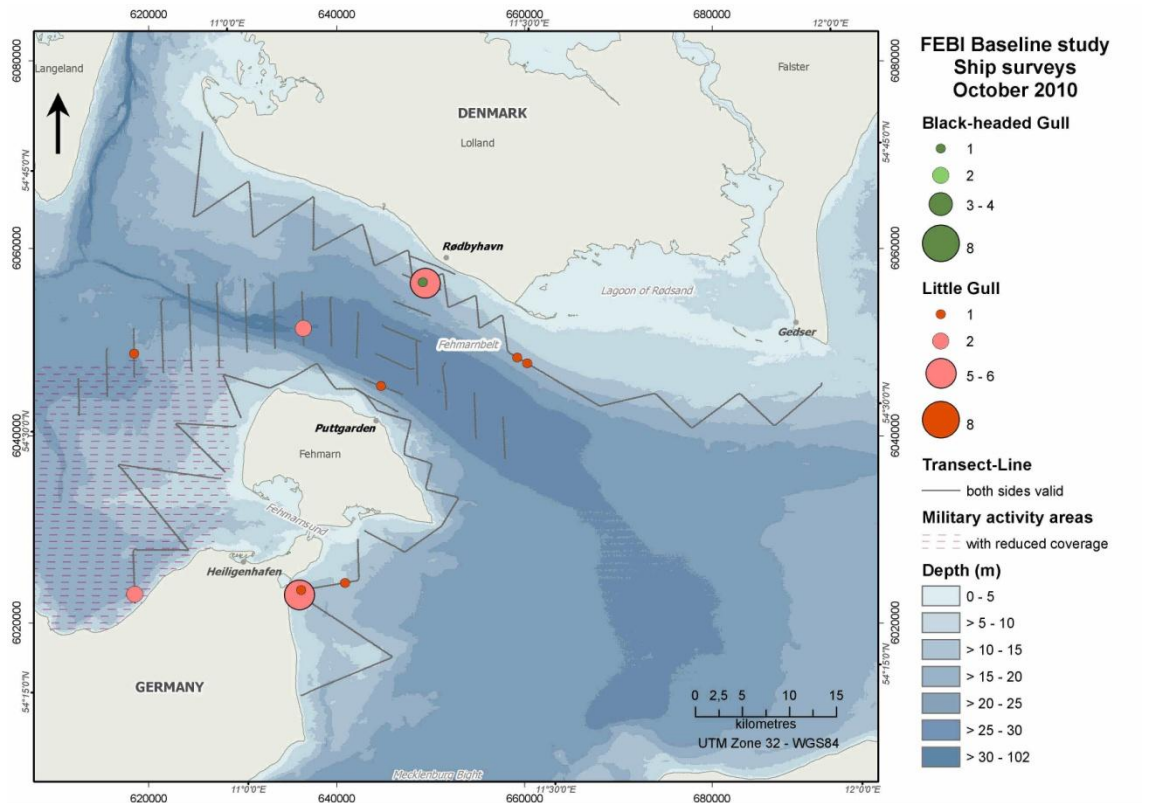


Figure 1.58 Black-headed Gull and Little Gull distribution in the study area during ship-based surveys (October 2010).

1.1.10 *Great Black-backed Gull / Common Gull / Herring Gull – Larus marinus/ Larus canus / Larus argentatus*

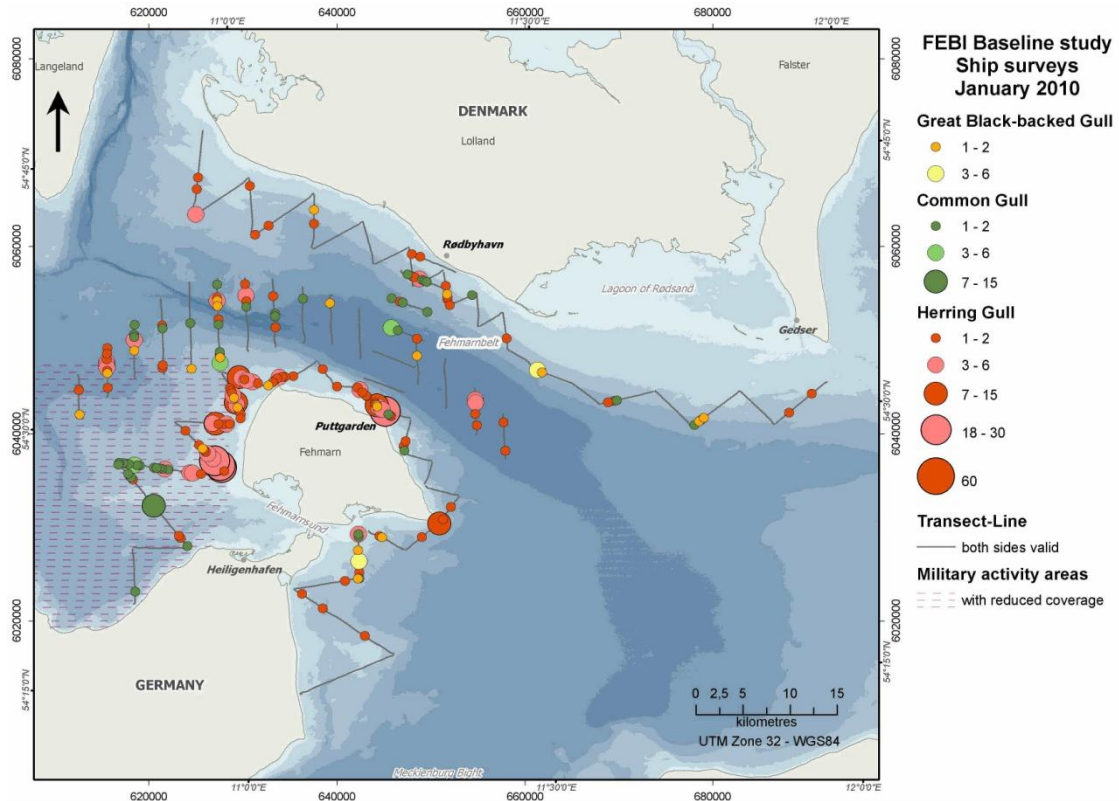


Figure 1.59 *Great Black-backed Gull, Common Gull and Herring Gull distribution in the study area during ship-based surveys (January 2010).*

FEHMARNBELT BIRDS

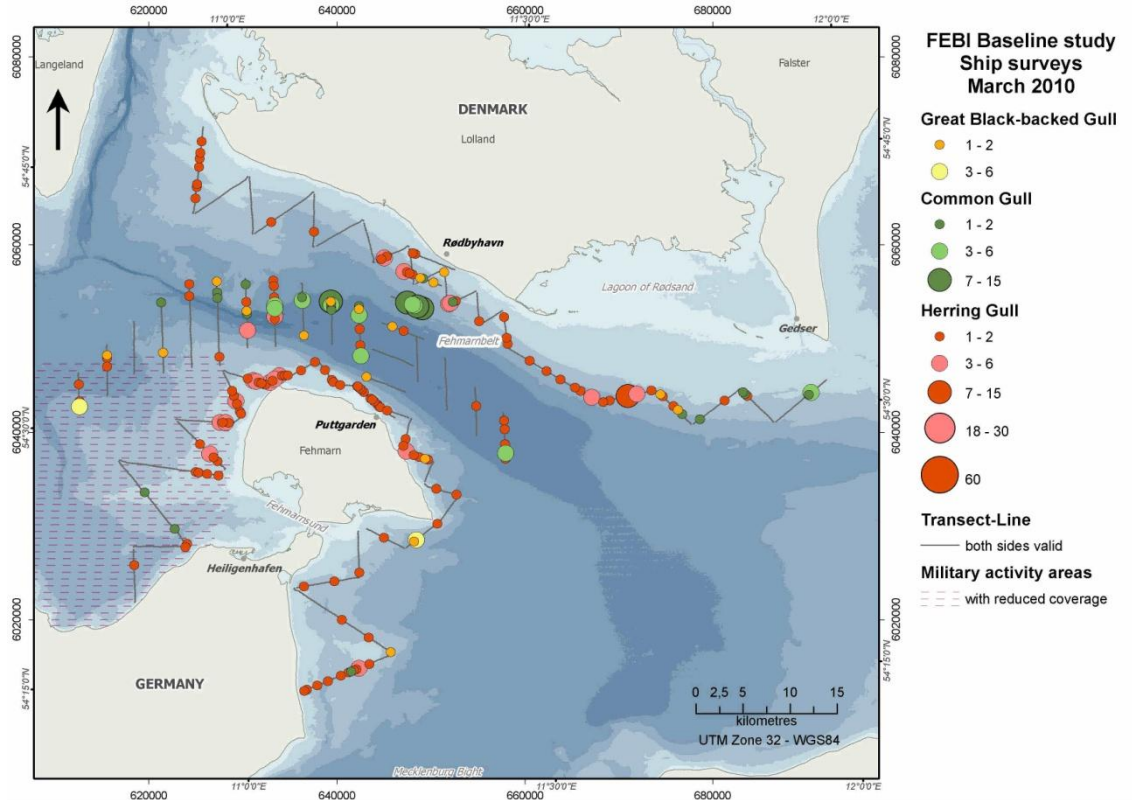


Figure 1.62 Great Black-backed Gull, Common Gull and Herring Gull distribution in the study area during ship-based surveys (March 2010).

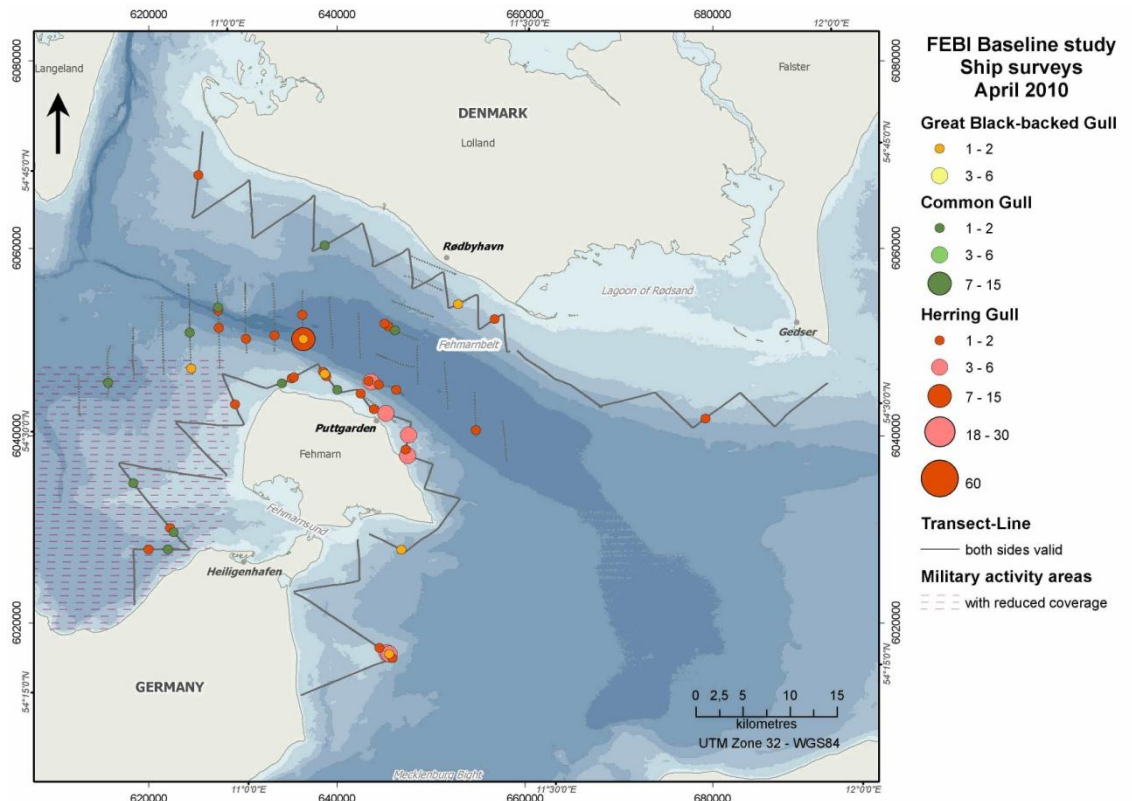


Figure 1.63 Great Black-backed Gull, Common Gull and Herring Gull distribution in the study area during ship-based surveys (April 2010).

FEHMARNBELT BIRDS

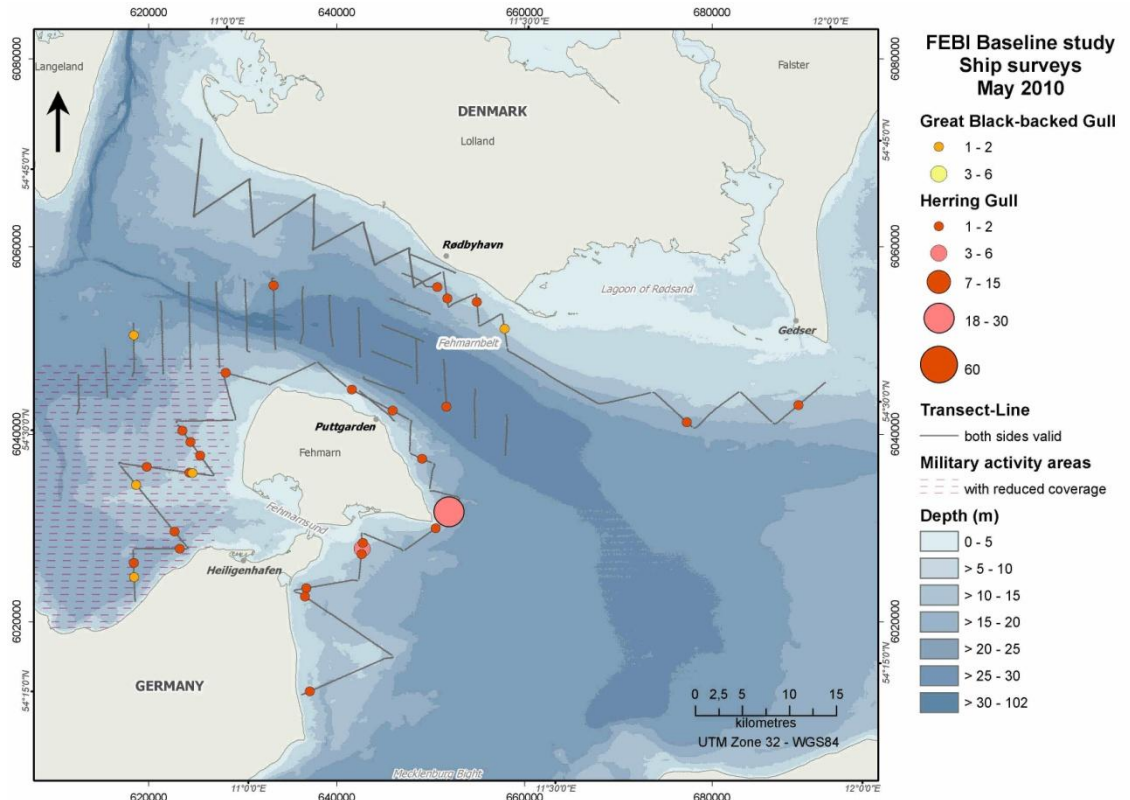


Figure 1.64 Great Black-backed Gull and Herring Gull distribution in the study area during ship-based surveys (May 2010).

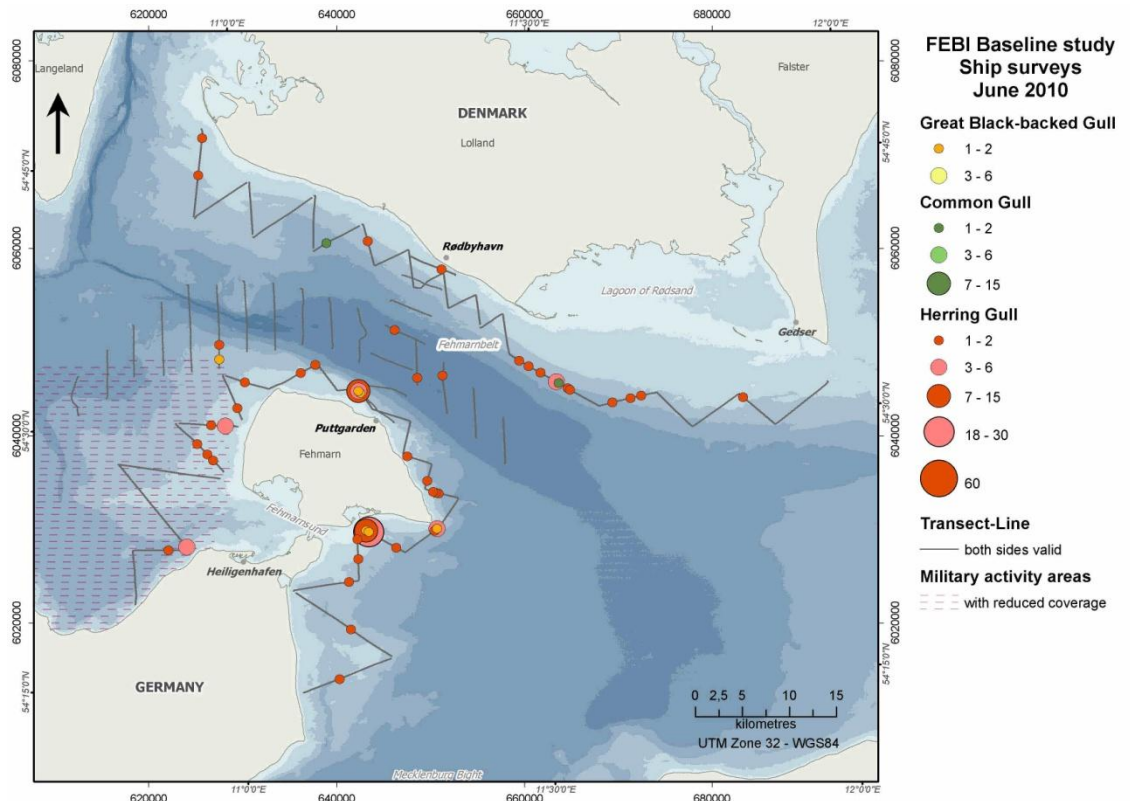


Figure 1.65 Great Black-backed Gull, Common Gull and Herring Gull distribution in the study area during ship-based surveys (June 2010).

FEHMARNBELT BIRDS

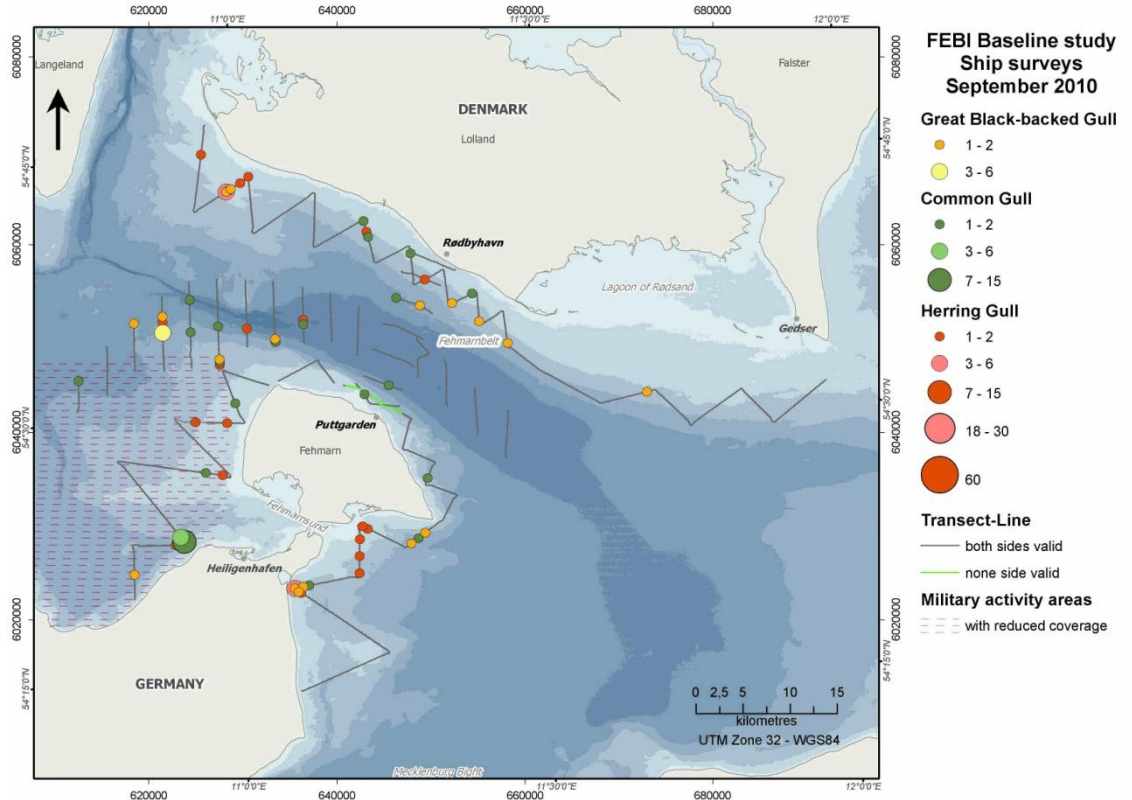


Figure 1.66 Great Black-backed Gull, Common Gull and Herring Gull distribution in the study area during ship-based surveys (September 2010).

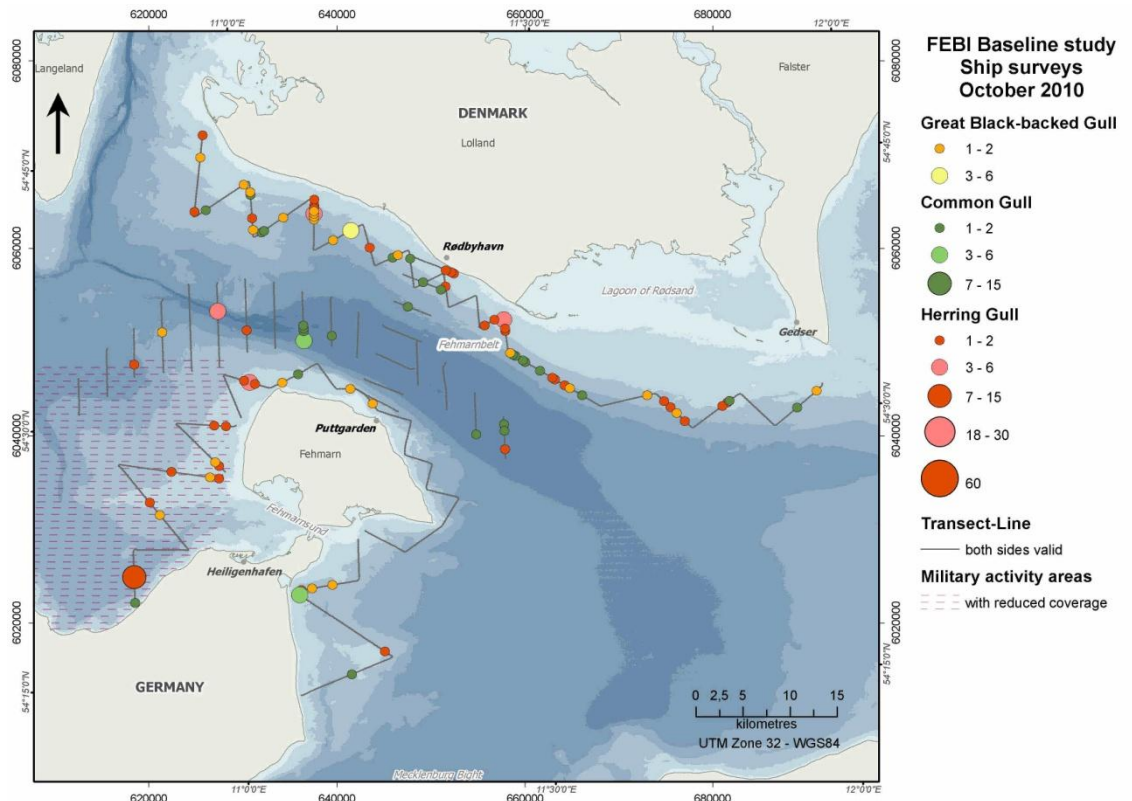


Figure 1.67 Great Black-backed Gull, Common Gull and Herring Gull distribution in the study area during ship-based surveys (October 2010).

FEHMARNBELT BIRDS

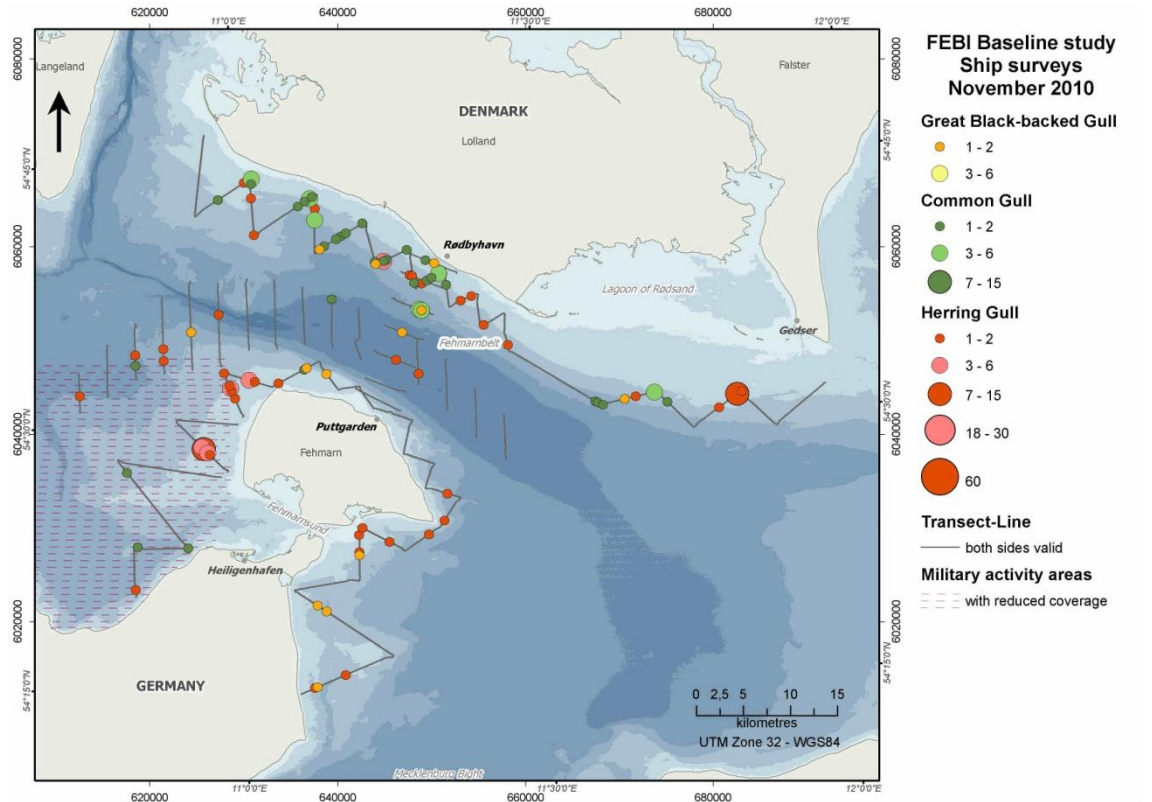


Figure 1.68 Great Black-backed Gull, Common Gull and Herring Gull distribution in the study area during ship-based surveys (November 2010).

1.1.11 Razorbill/ Black Guillemot – *Alca torda* / *Cepphus grylle*

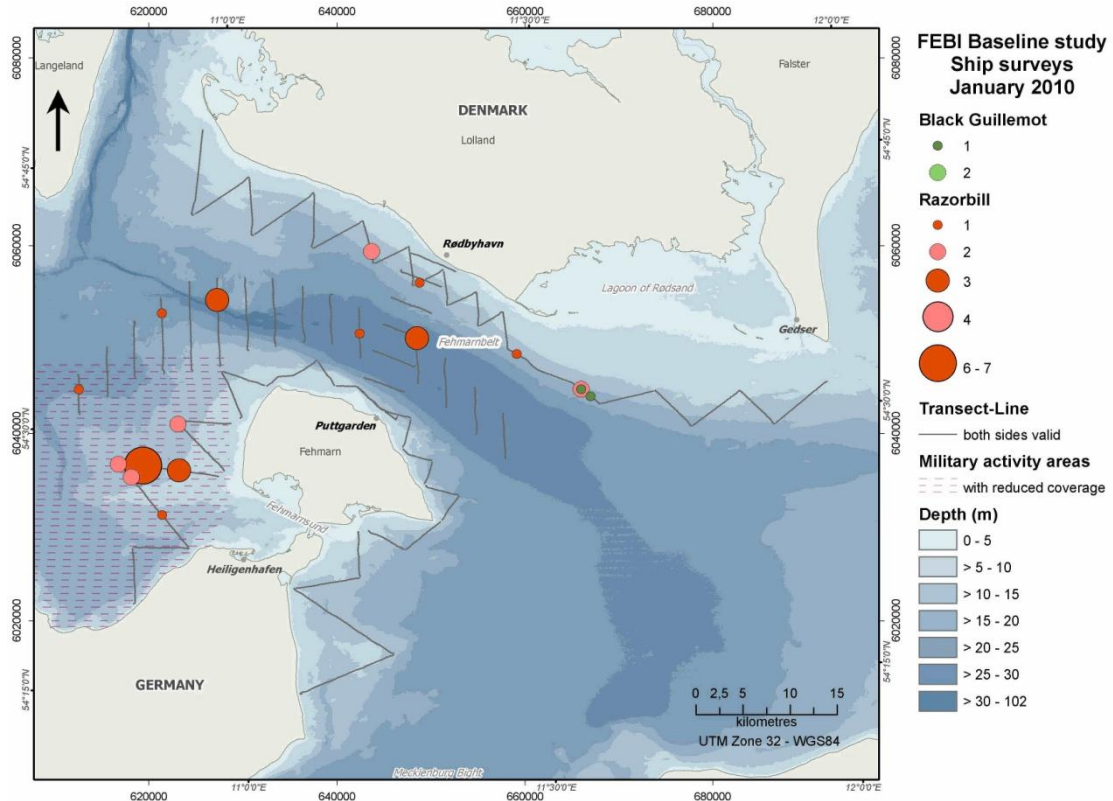


Figure 1.69 Razorbill and Black Guillemot distribution in the study area during ship-based surveys (January 2010).

FEHMARNBELT BIRDS

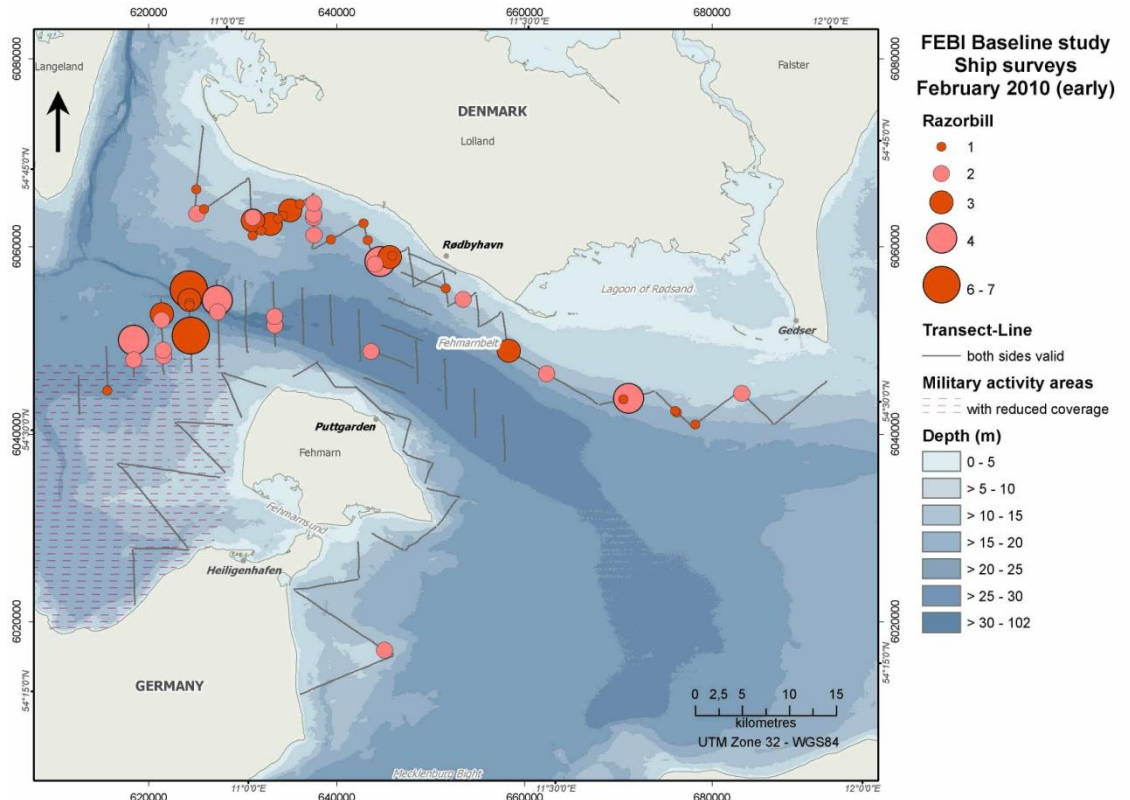


Figure 1.70 Razorbill distribution in the study area during ship-based surveys (February 2010).

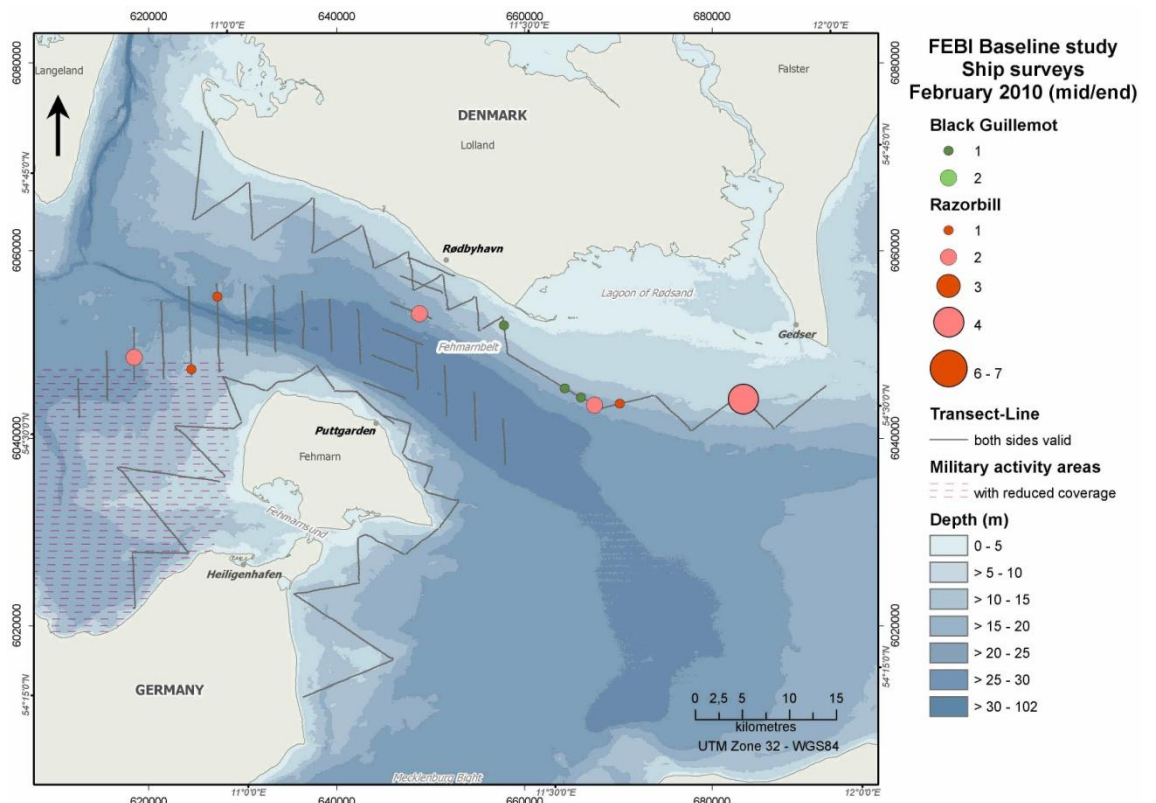


Figure 1.71 Razorbill and Black Guillemot distribution in the study area during ship-based surveys (February 2010).

FEHMARNBELT BIRDS

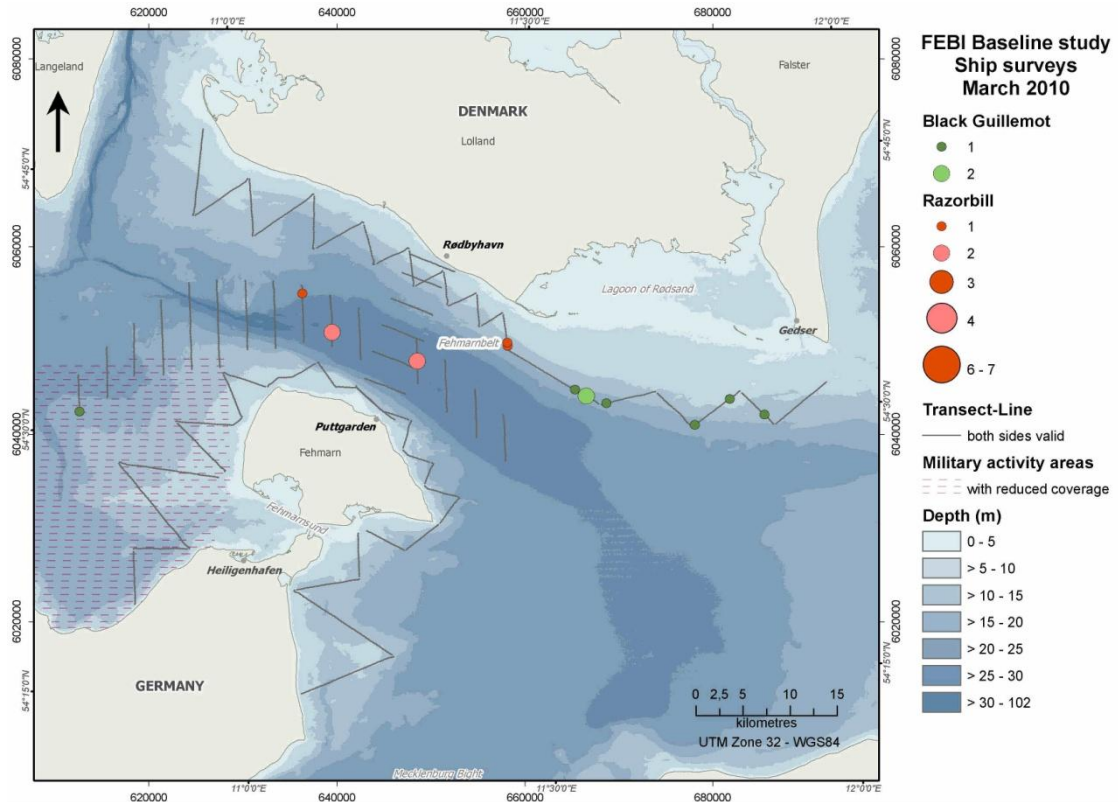


Figure 1.72 Razorbill and Black Guillemot distribution in the study area during ship-based surveys (March 2010).

List of figures

Figure 1.1	Red-throated Diver, Black-throated Diver and unidentified diver (<i>Gavia</i> sp.) distribution in the study area during ship-based surveys (January 2010).	1
Figure 1.2	Red-throated Diver and unidentified diver (<i>Gavia</i> sp.) distribution in the study area during ship-based surveys (February 2010).....	2
Figure 1.3	Red-throated Diver and unidentified diver (<i>Gavia</i> sp.) distribution in the study area during ship-based surveys (March 2010).....	2
Figure 1.4	Red-throated Diver, Black-throated Diver and unidentified diver (<i>Gavia</i> sp.) distribution in the study area during ship-based surveys (April 2010).....	3
Figure 1.5	Great Crested Grebe, Red-necked Grebe and unidentified Grebe (<i>Podiceps</i> sp.) distribution in the study area during ship-based surveys (January 2010).	4
Figure 1.6	Great Crested Grebe, Red-necked Grebe and unidentified Grebe (<i>Podiceps</i> sp.) distribution in the study area during ship-based surveys (February 2010).....	5
Figure 1.7	Great Crested Grebe, Red-necked Grebe and unidentified Grebe (<i>Podiceps</i> sp.) distribution in the study area during ship-based surveys (February 2010).....	5
Figure 1.8	Great Crested Grebe, Red-necked Grebe and unidentified Grebe (<i>Podiceps</i> sp.) distribution in the study area during ship-based surveys (March 2010).....	6
Figure 1.9	Great Crested Grebe, Red-necked Grebe and unidentified Grebe (<i>Podiceps</i> sp.) distribution in the study area during ship-based surveys (April 2010).	6
Figure 1.10	Great Crested Grebe, Red-necked Grebe and unidentified Grebe (<i>Podiceps</i> sp.) distribution in the study area during ship-based surveys (October 2010).	7
Figure 1.11	Great Crested Grebe and unidentified Grebe (<i>Podiceps</i> sp.) distribution in the study area during ship-based surveys (November 2010).	7
Figure 1.12	Great Cormorant distribution in the study area during ship-based surveys (January 2010).....	8
Figure 1.13	Great Cormorant distribution in the study area during ship-based surveys (February 2010).	9
Figure 1.14	Great Cormorant distribution in the study area during ship-based surveys (February 2010).	9
Figure 1.15	Great Cormorant distribution in the study area during ship-based surveys (March 2010).....	10
Figure 1.16	Great Cormorant distribution in the study area during ship-based surveys (April 2010).	10
Figure 1.17	Great Cormorant distribution in the study area during ship-based surveys (May 2010).....	11
Figure 1.18	Great Cormorant distribution in the study area during ship-based surveys (June 2010).....	11
Figure 1.19	Great Cormorant distribution in the study area during ship-based surveys (September 2010).	12
Figure 1.20	Great Cormorant distribution in the study area during ship-based surveys (October 2010).....	12
Figure 1.21	Great Cormorant distribution in the study area during ship-based surveys (November 2010).	13
Figure 1.22	Common Goldeneye, Greater Scaup and Tufted Duck distribution in the study area during ship-based surveys (January 2010).....	14
Figure 1.23	Common Goldeneye, Greater Scaup and Tufted Duck distribution in the study area during ship-based surveys (February 2010).	15

FEHMARNBELT BIRDS

Figure 1.24	Common Goldeneye, Greater Scaup and Tufted Duck distribution in the study area during ship-based surveys (February 2010).	15
Figure 1.25	Common Goldeneye and Greater Scaup distribution in the study area during ship-based surveys (March 2010).....	16
Figure 1.26	Common Goldeneye and Greater Scaup distribution in the study area during ship-based surveys (November 2010).	16
Figure 1.27	Common Eider distribution in the study area during ship-based surveys (January 2010).....	17
Figure 1.28	Common Eider distribution in the study area during ship-based surveys (February 2010).	17
Figure 1.29	Common Eider distribution in the study area during ship-based surveys (February 2010).	18
Figure 1.30	Common Eider distribution in the study area during ship-based surveys (March 2010).....	18
Figure 1.31	Common Eider distribution in the study area during ship-based surveys (April 2010).	19
Figure 1.32	Common Eider distribution in the study area during ship-based surveys (June 2010).....	19
Figure 1.33	Common Eider distribution in the study area during ship-based surveys (September 2010).	20
Figure 1.34	Common Eider distribution in the study area during ship-based surveys (October 2010).....	20
Figure 1.35	Common Eider distribution in the study area during ship-based surveys (November 2010).	21
Figure 1.36	Long-tailed Duck distribution in the study area during ship-based surveys (January 2010).....	22
Figure 1.37	Long-tailed Duck distribution in the study area during ship-based surveys (February 2010).	22
Figure 1.38	Long-tailed Duck distribution in the study area during ship-based surveys (February 2010).	23
Figure 1.39	Long-tailed Duck distribution in the study area during ship-based surveys (March 2010).....	23
Figure 1.40	Long-tailed Duck distribution in the study area during ship-based surveys (April 2010).	24
Figure 1.41	Long-tailed Duck distribution in the study area during ship-based surveys (November 2010).	24
Figure 1.42	Velvet Scoter and Common Scoter distribution in the study area during ship-based surveys (January 2010).	25
Figure 1.43	Velvet Scoter and Common Scoter distribution in the study area during ship-based surveys (February 2010).	26
Figure 1.44	Velvet Scoter and Common Scoter distribution in the study area during ship-based surveys (February 2010).	26
Figure 1.45	Velvet Scoter and Common Scoter distribution in the study area during ship-based surveys (March 2010).	27
Figure 1.46	Velvet Scoter and Common Scoter distribution in the study area during ship-based surveys (April 2010).	27
Figure 1.47	Velvet Scoter and Common Scoter distribution in the study area during ship-based surveys (September 2010).	28
Figure 1.48	Velvet Scoter and Common Scoter distribution in the study area during ship-based surveys (October 2010).	28

FEHMARNBELT BIRDS

Figure 1.49	Velvet Scoter and Common Scoter distribution in the study area during ship-based surveys (November 2010).	29
Figure 1.50	Red-breasted Merganser and Goosander distribution in the study area during ship-based surveys (January 2010).	30
Figure 1.51	Red-breasted Merganser and Goosander distribution in the study area during ship-based surveys (February 2010).	31
Figure 1.52	Red-breasted Merganser and Goosander distribution in the study area during ship-based surveys (February 2010).	31
Figure 1.53	Red-breasted Merganser distribution in the study area during ship-based surveys (March 2010). ...	32
Figure 1.54	Red-breasted Merganser distribution in the study area during ship-based surveys (April 2010).	32
Figure 1.55	Red-breasted Merganser distribution in the study area during ship-based surveys (November 2010).	33
Figure 1.56	Black-headed Gull and Little Gull distribution in the study area during ship-based surveys (February 2010).	34
Figure 1.57	Black-headed Gull and Little Gull distribution in the study area during ship-based surveys (September 2010).	35
Figure 1.58	Black-headed Gull and Little Gull distribution in the study area during ship-based surveys (October 2010).	35
Figure 1.59	Great Black-backed Gull, Common Gull and Herring Gull distribution in the study area during ship-based surveys (January 2010).	36
Figure 1.60	Great Black-backed Gull, Common Gull and Herring Gull distribution in the study area during ship-based surveys (February 2010).	37
Figure 1.61	Great Black-backed Gull, Common Gull and Herring Gull distribution in the study area during ship-based surveys (February 2010).	37
Figure 1.62	Great Black-backed Gull, Common Gull and Herring Gull distribution in the study area during ship-based surveys (March 2010).	38
Figure 1.63	Great Black-backed Gull, Common Gull and Herring Gull distribution in the study area during ship-based surveys (April 2010).	38
Figure 1.64	Great Black-backed Gull and Herring Gull distribution in the study area during ship-based surveys (May 2010).	39
Figure 1.65	Great Black-backed Gull, Common Gull and Herring Gull distribution in the study area during ship-based surveys (June 2010).	39
Figure 1.66	Great Black-backed Gull, Common Gull and Herring Gull distribution in the study area during ship-based surveys (September 2010).	40
Figure 1.67	Great Black-backed Gull, Common Gull and Herring Gull distribution in the study area during ship-based surveys (October 2010).	40
Figure 1.68	Great Black-backed Gull, Common Gull and Herring Gull distribution in the study area during ship-based surveys (November 2010).	41

FEHMARNBELT BIRDS

Figure 1.69	Razorbill and Black Guillemot distribution in the study area during ship-based surveys (January 2010).....	42
Figure 1.70	Razorbill distribution in the study area during ship-based surveys (February 2010).....	43
Figure 1.71	Razorbill and Black Guillemot distribution in the study area during ship-based surveys (February 2010).....	43
Figure 1.72	Razorbill and Black Guillemot distribution in the study area during ship-based surveys (March 2010).	44